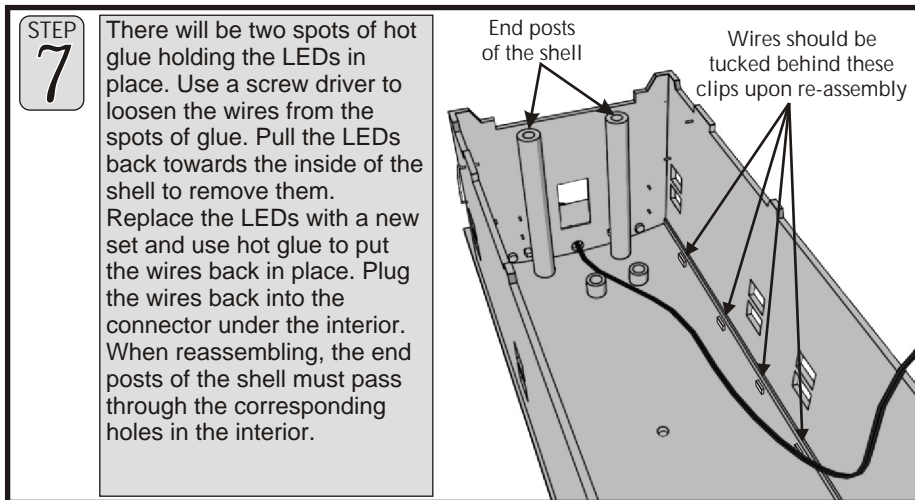


STEP
6

Unplug the red LED's from underneath the interior.



STEP
7

There will be two spots of hot glue holding the LEDs in place. Use a screw driver to loosen the wires from the spots of glue. Pull the LEDs back towards the inside of the shell to remove them. Replace the LEDs with a new set and use hot glue to put the wires back in place. Plug the wires back into the connector under the interior. When reassembling, the end posts of the shell must pass through the corresponding holes in the interior.

End posts of the shell
Wires should be tucked behind these clips upon re-assembly

LIMITED ONE YEAR WARRANTY

This item is warranted for one year from the date of purchase against defects in material or workmanship. We will repair or replace (at our option) the defective part without charge for parts or labor, if the item is returned to the address below within one year of the original date of purchase. This warranty does not cover items that have been abused or damaged by careless handling. Transportation costs incurred by the customer are not covered under this warranty.

This warranty gives you specific legal rights and you may have other rights which vary from state to state.

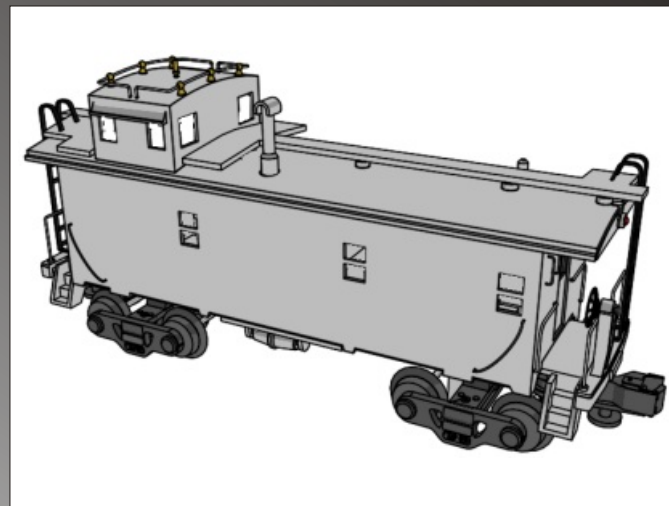
M.T.H. Electric Trains, Inc. • 7020 Columbia Gateway Drive • Columbia, MD 21046-1532



M.T.H.

ELECTRIC TRAINS, INC.

7020 Columbia Gateway Drive
Columbia, MD 21046-1532



The Premier Steel Caboose offers a new level of excitement and realism for your O Gauge model railroad. Constructed from sturdy ABS plastic, the Steel Caboose was created from quality components and has been designed for years of operation.

The Premier Steel Caboose comes fully assembled, decorated and ready for use right out of the box. The Steel Caboose features an illuminated interior and exterior marker lights, controlled from track power. Use and operation is made easy by following the instructions on the following pages.

Steel Caboose

INSTRUCTIONS

To replace the interior light bulbs, follow these steps. **1** To remove the shell from the chassis, remove the four mounting screws located underneath the trucks. **2** With the four screws removed, lower the chassis from the shell, take care not to pull the wires out. **3** To be able to separate the interior from the shell you need to remove the step platform from both ends. In order to do this you need to loosen the Ladder from the Catwalk. You must do this carefully so that you don't scratch the

paint on the roof of the caboose. First remove the ladder from the Catwalk by pulling the ladder upward and outward. You can then remove the step platforms.

4 With the step platforms removed you can then lower the interior from the shell (to completely remove the body from the interior, go to Step 6 which is found on the back page). **5** You can now replace the bulbs by pushing the socket up from the bulb holder and pull the bulb from its socket. Replace the middle bulb simply by pulling it from its socket. Replace with a new one, and reverse the steps to reassemble the caboose. To replace the two red LED lights at the end of the caboose follow steps 1- 4, above and below, and 6-7 on the back page.

