



HO TRAINS THAT DO MORE

WWW.MTHHOTRAINS.COM

80-2157-1/0/5 80-2180-1/0/5

80-2158-1/0/5

80-2159-1/0/5

80-2160-1/0/5

80-2161-1/0/5

80-2162-1/0

80-2163-1/0/5

80-2164-1/0

80-2165-1/0/5

80-2166-1/0

80-2167-1/0/5

80-2168-1/0

80-2169-1/0/5

80-2170-1/0/5

80-2171-1/0

80-2172-1/0/5

80-2173-1/0/5

80-2174-1/0/5

80-2175-1/0/5

80-2176-1/0/5

80-2177-1/0/5

80-2178-1/0/5

80-2179-1/0/5

HO ENGINE GP-35 (DC/AC/DCC) A & B UNIT (07/12/12)

For current price and availability
go to www.mthtrains.com
select *SERVICE* then *PARTS*.



HO TRAINS THAT DO MORE

1 HO B&O GP-35	80-2157,2158,2159-1/0/5
BODY LIST - P.3	CHASSIS LIST - P.15~16
BODY EXPLODED VIEW - P.11	CHASSIS EXPLODED VIEW - P.31
2 HO PRR GP-35	80-2160,2161,2162-1/0/5
BODY LIST - P.4	CHASSIS LIST - P.17~18
BODY EXPLODED VIEW - P.11	CHASSIS EXPLODED VIEW - P.32
3 HO EL GP-35	80-2169,2170,2171-1/0/5
BODY LIST - P.5	CHASSIS LIST - P.21~22
BODY EXPLODED VIEW - P.12	CHASSIS EXPLODED VIEW - P.34
4 HO N&W GP-35	80-,2166,2167,2168-1/0/5
BODY LIST - P.6	CHASSIS LIST - P.23~24
BODY EXPLODED VIEW - P.12	CHASSIS EXPLODED VIEW - P.35
5 HO NYC GP-35	80-2163,2164,2165-1/0/5
BODY LIST - P.7	CHASSIS LIST - P.19~20
BODY EXPLODED VIEW - P.13	CHASSIS EXPLODED VIEW - P.33
6 HO UP GP-35	80-2172,2173,2174-1/0/5
BODY LIST - P.8	CHASSIS LIST - P.25~26
BODY EXPLODED VIEW - P.13	CHASSIS EXPLODED VIEW - P.36
7 HO SP GP-35	80-2175,2176,2177-1/0/5
BODY LIST - P.9	CHASSIS LIST - P.27~28
BODY EXPLODED VIEW - P.14	CHASSIS EXPLODED VIEW - P.37
8 HO SANTA FE GP-35	80-2178,2179,2180-1/0/5
BODY LIST - P.10	CHASSIS LIST - P.29~30
BODY EXPLODED VIEW - P.14	CHASSIS EXPLODED VIEW - P.38

***If you need assistance at any time email MTH Service at service@mth-railking.com or call 410 381-2580 ◦*

GP-35 BODY LIST (B&O)

No.	Part No.	Description	Version
1	FC-2663005020	SUN SHADE 2	DC/AC/DCC
2			DC/AC/DCC
3	FC-2603005163	CAB (#3541)	DC/AC/DCC
	FC-2603005164	CAB (#3544)	DC/AC/DCC
	FC-2603005165	CAB (#3555)	DC/AC/DCC
	FC-2603005187	COMPLETE ASSY CAB (#3541)	DC/AC/DCC
	FC-2603005188	COMPLETE ASSY CAB (#3544)	DC/AC/DCC
	FC-2603005189	COMPLETE ASSY CAB (#3555)	DC/AC/DCC
4	FC-2643005009	WIPER (REAR)	DC/AC/DCC
5	FG-2673005010	STEP B (CAB) (RIGHT)	DC/AC/DCC
6	FG-2673005018	STEP C (CAB) (RIGHT)	DC/AC/DCC
7	FC-2603005241	DEFLECTORS MIRROR A	DC/AC/DCC
8	AG-2603001008	TOP LIGHT PCB (CAB) (NO FLASH)	DC/AC/DCC
9	FA-2623005001	WINDOW GLASS (SIDE) (LEFT)	DC/AC/DCC
10	FC-2603005235	VENT GRID A (VENT)	DC/AC/DCC
11	FC-2603005228	RING LIFT	DC/AC/DCC
12	FC-2603005062	STACK COVER	DC/AC/DCC
13	FC-2603005244	GRID A (FAN)	DC/AC/DCC
	BD-2603005008	COMPLETE ASSY VENT (BODY)	DC/AC/DCC
14	BD-2603005014	FAN B (DYNAMIC BRAKES)	DC/AC/DCC
	BD-2603005016	COMPLETE ASSY DYNAMINC BRAKES	DC/AC/DCC
15	FC-2603005208	DYNAMIC BRAKES	DC/AC/DCC
16	BD-2603005006	FAN A (BODY)	DC/AC/DCC
17	FC-2603005048	FAN BASE (FLAT)	DC/AC/DCC
	BD-2603005023	COMPLETE ASSY VENT (FLAT)	DC/AC/DCC
18	FC-2613005018	VENT GRID (RIGHT) (BODY)	DC/AC/DCC
19	BD-2603005021	FAN C(FLAT)	DC/AC/DCC
20	FC-2603005251	GRID B (FAN)	DC/AC/DCC
21	FC-2603005055	FAN BASE A (BODY)	DC/AC/DCC
22	FC-2603005258	GRABRAIL (TOP) (BODY)	DC/AC/DCC
23	FC-2603005220	SAND FILLER HATCH	DC/AC/DCC
24	FG-2683005001	GLASS (NUMBER BOARD) (REAR) (BODY) (LEFT)	DC/AC/DCC
	FG-2683005005	COMPLETE NUMBER BOARD (BODY) #3541	DC/AC/DCC
	FG-2683005006	COMPLETE NUMBER BOARD (BODY) #3544	DC/AC/DCC
	FG-2683005007	COMPLETE NUMBER BOARD (BODY) #3555	DC/AC/DCC
25	CF-0003005001	LIGHT LENS (TRAILING)	DC/AC/DCC
26	FC-2673005010	GRABRAIL (FRONT) (BODY)	DC/AC/DCC
27	FC-2683005010	GRABRAIL (RIGHT) (BODY)	DC/AC/DCC
28	CE-0003005001	CLASSFICTION LENS (FRONT)	DC/AC/DCC
29	FC-2623005019	VENT GRID (LEFT) (BODY)	DC/AC/DCC
30	FC-2603005144	SHELL (#3541) (#3544) (#3555)	DC/AC/DCC
	FC-2603005152	COMPLETE ASSY SHELL (#3541) (#3544) (#3555)	DC/AC/DCC
31	FC-2603005088	BRAKE VALVE	DC/AC/DCC

No.	Part No.	Description	Version
32	FC-2633005011	GRABRAIL (FRONT) (BODY)	DC/AC/DCC
33	FC-2603005273	HANDRAIL (CAB)	DC/AC/DCC
34	FC-2603005265	GRABRAIL (TOP) (NOSE OF CAB)	DC/AC/DCC
35	CG-2603005001	SEAT (INTERIOR)	DC/AC/DCC
36	FG-2633005001	LIGHT BOX (TOP OF INTERIOR)	DC/AC/DCC
37	FA-2613005001	WINDOW GLASS (SIDE) (RIGHT)	DC/AC/DCC
38	FG-2673005002	STEP A (CAB) (RIGHT)	DC/AC/DCC
39	FG-2623005013	STEP (CAB) (LEFT)	DC/AC/DCC
40	FG-2613005013	STEP (CAB) (RIGHT)	DC/AC/DCC
41	FC-2633005009	WIPER (FRONT)	DC/AC/DCC
42	FA-2633005001	WINDOW GLASS (FRONT)	DC/AC/DCC
43	CH-2603005002	NUMBER BASE (CAB) (STRAIGHT)	DC/AC/DCC
44	CB-0003005001	MARSLIGHT LENS (CAB)	DC/AC/DCC
45	FC-2603005283	HORN C	DC/AC/DCC
46	FG-2673005025	GLASS (NUMBER BOARD) (CAB) (FRONT) (LEFT)	DC/AC/DCC
	FG-2673005029	COMPLETE NUMBER BOARD (CAB) #3541	DC/AC/DCC
	FG-2673005030	COMPLETE NUMBER BOARD (CAB) #3544	DC/AC/DCC
	FG-2673005031	COMPLETE NUMBER BOARD (CAB) #3555	DC/AC/DCC

* Require Exchange

** Sold to MTH Service Centres Only

All Parts are priced as each and subject to change without notice

GP-35 BODY LIST (PRR)

No.	Part No.	Description	Version
1	FC-2603005077	CONTROL BOX (CAB) (BIG)	DC/AC/DCC
2	FC-2603005218	ANTENNA BLADE	DC/AC/DCC
3	FC-2603005172	CAB (#2258)	DC/AC/DCC
	FC-2603005173	CAB (#2268)	DC/AC/DCC
	FC-2603005174	CAB (#2273)	DC/AC/DCC
	FC-2603005196	COMPLETE ASSY CAB (#2258)	DC/AC/DCC
	FC-2603005197	COMPLETE ASSY CAB (#2268)	DC/AC/DCC
	FC-2603005198	COMPLETE ASSY CAB (#2273)	DC/AC/DCC
4	FC-2643005009	WIPER (REAR)	DC/AC/DCC
5	FG-2673005014	STEP B (CAB) (RIGHT)	DC/AC/DCC
6	FG-2673005022	STEP C (CAB) (RIGHT)	DC/AC/DCC
7	FC-2603005241	DEFLECTORS MIRROR A	DC/AC/DCC
8	AG-2603001008	TOP LIGHT PCB (CAB) (NO FLASH)	DC/AC/DCC
9	FA-2623005001	WINDOW GLASS (SIDE) (LEFT)	DC/AC/DCC
10	FC-2603005238	VENT GRID A (VENT)	DC/AC/DCC
11	FC-2603005231	RING LIFT	DC/AC/DCC
12	FC-2603005066	STACK COVER	DC/AC/DCC
13	FC-2603005247	GRID A (FAN)	DC/AC/DCC
	BD-2603005011	COMPLETE ASSY VENT (BODY)	DC/AC/DCC
14	BD-2603005014	FAN B (DYNAMIC BRAKES)	DC/AC/DCC
	BD-2603005018	COMPLETE ASSY DYNAMIC BRAKES	DC/AC/DCC
15	FC-2603005211	DYNAMIC BRAKES	DC/AC/DCC
16	BD-2603005006	FAN A (BODY)	DC/AC/DCC
17	FC-2603005051	FAN BASE (FLAT)	DC/AC/DCC
	BD-2603005027	COMPLETE ASSY VENT (FLAT)	DC/AC/DCC
18	FC-2613005021	VENT GRID (RIGHT) (BODY)	DC/AC/DCC
19	BD-2603005021	FAN C(FLAT)	DC/AC/DCC
20	FC-2603005254	GRID B (FAN)	DC/AC/DCC
21	FC-2603005058	FAN BASE A (BODY)	DC/AC/DCC
22	FC-2603005261	GRABRAIL (TOP) (BODY)	DC/AC/DCC
23	FC-2603005224	SAND FILLER HATCH	DC/AC/DCC
24	FG-2683005001	GLASS (NUMBER BOARD) (REAR) (BODY) (LEFT)	DC/AC/DCC
	FG-2683005017	COMPLETE NUMBER BOARD (BODY) #2258	DC/AC/DCC
	FG-2683005018	COMPLETE NUMBER BOARD (BODY) #2268	DC/AC/DCC
	FG-2683005019	COMPLETE NUMBER BOARD (BODY) #2273	DC/AC/DCC
25	CF-0003005001	LIGHT LENS (TRAILING)	DC/AC/DCC
26	FC-2673005014	GRABRAIL (FRONT) (BODY)	DC/AC/DCC
27	FC-2683005014	GRABRAIL (RIGHT) (BODY)	DC/AC/DCC
28	CE-0003005001	CLASSIFICATION LENS (FRONT)	DC/AC/DCC
29	FC-2623005022	VENT GRID (LEFT) (BODY)	DC/AC/DCC
30	FC-2603005149	SHELL (#2258) (#2268) (#2273)	DC/AC/DCC
	FC-2603005157	COMPLETE ASSY SHELL (#2258) (#2268) (#2273)	DC/AC/DCC
31	FC-2603005092	BRAKE VALVE	DC/AC/DCC

No.	Part No.	Description	Version
32	FC-2633005015	GRABRAIL (FRONT) (BODY)	DC/AC/DCC
33	FC-2603005277	HANDRAIL (CAB)	DC/AC/DCC
34	FC-2603005269	GRABRAIL (TOP) (NOSE OF CAB)	DC/AC/DCC
35	CG-2603005001	SEAT (INTERIOR)	DC/AC/DCC
36	FG-2633005001	LIGHT BOX (TOP OF INTERIOR)	DC/AC/DCC
37	FA-2613005001	WINDOW GLASS (SIDE) (RIGHT)	DC/AC/DCC
38	FG-2673005006	STEP A (CAB) (RIGHT)	DC/AC/DCC
39	FG-2623005016	STEP (CAB) (LEFT)	DC/AC/DCC
40	FG-2613005018	STEP (CAB) (RIGHT)	DC/AC/DCC
41	FC-2633005009	WIPER (FRONT)	DC/AC/DCC
42	FA-2633005001	WINDOW GLASS (FRONT)	DC/AC/DCC
43	CH-2603005002	NUMBER BASE (CAB) (STRAIGHT)	DC/AC/DCC
44	CB-0003005001	MARSLIGHT LENS (CAB)	DC/AC/DCC
45	FC-2603005285	HORN C	DC/AC/DCC
46	FG-2673005025	GLASS (NUMBER BOARD) (CAB) (FRONT) (LEFT)	DC/AC/DCC
	FG-2673005041	COMPLETE NUMBER BOARD (CAB) #2258	DC/AC/DCC
	FG-2673005042	COMPLETE NUMBER BOARD (CAB) #2268	DC/AC/DCC
	FG-2673005043	COMPLETE NUMBER BOARD (CAB) #2273	DC/AC/DCC

* Require Exchange

** Sold to MTH Service Centres Only

All Parts are priced as each and subject to change without notice

GP-35 BODY LIST (EL)

No.	Part No.	Description	Version
1	FC-2663005017	SUN SHADE 1	DC/AC/DCC
2	FC-2603005216	ANTENNA BLADE	DC/AC/DCC
3	FC-2603005160	CAB (#2551)	DC/AC/DCC
	FC-2603005161	CAB (#2552)	DC/AC/DCC
	FC-2603005162	CAB (#2554)	DC/AC/DCC
	FC-2603005184	COMPLETE ASSY CAB (#2551)	DC/AC/DCC
	FC-2603005185	COMPLETE ASSY CAB (#2552)	DC/AC/DCC
	FC-2603005186	COMPLETE ASSY CAB (#2554)	DC/AC/DCC
4	FC-2643005009	WIPER (REAR)	DC/AC/DCC
5	FG-2673005011	STEP B (CAB) (RIGHT)	DC/AC/DCC
6	FG-2673005019	STEP C (CAB) (RIGHT)	DC/AC/DCC
7	FC-2603005241	DEFLECTORS MIRROR A	DC/AC/DCC
8	AG-2603001008	TOP LIGHT PCB (CAB) (NO FLASH)	DC/AC/DCC
9	FA-2623005001	WINDOW GLASS (SIDE) (LEFT)	DC/AC/DCC
10	FC-2603005236	VENT GRID A (VENT)	DC/AC/DCC
11	FC-2603005229	RING LIFT	DC/AC/DCC
12	FC-2603005063	STACK COVER	DC/AC/DCC
13	FC-2603005245	GRID A (FAN)	DC/AC/DCC
	BD-2603005009	COMPLETE ASSY VENT (BODY)	DC/AC/DCC
14	BD-2603005014	FAN B (DYNAMIC BRAKES)	DC/AC/DCC
	BD-2603005017	COMPLETE ASSY DYNAMINC BRAKES	DC/AC/DCC
15	FC-2603005209	DYNAMIC BRAKES	DC/AC/DCC
16	BD-2603005006	FAN A (BODY)	DC/AC/DCC
17	FC-2603005049	FAN BASE (FLAT)	DC/AC/DCC
	BD-2603005024	COMPLETE ASSY VENT (FLAT)	DC/AC/DCC
18	FC-2613005019	VENT GRID (RIGHT) (BODY)	DC/AC/DCC
19	BD-2603005021	FAN C(FLAT)	DC/AC/DCC
20	FC-2603005252	GRID B (FAN)	DC/AC/DCC
21	FC-2603005056	FAN BASE A (BODY)	DC/AC/DCC
22	FC-2603005259	GRABRAIL (TOP) (BODY)	DC/AC/DCC
23	FC-2603005221	SAND FILLER HATCH	DC/AC/DCC
24	FG-2683005001	GLASS (NUMBER BOARD) (REAR) (BODY) (LEFT)	DC/AC/DCC
	FG-2683005008	COMPLETE NUMBER BOARD (BODY) #2551	DC/AC/DCC
	FG-2683005009	COMPLETE NUMBER BOARD (BODY) #2552	DC/AC/DCC
	FG-2683005010	COMPLETE NUMBER BOARD (BODY) #2554	DC/AC/DCC
25	CF-0003005001	LIGHT LENS (TRAILING)	DC/AC/DCC
26	FC-2673005011	GRABRAIL (FRONT) (BODY)	DC/AC/DCC
27	FC-2683005011	GRABRAIL (RIGHT) (BODY)	DC/AC/DCC
28	CE-0003005001	CLASSFICTION LENS (FRONT)	DC/AC/DCC
29	FC-2623005020	VENT GRID (LEFT) (BODY)	DC/AC/DCC
30	FC-2603005145	SHELL (#2551) (#2552) (#2554)	DC/AC/DCC
	FC-2603005153	COMPLETE ASSY SHELL (#2551) (#2552) (#2554)	DC/AC/DCC
31	FC-2603005089	BRAKE VALVE	DC/AC/DCC

No.	Part No.	Description	Version
32	FC-2633005012	GRABRAIL (FRONT) (BODY)	DC/AC/DCC
33	FC-2603005274	HANDRAIL (CAB)	DC/AC/DCC
34	FC-2603005266	GRABRAIL (TOP) (NOSE OF CAB)	DC/AC/DCC
35	CG-2603005001	SEAT (INTERIOR)	DC/AC/DCC
36	FG-2633005001	LIGHT BOX (TOP OF INTERIOR)	DC/AC/DCC
37	FA-2613005001	WINDOW GLASS (SIDE) (RIGHT)	DC/AC/DCC
38	FG-2673005003	STEP A (CAB) (RIGHT)	DC/AC/DCC
39	FG-2623005014	STEP (CAB) (LEFT)	DC/AC/DCC
40	FG-2613005014	STEP (CAB) (RIGHT)	DC/AC/DCC
41	FC-2633005009	WIPER (FRONT)	DC/AC/DCC
42	FA-2633005001	WINDOW GLASS (FRONT)	DC/AC/DCC
43	CH-2603005002	NUMBER BASE (CAB) (STRAIGHT)	DC/AC/DCC
44	CB-0003005001	MARSLIGHT LENS (CAB)	DC/AC/DCC
45	FC-2603005281	HORN B	DC/AC/DCC
46	FG-2673005025	GLASS (NUMBER BOARD) (CAB) (FRONT) (LEFT)	DC/AC/DCC
	FG-2673005032	COMPLETE NUMBER BOARD (CAB) #2551	DC/AC/DCC
	FG-2673005033	COMPLETE NUMBER BOARD (CAB) #2552	DC/AC/DCC
	FG-2673005034	COMPLETE NUMBER BOARD (CAB) #2554	DC/AC/DCC

* Require Exchange

** Sold to MTH Service Centres Only

All Parts are priced as each and subject to change without notice

GP-35 BODY LIST (N&W)

No.	Part No.	Description	Version
1	FC-2663005018	SUN SHADE 1	DC/AC/DCC
2	FC-2603005298	ANTENNA 2 (CAB)	DC/AC/DCC
3	FC-2603005169	CAB (#1304)	DC/AC/DCC
	FC-2603005170	CAB (#1305)	DC/AC/DCC
	FC-2603005171	CAB (#1307)	DC/AC/DCC
	FC-2603005193	COMPLETE ASSY CAB (#1304)	DC/AC/DCC
	FC-2603005194	COMPLETE ASSY CAB (#1305)	DC/AC/DCC
	FC-2603005195	COMPLETE ASSY CAB (#1307)	DC/AC/DCC
4	FC-2643005009	WIPER (REAR)	DC/AC/DCC
5	FG-2673005012	STEP B (CAB) (RIGHT)	DC/AC/DCC
6	FG-2673005020	STEP C (CAB) (RIGHT)	DC/AC/DCC
7	FC-2603005241	DEFLECTORS MIRROR A	DC/AC/DCC
8	AG-2603001008	TOP LIGHT PCB (CAB) (NO FLASH)	DC/AC/DCC
9	FA-2623005001	WINDOW GLASS (SIDE) (LEFT)	DC/AC/DCC
10	FC-2603005237	VENT GRID A (VENT)	DC/AC/DCC
11	FC-2603005230	RING LIFT	DC/AC/DCC
12	FC-2603005064	STACK COVER	DC/AC/DCC
13	FC-2603005246	GRID A (FAN)	DC/AC/DCC
	BD-2603005010	COMPLETE ASSY VENT (BODY)	DC/AC/DCC
14			DC/AC/DCC
15	FC-2603005212	TOP OF COVER (BODY)	DC/AC/DCC
16	BD-2603005006	FAN A (BODY)	DC/AC/DCC
17	FC-2603005050	FAN BASE (FLAT)	DC/AC/DCC
	BD-2603005025	COMPLETE ASSY VENT (FLAT)	DC/AC/DCC
18	FC-2613005020	VENT GRID (RIGHT) (BODY)	DC/AC/DCC
19	BD-2603005021	FAN C (FLAT)	DC/AC/DCC
20	FC-2603005253	GRID B (FAN)	DC/AC/DCC
21	FC-2603005057	FAN BASE A (BODY)	DC/AC/DCC
22	FC-2603005260	GRABRAIL (TOP) (BODY)	DC/AC/DCC
23	FC-2603005222	SAND FILLER HATCH	DC/AC/DCC
24	FG-2683005001	GLASS (NUMBER BOARD) (REAR) (BODY) (LEFT)	DC/AC/DCC
	FG-2683005011	COMPLETE NUMBER BOARD (BODY) #1304	DC/AC/DCC
	FG-2683005012	COMPLETE NUMBER BOARD (BODY) #1305	DC/AC/DCC
	FG-2683005013	COMPLETE NUMBER BOARD (BODY) #1307	DC/AC/DCC
25	CF-0003005001	LIGHT LENS (TRAILING)	DC/AC/DCC
26	FC-2673005012	GRABRAIL (FRONT) (BODY)	DC/AC/DCC
27	FC-2683005012	GRABRAIL (RIGHT) (BODY)	DC/AC/DCC
28	CE-0003005001	CLASSIFICATION LENS (FRONT)	DC/AC/DCC
29	FC-2623005021	VENT GRID (LEFT) (BODY)	DC/AC/DCC
30	FC-2603005146	SHELL (#1304) (#1305) (#1307)	DC/AC/DCC
	FC-2603005154	COMPLETE ASSY SHELL (#1304) (#1305) (#1307)	DC/AC/DCC
31	FC-2603005090	BRAKE VALVE	DC/AC/DCC
32	FC-2633005013	GRABRAIL (FRONT) (BODY)	DC/AC/DCC

No.	Part No.	Description	Version
33	FC-2603005275	HANDRAIL (CAB)	DC/AC/DCC
34	FC-2603005267	GRABRAIL (TOP) (NOSE OF CAB)	DC/AC/DCC
35	CG-2603005001	SEAT (INTERIOR)	DC/AC/DCC
36	FG-2633005001	LIGHT BOX (TOP OF INTERIOR)	DC/AC/DCC
37	FA-2613005001	WINDOW GLASS (SIDE) (RIGHT)	DC/AC/DCC
38	FG-2673005004	STEP A (CAB) (RIGHT)	DC/AC/DCC
39	FG-2623005015	STEP (CAB) (LEFT)	DC/AC/DCC
40	FG-2613005015	STEP (CAB) (RIGHT)	DC/AC/DCC
41	FC-2633005009	WIPER (FRONT)	DC/AC/DCC
42	FA-2633005001	WINDOW GLASS (FRONT)	DC/AC/DCC
43	CH-2603005003	NUMBER BASE (CAB) (ROUND)	DC/AC/DCC
44	CB-0003005001	MARSLIGHT LENS (CAB)	DC/AC/DCC
45	FC-2603005280	HORN A	DC/AC/DCC
46	FG-2673005025	GLASS (NUMBER BOARD) (CAB) (FRONT) (LEFT)	DC/AC/DCC
	FG-2673005035	COMPLETE NUMBER BOARD (CAB) #1304	DC/AC/DCC
	FG-2673005036	COMPLETE NUMBER BOARD (CAB) #1305	DC/AC/DCC
	FG-2673005037	COMPLETE NUMBER BOARD (CAB) #1307	DC/AC/DCC

* Require Exchange

** Sold to MTH Service Centres Only

All Parts are priced as each and subject to change without notice

GP-35 BODY LIST (NYC)

No.	Part No.	Description	Version
1			DC/AC/DCC
2	FC-2603005217	ANTENNA BLADE	DC/AC/DCC
3	FC-2603005175	CAB (#6131)	DC/AC/DCC
	FC-2603005176	CAB (#6133)	DC/AC/DCC
	FC-2603005177	CAB (#6142)	DC/AC/DCC
	FC-2603005199	COMPLETE ASSY CAB (#6131)	DC/AC/DCC
	FC-2603005200	COMPLETE ASSY CAB (#6133)	DC/AC/DCC
	FC-2603005201	COMPLETE ASSY CAB (#6142)	DC/AC/DCC
4	FC-2643005009	WIPER (REAR)	DC/AC/DCC
5	FG-2673005013	STEP B (CAB) (RIGHT)	DC/AC/DCC
6	FG-2673005021	STEP C (CAB) (RIGHT)	DC/AC/DCC
7	FC-2603005241	DEFLECTORS MIRROR A	DC/AC/DCC
8	AG-2603001008	TOP LIGHT PCB (CAB) (NO FLASH)	DC/AC/DCC
9	FA-2623005001	WINDOW GLASS (SIDE) (LEFT)	DC/AC/DCC
10	FC-2603005237	VENT GRID A (VENT)	DC/AC/DCC
11	FC-2603005230	RING LIFT	DC/AC/DCC
12	FC-2603005065	STACK COVER	DC/AC/DCC
13	FC-2603005246	GRID A (FAN)	DC/AC/DCC
	BD-2603005010	COMPLETE ASSY VENT (BODY)	DC/AC/DCC
14	FC-2603005297	WIRE OF BELL	DC/AC/DCC
15	FC-2603005215	TOP OF COVER (BODY)	DC/AC/DCC
16	BD-2603005006	FAN A (BODY)	DC/AC/DCC
17	FC-2603005050	FAN BASE (FLAT)	DC/AC/DCC
	BD-2603005026	COMPLETE ASSY VENT (FLAT)	DC/AC/DCC
18	FC-2613005020	VENT GRID (RIGHT) (BODY)	DC/AC/DCC
19	BD-2603005021	FAN C (FLAT)	DC/AC/DCC
20	FC-2603005253	GRID B (FAN)	DC/AC/DCC
21	FC-2603005057	FAN BASE A (BODY)	DC/AC/DCC
22	FC-2603005260	GRABRAIL (TOP) (BODY)	DC/AC/DCC
23	FC-2603005223	SAND FILLER HATCH	DC/AC/DCC
24	FG-2683005001	GLASS (NUMBER BOARD) (REAR) (BODY) (LEFT)	DC/AC/DCC
	FG-2683005014	COMPLETE NUMBER BOARD (BODY) #6131	DC/AC/DCC
	FG-2683005015	COMPLETE NUMBER BOARD (BODY) #6133	DC/AC/DCC
	FG-2683005016	COMPLETE NUMBER BOARD (BODY) #6142	DC/AC/DCC
25	CF-0003005001	LIGHT LENS (TRAILING)	DC/AC/DCC
26	FC-2673005013	GRABRAIL (FRONT) (BODY)	DC/AC/DCC
27	FC-2683005013	GRABRAIL (RIGHT) (BODY)	DC/AC/DCC
28	CE-0003005001	CLASSIFICATION LENS (FRONT)	DC/AC/DCC
29	FC-2623005021	VENT GRID (LEFT) (BODY)	DC/AC/DCC
30	FC-2603005147	SHELL (#6131) (#6133) (#6142)	DC/AC/DCC
	FC-2603005155	COMPLETE ASSY SHELL (#6131) (#6133) (#6142)	DC/AC/DCC
31	FC-2603005091	BRAKE VALVE	DC/AC/DCC
32	FC-2633005014	GRABRAIL (FRONT) (BODY)	DC/AC/DCC

No.	Part No.	Description	Version
33	FC-2603005276	HANDRAIL (CAB)	DC/AC/DCC
34	FC-2603005268	GRABRAIL (TOP) (NOSE OF CAB)	DC/AC/DCC
35	CG-2603005001	SEAT (INTERIOR)	DC/AC/DCC
36	FG-2633005001	LIGHT BOX (TOP OF INTERIOR)	DC/AC/DCC
37	FA-2613005001	WINDOW GLASS (SIDE) (RIGHT)	DC/AC/DCC
38	FG-2673005005	STEP A (CAB) (RIGHT)	DC/AC/DCC
39	FG-2623005015	STEP (CAB) (LEFT)	DC/AC/DCC
40	FG-2613005015	STEP (CAB) (RIGHT)	DC/AC/DCC
41	FC-2633005009	WIPER (FRONT)	DC/AC/DCC
42	FA-2633005001	WINDOW GLASS (FRONT)	DC/AC/DCC
43	CH-2603005003	NUMBER BASE (CAB) (ROUND)	DC/AC/DCC
44	CB-0003005001	MARSLIGHT LENS (CAB)	DC/AC/DCC
45	FC-2603005284	HORN C	DC/AC/DCC
46	FG-2673005025	GLASS (NUMBER BOARD) (CAB) (FRONT) (LEFT)	DC/AC/DCC
	FG-2673005038	COMPLETE NUMBER BOARD (CAB) #6131	DC/AC/DCC
	FG-2673005039	COMPLETE NUMBER BOARD (CAB) #6133	DC/AC/DCC
	FG-2673005040	COMPLETE NUMBER BOARD (CAB) #6142	DC/AC/DCC

* Require Exchange

** Sold to MTH Service Centres Only

All Parts are priced as each and subject to change without notice

GP-35 BODY LIST (UP)

No.	Part No.	Description	Version
1	FC-2663005021	SUN SHADE 3	DC/AC/DCC
2	FC-2603005299	BEACON BASE	DC/AC/DCC
3	FC-2603005166	CAB (#750)	DC/AC/DCC
	FC-2603005167	CAB (#756)	DC/AC/DCC
	FC-2603005168	CAB (#759)	DC/AC/DCC
	FC-2603005190	COMPLETE ASSY CAB (#750)	DC/AC/DCC
	FC-2603005191	COMPLETE ASSY CAB (#756)	DC/AC/DCC
	FC-2603005192	COMPLETE ASSY CAB (#759)	DC/AC/DCC
4	FC-2643005009	WIPER (REAR)	DC/AC/DCC
5	FG-2673005016	STEP B (CAB) (RIGHT)	DC/AC/DCC
6	FG-2673005024	STEP C (CAB) (RIGHT)	DC/AC/DCC
7	FC-2603005241	DEFLECTORS MIRROR A	DC/AC/DCC
8	AG-2603001007	TOP LIGHT PCB (CAB) (LEFT)	DC/AC/DCC
9	FA-2623005001	WINDOW GLASS (SIDE) (LEFT)	DC/AC/DCC
10	FC-2603005240	VENT GRID A (VENT)	DC/AC/DCC
11	FC-2603005233	RING LIFT	DC/AC/DCC
12	FC-2603005068	STACK COVER	DC/AC/DCC
13	FC-2603005249	GRID A (FAN)	DC/AC/DCC
	BD-2603005013	COMPLETE ASSY VENT (BODY)	DC/AC/DCC
14	BD-2603005014	FAN B (DYNAMIC BRAKES)	DC/AC/DCC
	BD-2603005020	COMPLETE ASSY DYNAMIC BRAKES	DC/AC/DCC
15	FC-2603005214	DYNAMIC BRAKES	DC/AC/DCC
16	BD-2603005006	FAN A (BODY)	DC/AC/DCC
17	FC-2603005053	FAN BASE (FLAT)	DC/AC/DCC
	BD-2603005029	COMPLETE ASSY VENT (FLAT)	DC/AC/DCC
18	FC-2613005023	VENT GRID (RIGHT) (BODY)	DC/AC/DCC
19	BD-2603005021	FAN C(FLAT)	DC/AC/DCC
20	FC-2603005256	GRID B (FAN)	DC/AC/DCC
21	FC-2603005060	FAN BASE A (BODY)	DC/AC/DCC
22	FC-2603005263	GRABRAIL (TOP) (BODY)	DC/AC/DCC
23	FC-2603005226	SAND FILLER HATCH	DC/AC/DCC
24	FG-2683005001	GLASS (NUMBER BOARD) (REAR) (BODY) (LEFT)	DC/AC/DCC
	FG-2683005020	COMPLETE NUMBER BOARD (BODY) #750	DC/AC/DCC
	FG-2683005021	COMPLETE NUMBER BOARD (BODY) #756	DC/AC/DCC
	FG-2683005022	COMPLETE NUMBER BOARD (BODY) #759	DC/AC/DCC
25	CF-0003005001	LIGHT LENS (TRAILING)	DC/AC/DCC
26	FC-2673005016	GRABRAIL (FRONT) (BODY)	DC/AC/DCC
27	FC-2683005016	GRABRAIL (RIGHT) (BODY)	DC/AC/DCC
28	CE-0003005001	CLASSIFICATION LENS (FRONT)	DC/AC/DCC
29	FC-2623005024	VENT GRID (LEFT) (BODY)	DC/AC/DCC
30	FC-2603005148	SHELL (#750) (#756) (#759)	DC/AC/DCC
	FC-2603005156	COMPLETE ASSY SHELL (#750) (#756) (#759)	DC/AC/DCC
31	FC-2603005094	BRAKE VALVE	DC/AC/DCC

No.	Part No.	Description	Version
32	FC-2633005017	GRABRAIL (FRONT) (BODY)	DC/AC/DCC
33	FC-2603005279	HANDRAIL (CAB)	DC/AC/DCC
34	FC-2603005271	GRABRAIL (TOP) (NOSE OF CAB)	DC/AC/DCC
35	CG-2603005001	SEAT (INTERIOR)	DC/AC/DCC
36	FG-2633005001	LIGHT BOX (TOP OF INTERIOR)	DC/AC/DCC
37	FA-2613005001	WINDOW GLASS (SIDE) (RIGHT)	DC/AC/DCC
38	FG-2673005008	STEP A (CAB) (RIGHT)	DC/AC/DCC
39	FG-2623005018	STEP (CAB) (LEFT)	DC/AC/DCC
40	FG-2613005017	STEP (CAB) (RIGHT)	DC/AC/DCC
41	FC-2633005009	WIPER (FRONT)	DC/AC/DCC
42	FA-2633005001	WINDOW GLASS (FRONT)	DC/AC/DCC
43	CH-2603005004	NUMBER BASE (CAB) (STRAIGHT)	DC/AC/DCC
44	CB-0003005001	MARSLIGHT LENS (CAB)	DC/AC/DCC
45	FC-2603005288	HORN B	DC/AC/DCC
46	FG-2673005025	GLASS (NUMBER BOARD) (CAB) (FRONT) (LEFT)	DC/AC/DCC
	FG-2673005047	COMPLETE NUMBER BOARD (CAB) #750	DC/AC/DCC
	FG-2673005048	COMPLETE NUMBER BOARD (CAB) #756	DC/AC/DCC
	FG-2673005049	COMPLETE NUMBER BOARD (CAB) #759	DC/AC/DCC

* Require Exchange

** Sold to MTH Service Centres Only

All Parts are priced as each and subject to change without notice

GP-35 BODY LIST (SP)

No.	Part No.	Description	Version
1	FC-2663005019	SUN SHADE 1	DC/AC/DCC
2	FC-2603005287	BELL C	DC/AC/DCC
3	FC-2603005181	CAB (#6580)	DC/AC/DCC
	FC-2603005182	CAB (#6582)	DC/AC/DCC
	FC-2603005183	CAB (#6587)	DC/AC/DCC
	FC-2603005205	COMPLETE ASSY CAB (#6580)	DC/AC/DCC
	FC-2603005206	COMPLETE ASSY CAB (#6582)	DC/AC/DCC
	FC-2603005207	COMPLETE ASSY CAB (#6587)	DC/AC/DCC
4	FC-2643005009	WIPER (REAR)	DC/AC/DCC
5	FG-2673005015	STEP B (CAB) (RIGHT)	DC/AC/DCC
6	FG-2673005023	STEP C (CAB) (RIGHT)	DC/AC/DCC
7	FC-2603005241	DEFLECTORS MIRROR A	DC/AC/DCC
8	AG-2603001008	TOP LIGHT PCB (CAB) (NO FLASH)	DC/AC/DCC
9	FA-2623005001	WINDOW GLASS (SIDE) (LEFT)	DC/AC/DCC
10	FC-2603005239	VENT GRID A (VENT)	DC/AC/DCC
11	FC-2603005232	RING LIFT	DC/AC/DCC
12	FC-2603005067	STACK COVER	DC/AC/DCC
13	FC-2603005248	GRID A (FAN)	DC/AC/DCC
	BD-2603005012	COMPLETE ASSY VENT (BODY)	DC/AC/DCC
14	BD-2603005014	FAN B (DYNAMIC BRAKES)	DC/AC/DCC
	BD-2603005019	COMPLETE ASSY DYNAMINC BRAKES	DC/AC/DCC
15	FC-2603005213	DYNAMIC BRAKES	DC/AC/DCC
16	BD-2603005006	FAN A (BODY)	DC/AC/DCC
17	FC-2603005052	FAN BASE (FLAT)	DC/AC/DCC
	BD-2603005028	COMPLETE ASSY VENT (FLAT)	DC/AC/DCC
18	FC-2613005022	VENT GRID (RIGHT) (BODY)	DC/AC/DCC
19	BD-2603005021	FAN C(FLAT)	DC/AC/DCC
20	FC-2603005255	GRID B (FAN)	DC/AC/DCC
21	FC-2603005059	FAN BASE A (BODY)	DC/AC/DCC
22	FC-2603005262	GRABRAIL (TOP) (BODY)	DC/AC/DCC
23	FC-2603005225	SAND FILLER HATCH	DC/AC/DCC
24	CE-0003005003	CLASSFIACION LIGHT LEN (FRONT)	DC/AC/DCC
25	CF-0003005001	LIGHT LENS (TRAILING)	DC/AC/DCC
26	FC-2673005015	GRABRAIL (FRONT) (BODY)	DC/AC/DCC
27	FC-2683005015	GRABRAIL (RIGHT) (BODY)	DC/AC/DCC
28	CE-0003005001	CLASSFIACION LENS (FRONT)	DC/AC/DCC
29	FC-2623005023	VENT GRID (LEFT) (BODY)	DC/AC/DCC
30	FC-2603005151	SHELL (#6580) (#6582) (#6587)	DC/AC/DCC
	FC-2603005159	COMPLETE ASSY SHELL (#6580) (#6582) (#6587)	DC/AC/DCC
31	FC-2603005093	BRAKE VALVE	DC/AC/DCC
32	FC-2633005016	GRABRAIL (FRONT) (BODY)	DC/AC/DCC
33	FC-2603005278	HANDRAIL (CAB)	DC/AC/DCC
34	FC-2603005270	GRABRAIL (TOP) (NOSE OF CAB)	DC/AC/DCC

No.	Part No.	Description	Version
35	CG-2603005001	SEAT (INTERIOR)	DC/AC/DCC
36	FG-2633005001	LIGHT BOX (TOP OF INTERIOR)	DC/AC/DCC
37	FA-2613005001	WINDOW GLASS (SIDE) (RIGHT)	DC/AC/DCC
38	FG-2673005007	STEP A (CAB) (RIGHT)	DC/AC/DCC
39	FG-2623005017	STEP (CAB) (LEFT)	DC/AC/DCC
40	FG-2613005016	STEP (CAB) (RIGHT)	DC/AC/DCC
41	FC-2633005009	WIPER (FRONT)	DC/AC/DCC
42	FA-2633005001	WINDOW GLASS (FRONT)	DC/AC/DCC
43	CH-2603005005	NUMBER BASE (CAB) (ROUND)	DC/AC/DCC
44	CB-0003005001	MARSLIGHT LENS (CAB)	DC/AC/DCC
45	FC-2603005286	HORN C	DC/AC/DCC
46	FG-2673005025	GLASS (NUMBER BOARD) (CAB) (FRONT) (LEFT)	DC/AC/DCC
	FG-2673005044	COMPLETE NUMBER BOARD (CAB) #6580	DC/AC/DCC
	FG-2673005045	COMPLETE NUMBER BOARD (CAB) #6582	DC/AC/DCC
	FG-2673005046	COMPLETE NUMBER BOARD (CAB) #6587	DC/AC/DCC
47	CH-2633005003	EMERGENCY STOP LIGHT BASE	DC/AC/DCC
48	CE-0003005002	EMERGENCY STOP LIGHT LENS	DC/AC/DCC
49	CH-2603005001	EMERGENCY STOP LIGHT BAR	DC/AC/DCC
50	CA-0003005001	HEADLIGHT LENS (DUAL) (FRONT)	DC/AC/DCC

* Require Exchange

** Sold to MTH Service Centres Only

All Parts are priced as each and subject to change without notice

GP-35 BODY LIST (SANTA FE)

No.	Part No.	Description	Version
1			DC/AC/DCC
2			DC/AC/DCC
3	FC-2603005178	CAB (#1438)	DC/AC/DCC
	FC-2603005179	CAB (#1441)	DC/AC/DCC
	FC-2603005180	CAB (#1449)	DC/AC/DCC
	FC-2603005202	COMPLETE ASSY CAB (#1438)	DC/AC/DCC
	FC-2603005203	COMPLETE ASSY CAB (#1441)	DC/AC/DCC
	FC-2603005204	COMPLETE ASSY CAB (#1449)	DC/AC/DCC
4	FC-2643005009	WIPER (REAR)	DC/AC/DCC
5	FG-2673005009	STEP B (CAB) (RIGHT)	DC/AC/DCC
6	FG-2673005017	STEP C (CAB) (RIGHT)	DC/AC/DCC
7	FC-2603005242	DEFLECTORS MIRROR B	DC/AC/DCC
8	AG-2603001008	TOP LIGHT PCB (CAB) (NO FLASH)	DC/AC/DCC
9	FA-2623005001	WINDOW GLASS (SIDE) (LEFT)	DC/AC/DCC
10	FC-2603005234	VENT GRID A (VENT)	DC/AC/DCC
11	FC-2603005227	RING LIFT	DC/AC/DCC
12	FC-2603005061	STACK COVER	DC/AC/DCC
13	FC-2603005243	GRID A (FAN)	DC/AC/DCC
	BD-2603005007	COMPLETE ASSY VENT (BODY)	DC/AC/DCC
14	BD-2603005014	FAN B (DYNAMIC BRAKES)	DC/AC/DCC
	BD-2603005015	COMPLETE ASSY DYNAMIC BRAKES	DC/AC/DCC
15	FC-2603005289	DYNAMIC BRAKES	DC/AC/DCC
16	BD-2603005006	FAN A (BODY)	DC/AC/DCC
17	FC-2603005047	FAN BASE (FLAT)	DC/AC/DCC
	BD-2603005022	COMPLETE ASSY VENT (FLAT)	DC/AC/DCC
18	FC-2613005024	VENT GRID (RIGHT) (BODY)	DC/AC/DCC
19	BD-2603005021	FAN C (FLAT)	DC/AC/DCC
20	FC-2603005250	GRID B (FAN)	DC/AC/DCC
21	FC-2603005054	FAN BASE A (BODY)	DC/AC/DCC
22	FC-2603005257	GRABRAIL (TOP) (BODY)	DC/AC/DCC
23	FC-2603005219	SAND FILLER HATCH	DC/AC/DCC
24	FG-2683005001	GLASS (NUMBER BOARD) (REAR) (BODY) (LEFT)	DC/AC/DCC
	FG-2683005002	COMPLETE NUMBER BOARD (BODY) #1438	DC/AC/DCC
	FG-2683005003	COMPLETE NUMBER BOARD (BODY) #1441	DC/AC/DCC
	FG-2683005004	COMPLETE NUMBER BOARD (BODY) #1449	DC/AC/DCC
25	CF-0003005001	LIGHT LENS (TRAILING)	DC/AC/DCC
26	FC-2673005009	GRABRAIL (FRONT) (BODY)	DC/AC/DCC
27	FC-2683005009	GRABRAIL (RIGHT) (BODY)	DC/AC/DCC
28	CE-0003005001	CLASSIFICATION LENS (FRONT)	DC/AC/DCC
29	FC-2623005025	VENT GRID (LEFT) (BODY)	DC/AC/DCC
30	FC-2603005150	SHELL (#1438) (#1441) (#1449)	DC/AC/DCC
	FC-2603005158	COMPLETE ASSY SHELL (#1438) (#1441) (#1449)	DC/AC/DCC
31	FC-2603005087	BRAKE VALVE	DC/AC/DCC

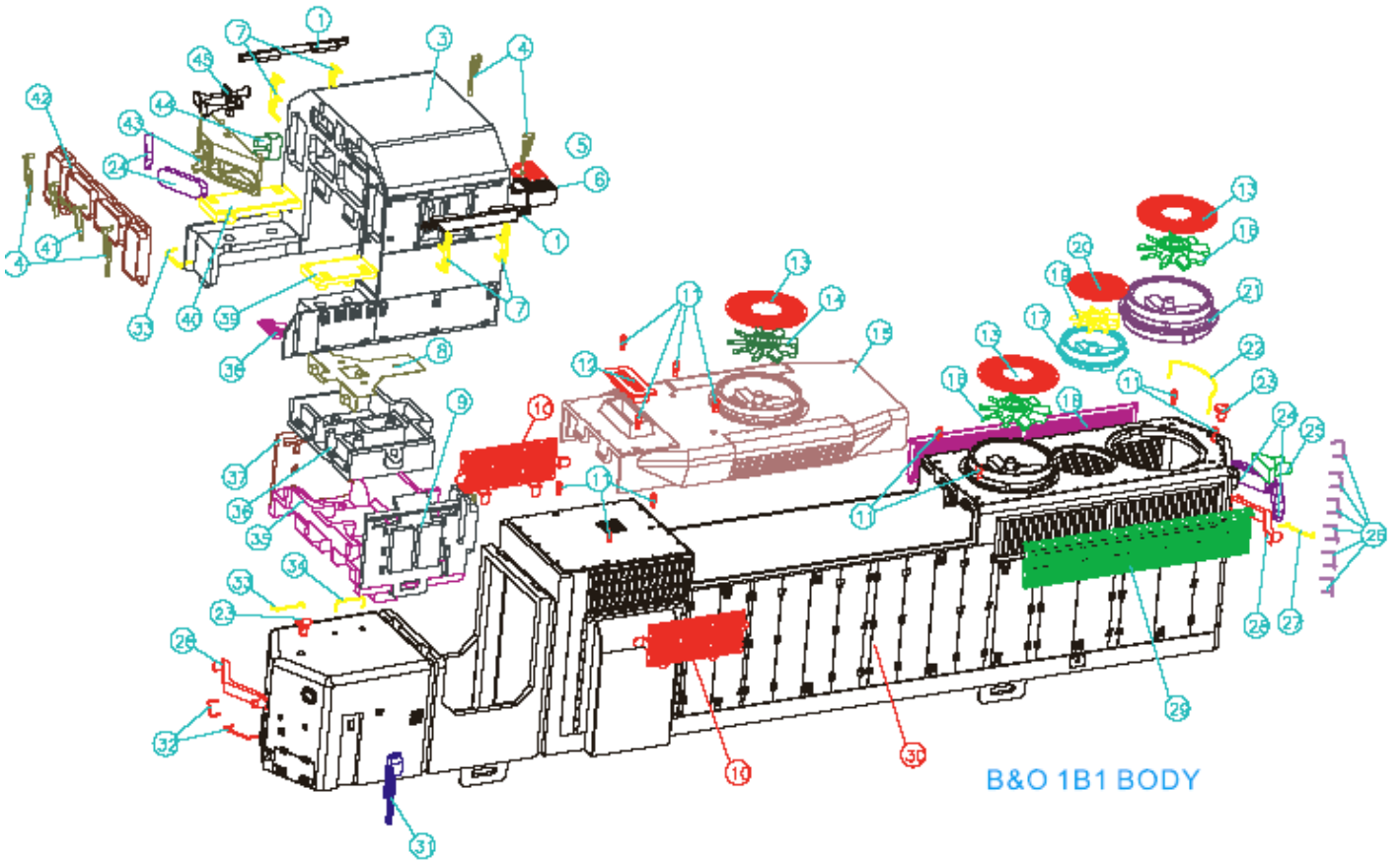
No.	Part No.	Description	Version
32	FC-2633005010	GRABRAIL (FRONT) (BODY)	DC/AC/DCC
33	FC-2603005272	HANDRAIL (CAB)	DC/AC/DCC
34	FC-2603005264	GRABRAIL (TOP) (NOSE OF CAB)	DC/AC/DCC
35	CG-2603005001	SEAT (INTERIOR)	DC/AC/DCC
36	FG-2633005001	LIGHT BOX (TOP OF INTERIOR)	DC/AC/DCC
37	FA-2613005001	WINDOW GLASS (SIDE) (RIGHT)	DC/AC/DCC
38	FG-2673005001	STEP A (CAB) (RIGHT)	DC/AC/DCC
39	FG-2623005012	STEP (CAB) (LEFT)	DC/AC/DCC
40	FG-2613005012	STEP (CAB) (RIGHT)	DC/AC/DCC
41	FC-2633005009	WIPER (FRONT)	DC/AC/DCC
42	FA-2633005001	WINDOW GLASS (FRONT)	DC/AC/DCC
43	CH-2603005003	NUMBER BASE (CAB) (ROUND)	DC/AC/DCC
44	CB-0003005001	MARSLIGHT LENS (CAB)	DC/AC/DCC
45	FC-2603005282	HORN C	DC/AC/DCC
46	FG-2673005025	GLASS (NUMBER BOARD) (CAB) (FRONT) (LEFT)	DC/AC/DCC
	FG-2673005026	COMPLETE NUMBER BOARD (CAB) #1438	DC/AC/DCC
	FG-2673005027	COMPLETE NUMBER BOARD (CAB) #1441	DC/AC/DCC
	FG-2673005028	COMPLETE NUMBER BOARD (CAB) #1449	DC/AC/DCC

* Require Exchange

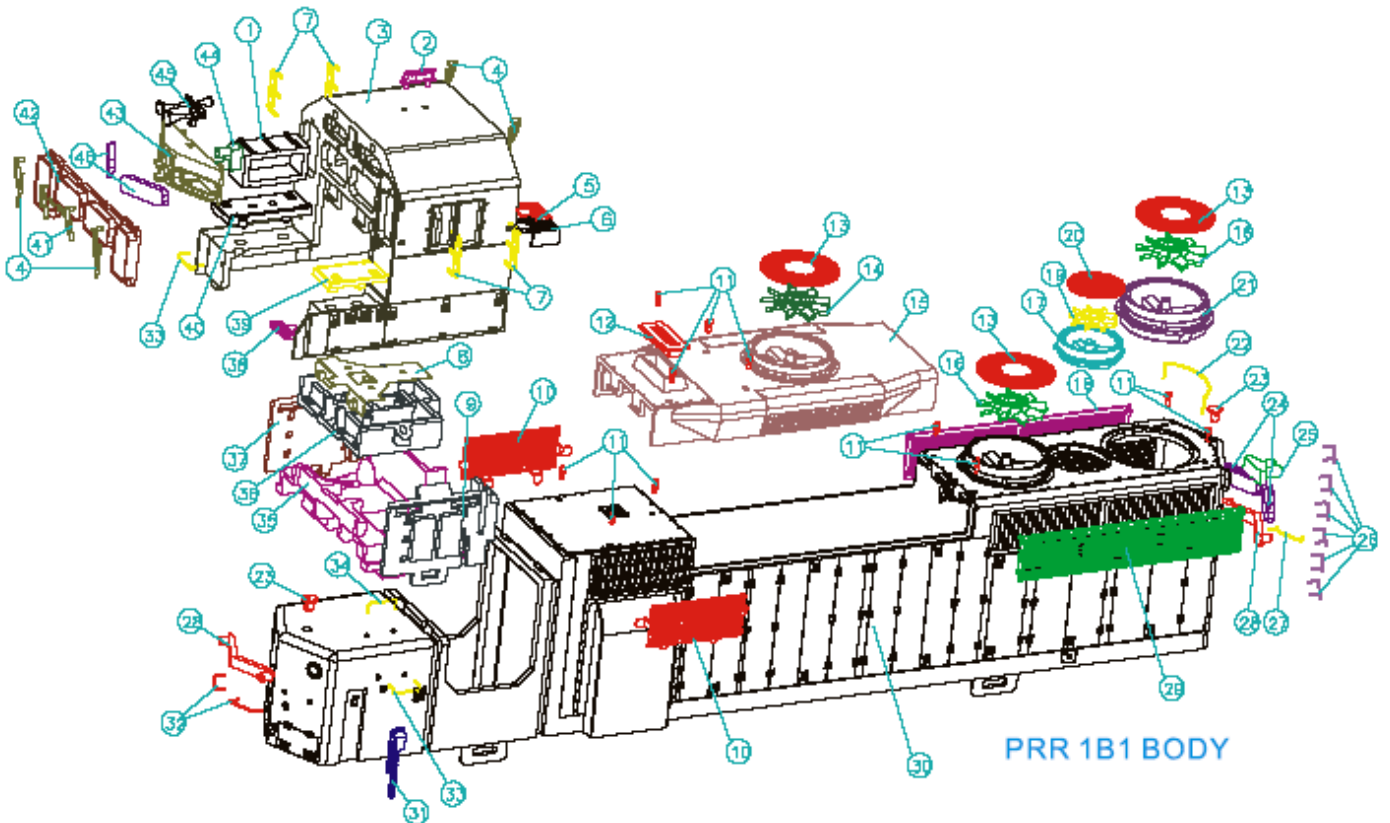
** Sold to MTH Service Centres Only

All Parts are priced as each and subject to change without notice

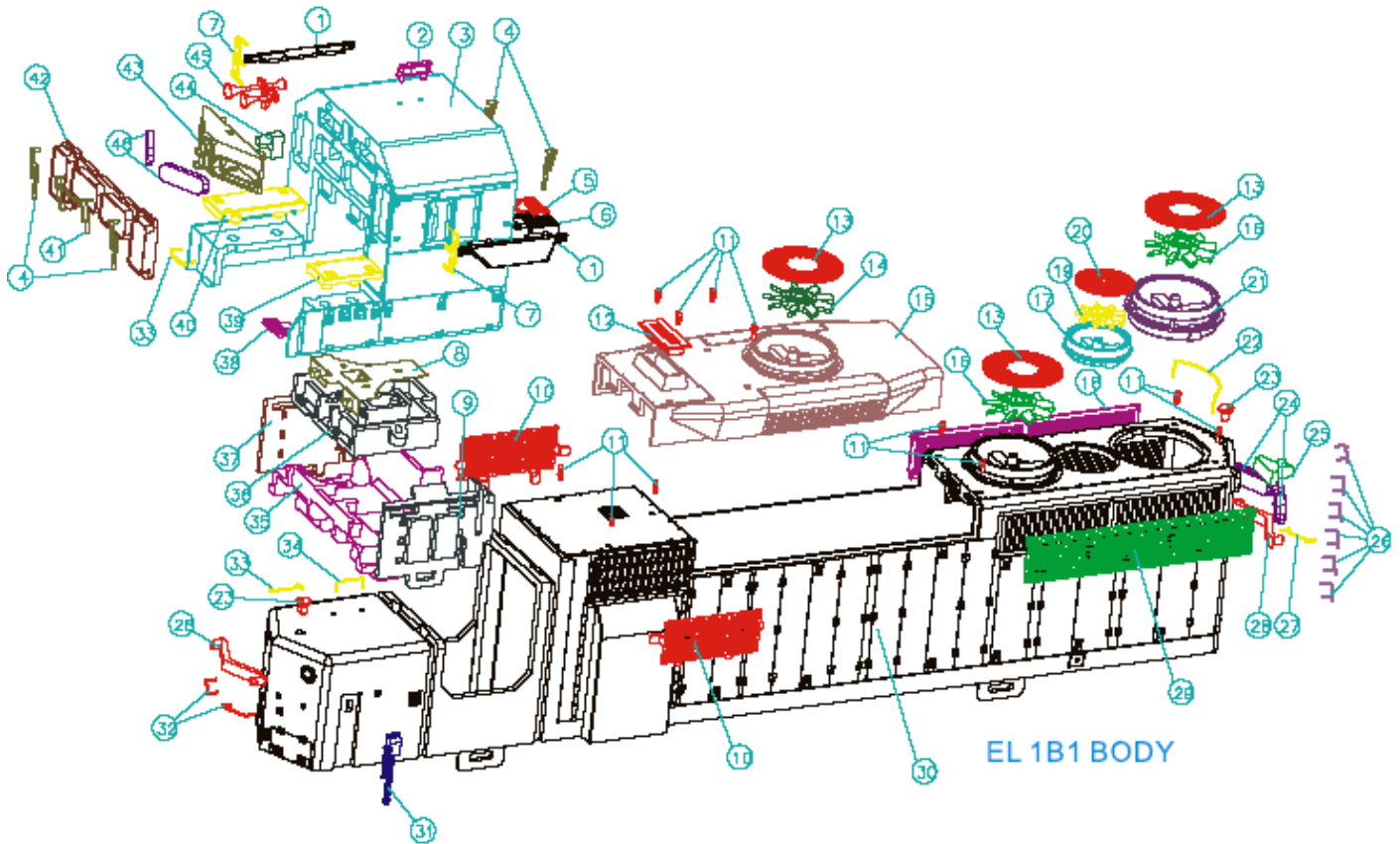
GP-35 BODY EXPLODED VIEW (B&O)



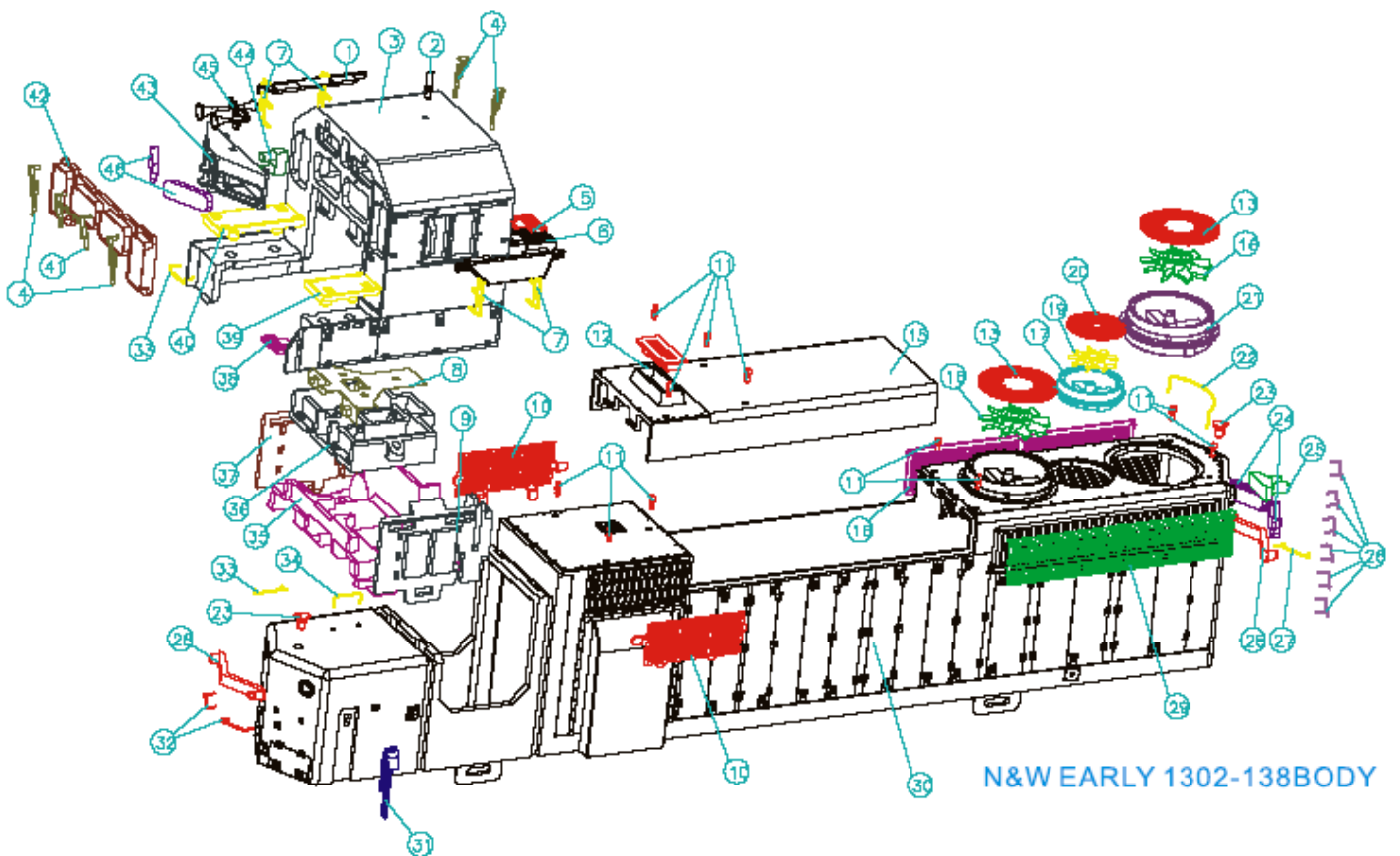
GP-35 BODY EXPLODED VIEW (PRR)



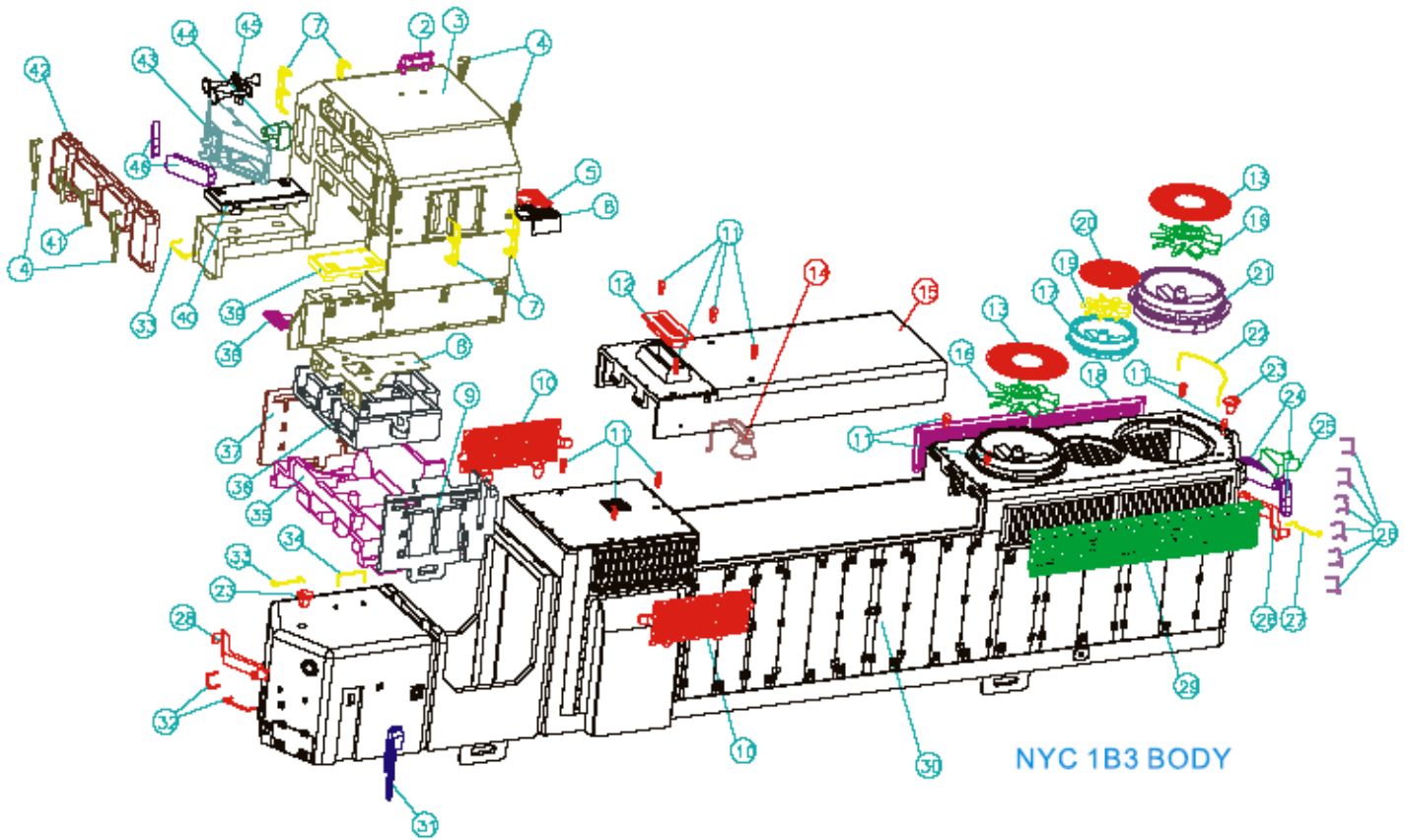
GP-35 BODY EXPLODED VIEW (EL)



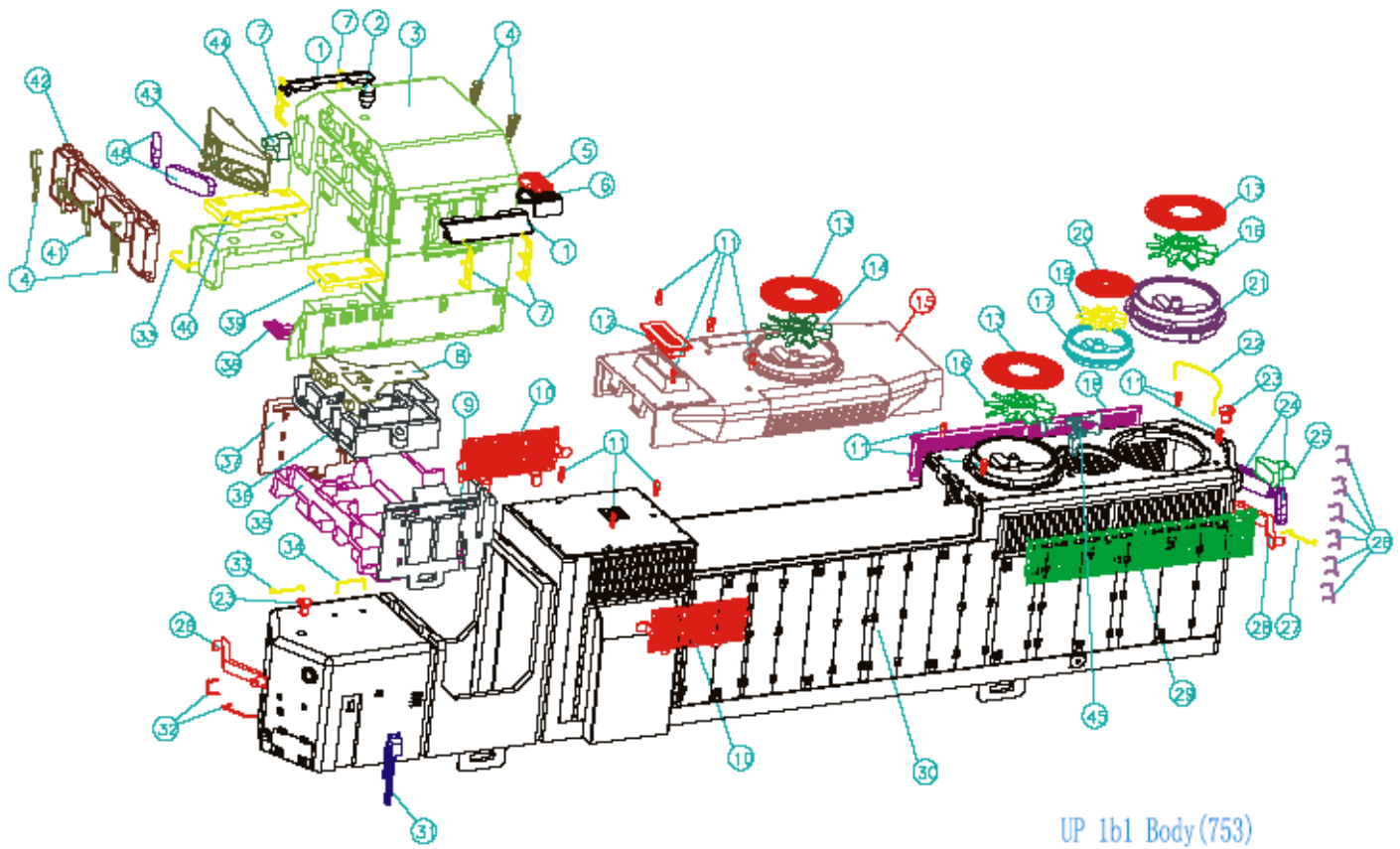
GP-35 BODY EXPLODED VIEW (N&W)



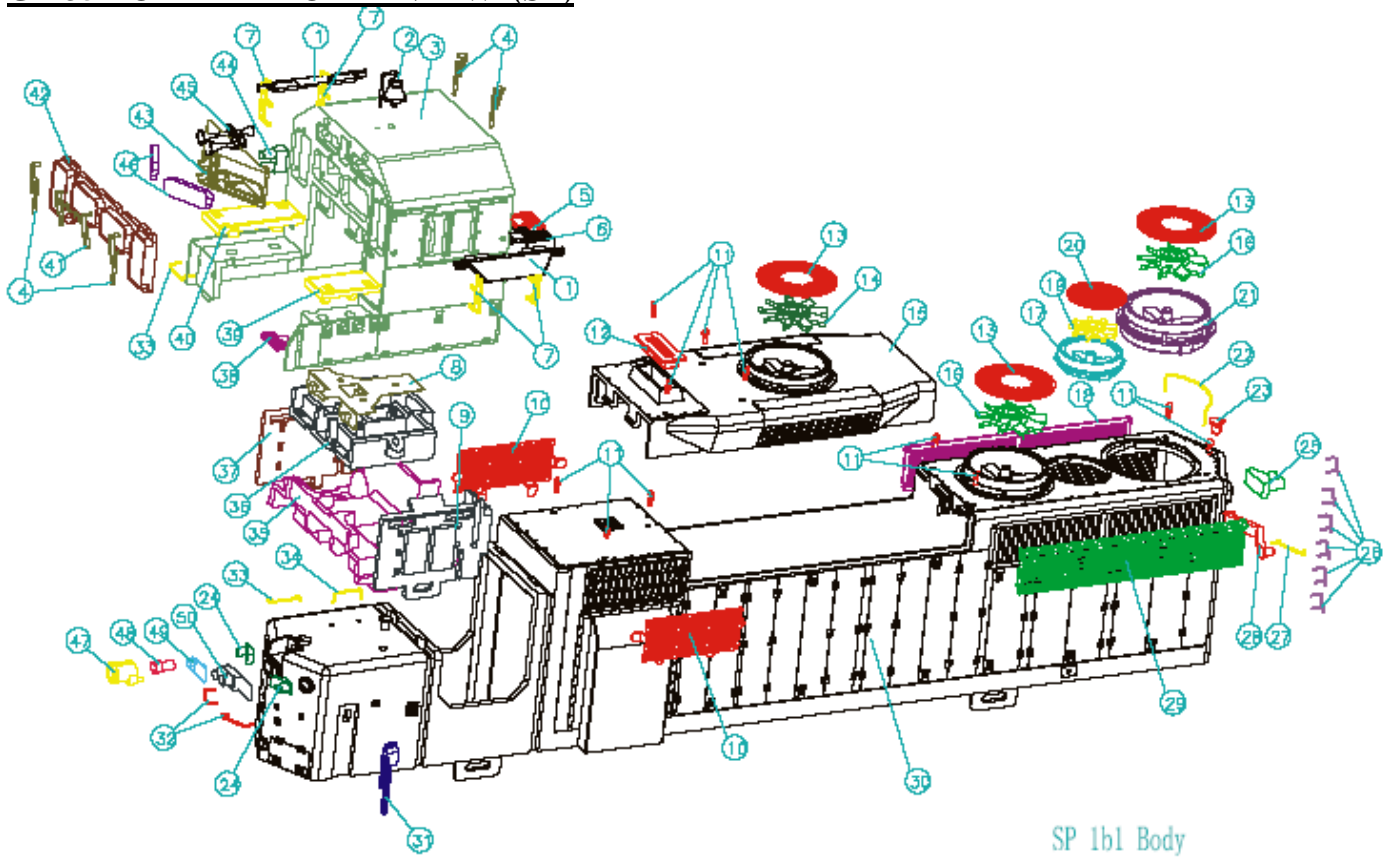
GP-35 BODY EXPLODED VIEW (NYC)



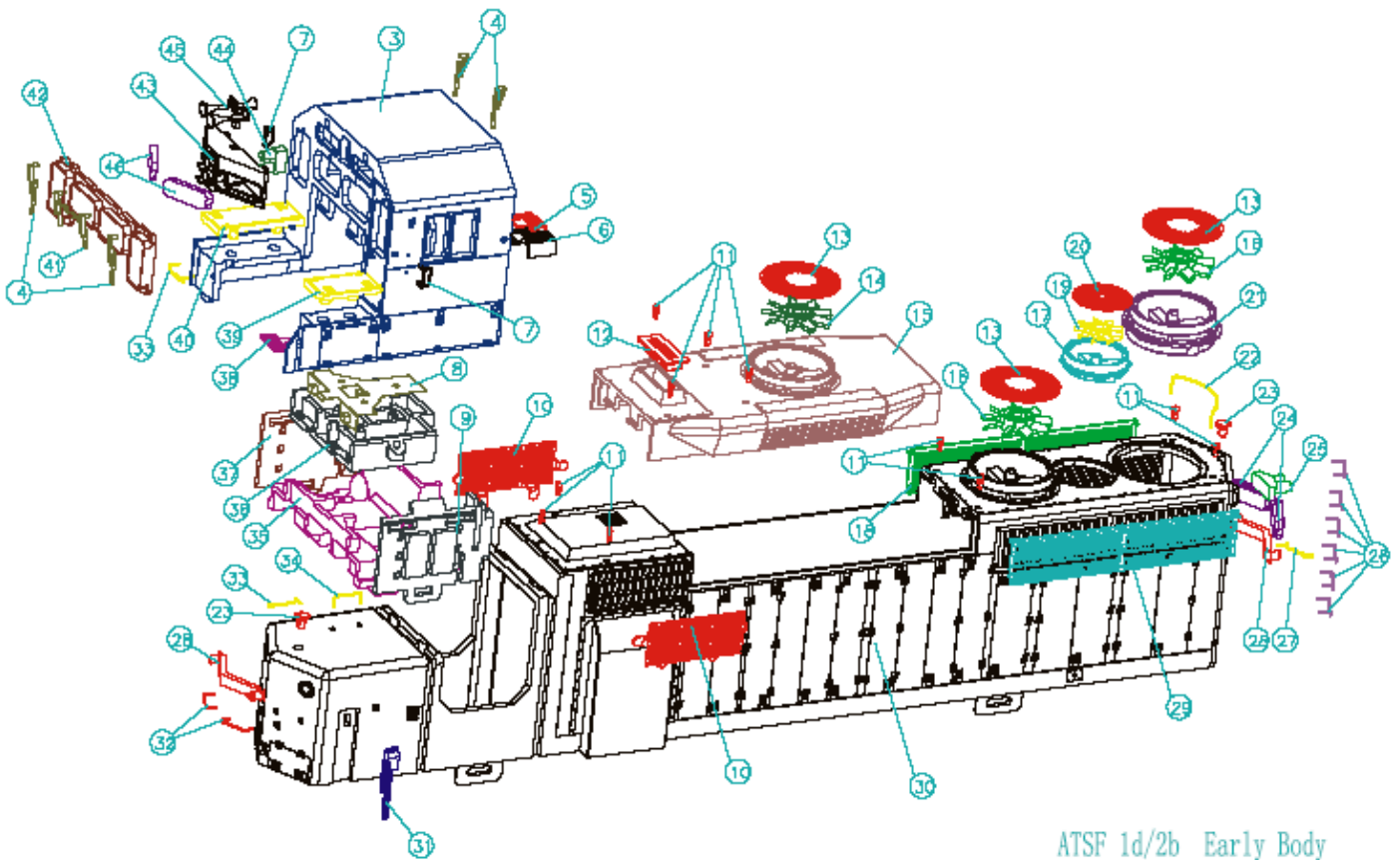
GP-35 BODY EXPLODED VIEW (UP)



GP-35 BODY EXPLODED VIEW (SP)



GP-35 BODY EXPLODED VIEW (SANTA FE)



GP-35 CHASSIS LIST (B&O)

No.	Part No.	Description	Version
1	AH-003001001	CONNECTION PCB	DC/AC/DCC
2	IA-0003001000	SCREW 2.0 X 5.0	COMMON
3	IA-0003005002	SCREW 2.6 X 13.0	COMMON
4	AE-2603CS0002	PS3.0 MAIN BOARD(NEW)	DC
	AE-2603000009	NMRA BOARD	DCC
	AE-2603000052	PS3.0 MAIN BOARD(NEW)	AC
5	IH-2603005001	MAIN PCB SUPPORT	DC/AC/DCC
6	AF-2603005001	VOLUME CONTROL & CAPACITANCE PCB-A	DC
7	DH-2603005016	WEIGHT	DC/AC/DCC
8	BE-2603001002	FLY WHEEL - BLACK	DC/AC
	BE-2603001002	FLY WHEEL - BLACK W/ WHITE STE	DC
	BE-2603001003	FLY WHEEL - BLACK	DCC
	BE-2603001004	FLY WHEEL - BLACK W/ WHITE STE	DCC
9		SCREW 1.2 X 5.5	COMMON
10			
11	AG-2600005001	TACH BOARD	DC/AC
12	BE-0003JC5001	MOTOR	DC/AC/DCC
	BE-0003JC5002	MOTOR ASSY SET	DC
	BE-0003JC5003	MOTOR ASSY SET	AC
	BE-0003JC5004	MOTOR ASSY SET	DCC
13	BI-0003005019	MOTOR SUPPORT	DC/AC/DCC
14	BI-0003005020	MOTOR ABSORBER	DC/AC/DCC
15	FC-2603005104	SIDE STANCHION B (DOOR)	DC/AC/DCC
16	FC-2603005129	HANDRAIL A	DC/AC/DCC
17	AG-2603001001	LIGHT PCB #1 (FRONT)	DC/AC/DCC
18	CH-2633005001	LIGHT PCB COVER-1 (FRONT)	DC/AC/DCC
19	FC-2683005002	HANDRAIL (FRONT) (RIGHT)	DC/AC/DCC
20	FC-2603005120	SIDE STANCHION D (DOOR)	DC/AC/DCC
21	CH-2603005006	LIGHT DOME (CAB)	DC/AC/DCC
22	FC-2633005002	HANDRAIL A (FRONT)	DC/AC/DCC
23	FG-2603005018	SIDE STEP C	DC/AC/DCC
24	FG-2603005010	SIDE STEP B	DC/AC/DCC
25	FG-2603005002	SIDE STEP A	DC/AC/DCC
26	FC-2663005010	HANDRAIL B (F&R)	DC/AC/DCC
27	FC-2643005002	GRABRAIL (REAR)	DC/AC/DCC
28	DG-2603005032	LIFT BAR (PILOT)	DC/AC/DCC
29	DG-2603005048	AIR HOSE	DC/AC/DCC
30	DG-2633005002	FOOTBOARD (PILOT)	DC/AC/DCC
31	DG-2603005040	PIPE	DC/AC/DCC
32	FC-2663005002	HANDRAIL A (F&R)	DC/AC/DCC
33	DG-2603005017	RUNNING BOARD (DC)	DC/DCC
	DG-2603005024	RUNNING BOARD (AC)	AC
34	FC-2603005096	SIDE STANCHION A (DOOR)	DC/AC/DCC

No.	Part No.	Description	Version
35	FC-2673005002	HANDRAIL (FRONT) (LEFT)	DC/AC/DCC
36	FC-2603005073	AIR VALVE C	DC/AC/DCC
37	FC-2613005004	CYLINDER (RIGHT)	DC/AC/DCC
38	FC-2603005291	BELL B	DC/AC/DCC
39	DH-2603005001	CHASSIS A (DC)	DC/DCC
	DH-2603005008	CHASSIS A (AC)	AC
40	FC-2623005005	CYLINDER (LEFT)	DC/AC/DCC
41	FC-2603005112	SIDE STANCHION C (DOOR)	DC/AC/DCC
42	FC-2603005137	HANDRAIL B	DC/AC/DCC
43	CH-2643005001	LIGHT PCB COVER (REAR)	DC/AC/DCC
44	AG-2603001003	LIGHT PCB #1 (REAR)	AC / DC / DCC
45	DA-2623005002	CYLINDER BRAKE (LEFT)	DC/AC/DCC
46	DB-2603005002	BRAKE TANK PIPE	DC/AC/DCC
47	DB-2603005009	SPRING BRACKET	DC/AC/DCC
48	DB-2613005007	TRUCK SIDE FRAME (RIGHT)	DC/AC/DCC
49	BD-0003005001	PICK UP PLATE	DC/AC/DCC
50	DA-2613005002	CYLINDER BRAKE (RIGHT)	DC/AC/DCC
51	DD-2653005005	COUPLER WASH PLATE	DC/DCC
52	EH-2603005004	WORM SHAFT	DC/AC/DCC
53	EG-0003001000	WORM BEARING	DC/AC/DCC
54	ID-0003005001	WASHER	COMMON
55	EG-0023005002	GEAR BOX (LEFT)	DC/AC/DCC
56	DC-2603005001	WHEEL SHAFT	DC/AC/DCC
57	DC-2603005002	DC WHEEL	DC/DCC
	DC-2603005003	AC WHEEL	AC
58	DC-0003001000	GEAR(M0.5,12)	DC/AC/DCC
59	BI-0003005004	GEAR BOX COVER (BOTTOM)	DC/AC/DCC
60	EG-2603005003	DOUBLE GEAR(M0.5 T20/T14)	DC/AC/DCC
61	EG-2603005002	GEAR(M0.5,T15)	DC/AC/DCC
62	EH-2603005005	GEAR SHAFT	DC/AC/DCC
63	EH-2603005003	WORM	DC/AC/DCC
64	EH-2603005001	UNIVERSAL SHAFT (HEAD)	DC/AC/DCC
65	EH-2603005002	UNIVERSAL SHAFT	DC/AC/DCC
66	EG-2603005001	GEAR(M0.5,T11)	DC/AC/DCC
67	EG-0013005002	GEAR BOX (RIGHT)	DC/AC/DCC
68	IA-0003005003	SCREW	COMMON
69	DB-2623005007	TRUCK SIDE FRAME (LEFT)	DC/AC/DCC
70	IH-2603005003	SPEED RECORDERS B	DC/AC/DCC
71	FC-2623005012	FUEL TANK (LEFT)	DC/AC/DCC
72	FC-2603005080	OIL TANK PIPE	DC/AC/DCC
73	FC-2613005011	FUEL TANK (RIGHT)	DC/AC/DCC
74	BF-0003005001	SPEAKER HOLDER	DC/AC/DCC
75	BF-0003001000	SPEAKER	DC

GP-35 CHASSIS LIST (B&O)

No.	Part No.	Description	Version
76	BF-0003005002	SPEAKER COVER	DC/AC/DCC
77		BUSH	
78		SCREW 2.0 X 7.0	COMMON
79	DD-2603000002	COUPLER BOX	DC/DCC
80	DD-2603000001	KADEE COUPLER	DC/DCC
81	DD-2603000003	COUPLER COVER	DC/DCC
82	DD-2653005004	COUPLER SPACER	DC/DCC
83	IA-0003005004	SCREW	COMMON
84	DD-2653005006	DRAFT BOX STRAP	DC/DCC
85	AG-2603001009	ELECTRIC COUPLER PCB	DC
86	DD-2603001000	COUPLER ASSY	DC
N.S	BC-2603001010	DC WIRE HARNESS SET (COMMO	DC
N.S	BC-2603001012	AC WIRE HARNESS SET (COMMO	AC
N.S	BC-2603001014	DCC WIRE HARNESS SET (COMM	DCC
N.S	BC-2603001016	30 PIN CONN W/ WIRE SERIES	AC / DC
N.S	BC-2603001018	5PIN CONN W/ WIRE SERIES	DC/AC/DCC
N.S	BC-2603001019	20 PIN CONN WIRE SERIES	DCC
N.S	BC-2603001020	COUPLER WIRE (FRONT)	DC/AC
N.S	BC-2603001021	COUPLER WIRE (REAR)	DC/AC
N.S	BC-2603001022	SPEAKER WIRE	DC/AC
N.S	BC-2603001023	MOTOR WIRE	DC/AC/DCC
N.S	BC-2603001024	TRUCK WIRE (FRONT)	DC/AC/DCC
N.S	BC-2603001025	TRUCK WIRE (REAR)	DC/AC
N.S	BC-2603001026	2 PIN CONN W/ WIRE SERIES FOR TRUCK (REAR)	DCC
N.S	BC-2603001027	TACH BOARD WIRE	DC/AC
N.S	BC-2603001028	BLACK WIRE	AC

* Require Exchange

** Sold to MTH Service Centres Only

All Parts are priced as each and subject to change without notice

GP-35 CHASSIS LIST (PRR)

No.	Part No.	Description	Version
1	AH-003001001	CONNECTION PCB	AC / DC / DCC
2	IA-0003001000	SCREW 2.0 X 5.0	COMMON
3	IA-0003005002	SCREW 2.6 X 13.0	COMMON
4	AE-2603CS0002	PS3.0 MAIN BOARD(NEW)	DC
	AE-2603000009	NMRA BOARD	DCC
	AE-2603000052	PS3.0 MAIN BOARD(NEW)	AC
5	IH-2603005001	MAIN PCB SUPPORT	DC/AC/DCC
6	AF-2603005001	VOLUME CONTROL & CAPACITANCE PCB-A	DC
7	DH-2603005020	WEIGHT	DC/AC/DCC
8	BE-2603001002	FLY WHEEL - BLACK	DC , AC
	BE-2603001002	FLY WHEEL - BLACK W/ WHITE ST	DC
	BE-2603001003	FLY WHEEL - BLACK	DCC
	BE-2603001004	FLY WHEEL - BLACK W/ WHITE ST	DCC
9		SCREW 1.2 X 5.5	COMMON
10			
11	AG-2600005001	TACH BOARD	AC / DC
12	BE-0003JC5001	MOTOR	DC/AC/DCC
	BE-0003JC5002	MOTOR ASSY SET	DC
	BE-0003JC5003	MOTOR ASSY SET	AC
	BE-0003JC5004	MOTOR ASSY SET	DCC
13	BI-0003005019	MOTOR SUPPORT	DC/AC/DCC
14	BI-0003005020	MOTOR ABSORBER	DC/AC/DCC
15	FC-2603005108	SIDE STANCHION B (DOOR)	DC/AC/DCC
16	FC-2603005133	HANDRAIL A	DC/AC/DCC
17	AG-2603001001	LIGHT PCB #1 (FRONT)	AC / DC / DCC
18	CH-2633005001	LIGHT PCB COVER-1 (FRONT)	DC/AC/DCC
19	FC-2683005006	HANDRAIL (FRONT) (RIGHT)	DC/AC/DCC
20	FC-2603005124	SIDE STANCHION D (DOOR)	DC/AC/DCC
21	CH-2603005006	LIGHT DOME (CAB)	DC/AC/DCC
22	FC-2633005008	HANDRAIL C (FRONT)	DC/AC/DCC
23	FG-2603005022	SIDE STEP C	DC/AC/DCC
24	FG-2603005014	SIDE STEP B	DC/AC/DCC
25	FG-2603005006	SIDE STEP A	DC/AC/DCC
26	FC-2663005014	HANDRAIL B (F&R)	DC/AC/DCC
27	FC-2643005006	GRABRAIL (REAR)	DC/AC/DCC
28	DG-2603005036	LIFT BAR (PILOT)	DC/AC/DCC
29	DG-2603005052	AIR HOSE	DC/AC/DCC
30	DG-2633005006	FOOTBOARD (PILOT)	DC/AC/DCC
31	DG-2603005044	PIPE	DC/AC/DCC
32	FC-2663005006	HANDRAIL A (F&R)	DC/AC/DCC
33	DG-2603005022	RUNNING BOARD (DC)	DC/DCC
	DG-2603005029	RUNNING BOARD (AC)	AC
34	FC-2603005100	SIDE STANCHION A (DOOR)	DC/AC/DCC

No.	Part No.	Description	Version
35	FC-2673005006	HANDRAIL (FRONT) (LEFT)	DC/AC/DCC
36	FC-2603005070	AIR VALVE A	DC/AC/DCC
37	FC-2613005008	CYLINDER (RIGHT)	DC/AC/DCC
38	FC-2603005295	BELL B	DC/AC/DCC
39	DH-2603005005	CHASSIS A (DC)	DC/DCC
	DH-2603005012	CHASSIS A (AC)	AC
40	FC-2623005009	CYLINDER (LEFT)	DC/AC/DCC
41	FC-2603005116	SIDE STANCHION C (DOOR)	DC/AC/DCC
42	FC-2603005141	HANDRAIL B	DC/AC/DCC
43	CH-2643005001	LIGHT PCB COVER (REAR)	DC/AC/DCC
44	AG-2603001003	LIGHT PCB #1 (REAR)	DC/AC/DCC
45	DA-2623005006	CYLINDER BRAKE (LEFT)	DC/AC/DCC
46	DB-2603005006	BRAKE TANK PIPE	DC/AC/DCC
47	DB-2603005009	SPRING BRACKET	DC/AC/DCC
48	DB-2613005005	TRUCK SIDE FRAME (RIGHT)	DC/AC/DCC
49	BD-0003005001	PICK UP PLATE	DC/AC/DCC
50	DA-2613005006	CYLINDER BRAKE (RIGHT)	DC/AC/DCC
51	DD-2653005005	COUPLER WASH PLATE	DC/DCC
52	EH-2603005004	WORM SHAFT	DC/AC/DCC
53	EG-0003001000	WORM BEARING	DC/AC/DCC
54	ID-0003005001	WASHER	COMMON
55	EG-0023005006	GEAR BOX (LEFT)	DC/AC/DCC
56	DC-2603005001	WHEEL SHAFT	DC/AC/DCC
57	DC-2603005002	DC WHEEL	DC/DCC
	DC-2603005003	AC WHEEL	AC
58	DC-0003001000	GEAR(M0.5,12)	DC/AC/DCC
59	BI-0003005008	GEAR BOX COVER (BOTTOM)	DC/AC/DCC
60	EG-2603005003	DOUBLE GEAR(M0.5 T20/T14)	DC/AC/DCC
61	EG-2603005002	GEAR(M0.5,T15)	DC/AC/DCC
62	EH-2603005005	GEAR SHAFT	DC/AC/DCC
63	EH-2603005003	WORM	DC/AC/DCC
64	EH-2603005001	UNIVERSAL SHAFT (HEAD)	DC/AC/DCC
65	EH-2603005002	UNIVERSAL SHAFT	DC/AC/DCC
66	EG-2603005001	GEAR(M0.5,T11)	DC/AC/DCC
67	EG-0013005006	GEAR BOX (RIGHT)	DC/AC/DCC
68	IA-0003005003	SCREW	COMMON
69	DB-2623005005	TRUCK SIDE FRAME (LEFT)	DC/AC/DCC
70	IH-2603005002	读数器管 A/Speed Recorders A	DC/AC/DCC
71	FC-2623005017	FUEL TANK (LEFT)	DC/AC/DCC
72	FC-2603005084	OIL TANK PIPE	DC/AC/DCC
73	FC-2613005014	FUEL TANK (RIGHT)	DC/AC/DCC
74	BF-0003005001	SPEAKER HOLDER	DC/AC/DCC
75	BF-0003001000	SPEAKER	DC

GP-35 CHASSIS LIST (PRR)

No.	Part No.	Description	Version /Road Name
76	BF-0003005002	SPEAKER COVER	DC/AC/DCC
77		BUSH	
78		SCREW 2.0 X 7.0	COMMON
79	DD-2603000002	COUPLER BOX	DC/DCC
80	DD-2603000001	KADEE COUPLER	DC/DCC
81	DD-2603000003	COUPLER COVER	DC/DCC
82	DD-2653005004	COUPLER SPACER	DC/DCC
83	IA-0003005004	SCREW	COMMON
84	DD-2653005006	DRAFT BOX STRAP	DC/DCC
85	AG-2603001009	ELECTRIC COUPLER PCB	DC
86	DD-2603001000	COUPLER ASSY	DC
N.S	BC-2603001010	DC WIRE HARNESS SET (COMMO	DC
N.S	BC-2603001012	AC WIRE HARNESS SET (COMMO	AC
N.S	BC-2603001014	DCC WIRE HARNESS SET (COMM	DCC
N.S	BC-2603001016	30 PIN CONN W/ WIRE SERIES	DC/AC
N.S	BC-2603001018	5PIN CONN W/ WIRE SERIES	DC/AC/DCC
N.S	BC-2603001019	20 PIN CONN WIRE SERIES	DCC
N.S	BC-2603001020	COUPLER WIRE (FRONT)	DC/AC
N.S	BC-2603001021	COUPLER WIRE (REAR)	DC/AC
N.S	BC-2603001022	SPEAKER WIRE	DC/AC
N.S	BC-2603001023	MOTOR WIRE	DC/AC/DCC
N.S	BC-2603001024	TRUCK WIRE (FRONT)	DC/AC/DCC
N.S	BC-2603001025	TRUCK WIRE (REAR)	DC/AC
N.S	BC-2603001026	2 PIN CONN W/ WIRE SERIES FOR T	DCC
N.S	BC-2603001027	TACH BOARD WIRE	DC/AC
N.S	BC-2603001028	BLACK WIRE	AC

* Require Exchange

** Sold to MTH Service Centres Only

All Parts are priced as each and subject to change without notice

GP-35 CHASSIS LIST (NYC)

No.	Part No.	Description	Version
1	AH-003001001	CONNECTION PCB	AC / DC / DCC
2	IA-0003001000	SCREW 2.0 X 5.0	COMMON
3	IA-0003005002	SCREW 2.6 X 13.0	COMMON
4	AE-2603CS0002	PS3.0 MAIN BOARD(NEW)	DC
	AE-2603000009	NMRA BOARD	DCC
	AE-2603000052	PS3.0 MAIN BOARD(NEW)	AC
5	IH-2603005001	MAIN PCB SUPPORT	DC/AC/DCC
6	AF-2603005001	VOLUME CONTROL & CAPACITANCE PCB-A	DC
7	DH-2603005019	WEIGHT	DC/AC/DCC
8	BE-2603001002	FLY WHEEL - BLACK	DC/AC
	BE-2603001002	FLY WHEEL - BLACK W/ WHITE ST	DC
	BE-2603001003	FLY WHEEL - BLACK	DCC
	BE-2603001004	FLY WHEEL - BLACK W/ WHITE ST	DCC
9		SCREW 1.2 X 5.5	COMMON
10			
11	AG-2600005001	TACH BOARD	DC/AC
12	BE-0003JC5001	MOTOR	DC/AC/DCC
	BE-0003JC5002	MOTOR ASSY SET	DC
	BE-0003JC5003	MOTOR ASSY SET	AC
	BE-0003JC5004	MOTOR ASSY SET	DCC
13	BI-0003005019	MOTOR SUPPORT	DC/AC/DCC
14	BI-0003005020	MOTOR ABSORBER	DC/AC/DCC
15	FC-2603005107	SIDE STANCHION B (DOOR)	DC/AC/DCC
16	FC-2603005132	HANDRAIL A	DC/AC/DCC
17	AG-2603001001	LIGHT PCB #1 (FRONT)	DC/AC/DCC
18	CH-2633005001	LIGHT PCB COVER-1 (FRONT)	DC/AC/DCC
19	FC-2683005005	HANDRAIL (FRONT) (RIGHT)	DC/AC/DCC
20	FC-2603005123	SIDE STANCHION D (DOOR)	DC/AC/DCC
21	CH-2603005006	LIGHT DOME (CAB)	DC/AC/DCC
22	FC-2633005005	HANDRAIL A (FRONT)	DC/AC/DCC
23	FG-2603005021	SIDE STEP C	DC/AC/DCC
24	FG-2603005013	SIDE STEP B	DC/AC/DCC
25	FG-2603005005	SIDE STEP A	DC/AC/DCC
26	FC-2663005013	HANDRAIL B (F&R)	DC/AC/DCC
27	FC-2643005005	GRABRAIL (REAR)	DC/AC/DCC
28	DG-2603005035	LIFT BAR (PILOT)	DC/AC/DCC
29	DG-2603005051	AIR HOSE	DC/AC/DCC
30	DG-2633005005	FOOTBOARD (PILOT)	DC/AC/DCC
31	DG-2603005043	PIPE	DC/AC/DCC
32	FC-2663005005	HANDRAIL A (F&R)	DC/AC/DCC
33	DG-2603005019	RUNNING BOARD (DC)	DC/DCC
	DG-2603005026	RUNNING BOARD (AC)	AC
34	FC-2603005099	SIDE STANCHION A (DOOR)	DC/AC/DCC

No.	Part No.	Description	Version
35	FC-2673005005	HANDRAIL (FRONT) (LEFT)	DC/AC/DCC
36	FC-2603005075	AIR VALVE C	DC/AC/DCC
37	FC-2613005007	CYLINDER (RIGHT)	DC/AC/DCC
38	FC-2603005294	BELL B	DC/AC/DCC
39	DH-2603005004	CHASSIS A (DC)	DC/DCC
	DH-2603005011	CHASSIS A (AC)	AC
40	FC-2623005008	CYLINDER (LEFT)	DC/AC/DCC
41	FC-2603005115	SIDE STANCHION C (DOOR)	DC/AC/DCC
42	FC-2603005140	HANDRAIL B	DC/AC/DCC
43	CH-2643005001	LIGHT PCB COVER (REAR)	DC/AC/DCC
44	AG-2603001003	LIGHT PCB #1 (REAR)	DC/AC/DCC
45	DA-2623005005	CYLINDER BRAKE (LEFT)	DC/AC/DCC
46	DB-2603005005	BRAKE TANK PIPE	DC/AC/DCC
47	DB-2603005009	SPRING BRACKET	DC/AC/DCC
48	DB-2613005004	TRUCK SIDE FRAME (RIGHT)	DC/AC/DCC
49	BD-0003005001	PICK UP PLATE	DC/AC/DCC
50	DA-2613005005	CYLINDER BRAKE (RIGHT)	DC/AC/DCC
51	DD-2653005005	COUPLER WASH PLATE	DC/DCC
52	EH-2603005004	WORM SHAFT	DC/AC/DCC
53	EG-0003001000	WORM BEARING	DC/AC/DCC
54	ID-0003005001	WASHER	COMMON
55	EG-0023005005	GEAR BOX (LEFT)	DC/AC/DCC
56	DC-2603005001	WHEEL SHAFT	DC/AC/DCC
57	DC-2603005002	DC WHEEL	DC/DCC
	DC-2603005003	AC WHEEL	AC
58	DC-0003001000	GEAR(M0.5,12)	DC/AC/DCC
59	BI-0003005007	GEAR BOX COVER (BOTTOM)	DC/AC/DCC
60	EG-2603005003	DOUBLE GEAR(M0.5 T20/T14)	DC/AC/DCC
61	EG-2603005002	GEAR(M0.5,T15)	DC/AC/DCC
62	EH-2603005005	GEAR SHAFT	DC/AC/DCC
63	EH-2603005003	WORM	DC/AC/DCC
64	EH-2603005001	UNIVERSAL SHAFT (HEAD)	DC/AC/DCC
65	EH-2603005002	UNIVERSAL SHAFT	DC/AC/DCC
66	EG-2603005001	GEAR(M0.5,T11)	DC/AC/DCC
67	EG-0013005005	GEAR BOX (RIGHT)	DC/AC/DCC
68	IA-0003005003	SCREW	DC/AC/DCC
69	DB-2623005004	TRUCK SIDE FRAME (LEFT)	DC/AC/DCC
70	IH-2603005002	读数器管 A/Speed Recorders A	DC/AC/DCC
71	FC-2623005014	FUEL TANK (LEFT)	DC/AC/DCC
72	FC-2603005083	OIL TANK PIPE	DC/AC/DCC
73	FC-2613005013	FUEL TANK (RIGHT)	DC/AC/DCC
74	BF-0003005001	SPEAKER HOLDER	DC/AC/DCC
75	BF-0003001000	SPEAKER	DC

GP-35 CHASSIS LIST (NYC)

No.	Part No.	Description	Version
76	BF-0003005002	SPEAKER COVER	DC/AC/DCC
77		BUSH	
78		SCREW 2.0 X 7.0	COMMON
79	DD-2603000002	COUPLER BOX	DC/DCC
80	DD-2603000001	KADEE COUPLER	DC/DCC
81	DD-2603000003	COUPLER COVER	DC/DCC
82	DD-2653005004	COUPLER SPACER	DC/DCC
83	IA-0003005004	SCREW	COMMON
84	DD-2653005006	DRAFT BOX STRAP	DC/DCC
85	AG-2603001009	ELECTRIC COUPLER PCB	DC
86	DD-2603001000	COUPLER ASSY	DC
N.S	BC-2603001010	DC WIRE HARNESS SET (COMMO	DC
N.S	BC-2603001012	AC WIRE HARNESS SET (COMMO	AC
N.S	BC-2603001014	DCC WIRE HARNESS SET (COMM	DCC
N.S	BC-2603001016	30 PIN CONN W/ WIRE SERIES	AC / DC
N.S	BC-2603001018	5PIN CONN W/ WIRE SERIES	AC / DC / DCC
N.S	BC-2603001019	20 PIN CONN WIRE SERIES	DCC
N.S	BC-2603001020	COUPLER WIRE (FRONT)	AC / DC
N.S	BC-2603001021	COUPLER WIRE (REAR)	AC / DC
N.S	BC-2603001022	SPEAKER WIRE	AC / DC
N.S	BC-2603001023	MOTOR WIRE	AC / DC / DCC
N.S	BC-2603001024	TRUCK WIRE (FRONT)	AC / DC / DCC
N.S	BC-2603001025	TRUCK WIRE (REAR)	AC / DC
N.S	BC-2603001026	2 PIN CONN W/ WIRE SERIES FOR T	DCC
N.S	BC-2603001027	TACH BOARD WIRE	AC / DC
N.S	BC-2603001028	BLACK WIRE	AC

* Require Exchange

** Sold to MTH Service Centres Only

All Parts are priced as each and subject to change without notice

GP-35 CHASSIS LIST (EL)

No.	Part No.	Description	Version
1	AH-003001001	CONNECTION PCB	DC/AC/DCC
2	IA-0003001000	SCREW 2.0 X 5.0	COMMON
3	IA-0003005002	SCREW 2.6 X 13.0	COMMON
4	AE-2603CS0002	PS3.0 MAIN BOARD(NEW)	DC
	AE-2603000009	NMRA BOARD	DCC
	AE-2603000052	PS3.0 MAIN BOARD(NEW)	AC
5	IH-2603005001	MAIN PCB SUPPORT	DC/AC/DCC
6	AF-2603005001	VOLUME CONTROL & CAPACITANCE PCB-A	DC
7	DH-2603005017	WEIGHT	DC/AC/DCC
8	BE-2603001002	FLY WHEEL - BLACK	DC , AC
	BE-2603001002	FLY WHEEL - BLACK W/ WHITE ST	DC
	BE-2603001003	FLY WHEEL - BLACK	DCC
	BE-2603001004	FLY WHEEL - BLACK W/ WHITE ST	DCC
9		SCREW 1.2 X 5.5	COMMON
10			
11	AG-2600005001	TACH BOARD	DC/AC
12	BE-0003JC5001	MOTOR	DC/AC/DCC
	BE-0003JC5002	MOTOR ASSY SET	DC
	BE-0003JC5003	MOTOR ASSY SET	AC
	BE-0003JC5004	MOTOR ASSY SET	DCC
13	BI-0003005019	MOTOR SUPPORT	DC/AC/DCC
14	BI-0003005020	MOTOR ABSORBER	DC/AC/DCC
15	FC-2603005105	SIDE STANCHION B (DOOR)	DC/AC/DCC
16	FC-2603005130	HANDRAIL A	DC/AC/DCC
17	AG-2603001001	LIGHT PCB #1 (FRONT)	DC/AC/DCC
18	CH-2633005001	LIGHT PCB COVER-1 (FRONT)	DC/AC/DCC
19	FC-2683005003	HANDRAIL (FRONT) (RIGHT)	DC/AC/DCC
20	FC-2603005121	SIDE STANCHION D (DOOR)	DC/AC/DCC
21	CH-2603005006	LIGHT DOME (CAB)	DC/AC/DCC
22	FC-2633005003	HANDRAIL A (FRONT)	DC/AC/DCC
23	FG-2603005019	SIDE STEP C	DC/AC/DCC
24	FG-2603005011	SIDE STEP B	DC/AC/DCC
25	FG-2603005003	SIDE STEP A	DC/AC/DCC
26	FC-2663005011	HANDRAIL B (F&R)	DC/AC/DCC
27	FC-2643005003	GRABRAIL (REAR)	DC/AC/DCC
28	DG-2603005033	LIFT BAR (PILOT)	DC/AC/DCC
29	DG-2603005049	AIR HOSE	DC/AC/DCC
30	DG-2633005003	FOOTBOARD (PILOT)	DC/AC/DCC
31	DG-2603005041	PIPE	DC/AC/DCC
32	FC-2663005003	HANDRAIL A (F&R)	DC/AC/DCC
33	DG-2603005018	RUNNING BOARD (DC)	DC/DCC
	DG-2603005025	RUNNING BOARD (AC)	AC
34	FC-2603005097	SIDE STANCHION A (DOOR)	DC/AC/DCC

No.	Part No.	Description	Version
35	FC-2673005003	HANDRAIL (FRONT) (LEFT)	DC/AC/DCC
36	FC-2603005069	AIR VALVE A	DC/AC/DCC
37	FC-2613005005	CYLINDER (RIGHT)	DC/AC/DCC
38	FC-2603005292	BELL B	DC/AC/DCC
39	DH-2603005002	CHASSIS A (DC)	DC/DCC
	DH-2603005009	CHASSIS A (AC)	AC
40	FC-2623005006	CYLINDER (LEFT)	DC/AC/DCC
41	FC-2603005113	SIDE STANCHION C (DOOR)	DC/AC/DCC
42	FC-2603005138	HANDRAIL B	DC/AC/DCC
43	CH-2643005001	LIGHT PCB COVER (REAR)	DC/AC/DCC
44	AG-2603001003	LIGHT PCB #1 (REAR)	DC/AC/DCC
45	DA-2623005003	CYLINDER BRAKE (LEFT)	DC/AC/DCC
46	DB-2603005003	BRAKE TANK PIPE	DC/AC/DCC
47	DB-2603005009	SPRING BRACKET	DC/AC/DCC
48	DB-2613005002	TRUCK SIDE FRAME (RIGHT)	DC/AC/DCC
49	BD-0003005001	PICK UP PLATE	DC/AC/DCC
50	DA-2613005003	CYLINDER BRAKE (RIGHT)	DC/AC/DCC
51	DD-2653005005	COUPLER WASH PLATE	DC/DCC
52	EH-2603005004	WORM SHAFT	DC/AC/DCC
53	EG-0003001000	WORM BEARING	DC/AC/DCC
54	ID-0003005001	WASHER	COMMON
55	EG-0023005003	GEAR BOX (LEFT)	DC/AC/DCC
56	DC-2603005001	WHEEL SHAFT	DC/AC/DCC
57	DC-2603005002	DC WHEEL	DC/DCC
	DC-2603005003	AC WHEEL	AC
58	DC-0003001000	GEAR(M0.5,12)	DC/AC/DCC
59	BI-0003005005	GEAR BOX COVER (BOTTOM)	DC/AC/DCC
60	EG-2603005003	DOUBLE GEAR(M0.5 T20/T14)	DC/AC/DCC
61	EG-2603005002	GEAR(M0.5,T15)	DC/AC/DCC
62	EH-2603005005	GEAR SHAFT	DC/AC/DCC
63	EH-2603005003	WORM	DC/AC/DCC
64	EH-2603005001	UNIVERSAL SHAFT (HEAD)	DC/AC/DCC
65	EH-2603005002	UNIVERSAL SHAFT	DC/AC/DCC
66	EG-2603005001	GEAR(M0.5,T11)	DC/AC/DCC
67	EG-0013005003	GEAR BOX (RIGHT)	DC/AC/DCC
68	IA-0003005003	SCREW	DC/AC/DCC
69	DB-2623005002	TRUCK SIDE FRAME (LEFT)	DC/AC/DCC
70	IH-2603005002	读数器管 A/Speed Recorders A	DC/AC/DCC
71	FC-2623005013	FUEL TANK (LEFT)	DC/AC/DCC
72	FC-2603005081	OIL TANK PIPE	DC/AC/DCC
73	FC-2613005017	FUEL TANK (RIGHT)	DC/AC/DCC
74	BF-0003005001	SPEAKER HOLDER	DC/AC/DCC
75	BF-0003001000	SPEAKER	DC

GP-35 CHASSIS LIST (EL)

No.	Part No.	Description	Version /Road Name
76	BF-0003005002	SPEAKER COVER	DC/AC/DCC
78		BUSH	DC/AC/DCC
79	DD-2603000002	COUPLER BOX	DC/DCC
80	DD-2603000001	KADEE COUPLER	DC/DCC
81	DD-2603000003	COUPLER COVER	DC/DCC
82	DD-2653005004	COUPLER SPACER	DC/DCC
83	IA-0003005004	SCREW	COMMON
84	DD-2653005006	DRAFT BOX STRAP	DC/DCC
85	AG-2603001009	ELECTRIC COUPLER PCB	DC
86	DD-2603001000	COUPLER ASSY	DC
N.S	BC-2603001010	DC WIRE HARNESS SET (COMMO	DC
N.S	BC-2603001012	AC WIRE HARNESS SET (COMMO	AC
N.S	BC-2603001014	DCC WIRE HARNESS SET (COMM	DCC
N.S	BC-2603001016	30 PIN CONN W/ WIRE SERIES	DC/ AC
N.S	BC-2603001018	5PIN CONN W/ WIRE SERIES	DC/AC/DCC
N.S	BC-2603001019	20 PIN CONN WIRE SERIES	DCC
N.S	BC-2603001020	COUPLER WIRE (FRONT)	DC/ AC
N.S	BC-2603001021	COUPLER WIRE (REAR)	DC/ AC
N.S	BC-2603001022	SPEAKER WIRE	DC/ AC
N.S	BC-2603001023	MOTOR WIRE	DC/AC/DCC
N.S	BC-2603001024	TRUCK WIRE (FRONT)	DC/AC/DCC
N.S	BC-2603001025	TRUCK WIRE (REAR)	DC/ AC
N.S	BC-2603001026	2 PIN CONN W/ WIRE SERIES FOR T	DCC
N.S	BC-2603001027	TACH BOARD WIRE	DC/ AC
N.S	BC-2603001028	BLACK WIRE	AC

* Require Exchange

** Sold to MTH Service Centres Only

All Parts are priced as each and subject to change without notice

GP-35 CHASSIS LIST (N&W)

No.	Part No.	Description	Version
1	AH-003001001	CONNECTION PCB	DC/AC/DCC
2	IA-0003001000	SCREW 2.0 X 5.0	COMMON
3	IA-0003005002	SCREW 2.6 X 13.0	COMMON
4	AE-2603CS0002	PS3.0 MAIN BOARD(NEW)	DC
	AE-2603000009	NMRA BOARD	DCC
	AE-2603000052	PS3.0 MAIN BOARD(NEW)	AC
5	IH-2603005001	MAIN PCB SUPPORT	DC/AC/DCC
6	AF-2603005001	VOLUME CONTROL & CAPACITANCE PCB-A	DC
7	DH-2603005018	WEIGHT	DC/AC/DCC
8	BE-2603001002	FLY WHEEL - BLACK	DC , AC
	BE-2603001002	FLY WHEEL - BLACK W/ WHITE STE	DC
	BE-2603001003	FLY WHEEL - BLACK	DCC
	BE-2603001004	FLY WHEEL - BLACK W/ WHITE STE	DCC
9		SCREW 1.2 X 5.5	COMMON
10	FG-2603005033	TOOLBOX	DC/AC/DCC
11	AG-2600005001	TACH BOARD	AC / DC
12	BE-0003JC5001	MOTOR	DC/AC/DCC
	BE-0003JC5002	MOTOR ASSY SET	DC
	BE-0003JC5003	MOTOR ASSY SET	AC
	BE-0003JC5004	MOTOR ASSY SET	DCC
13	BI-0003005019	MOTOR SUPPORT	DC/AC/DCC
14	BI-0003005020	MOTOR ABSORBER	DC/AC/DCC
15	FC-2603005098	SIDE STANCHION A (DOOR)	DC/AC/DCC
16	FC-2603005131	HANDRAIL A	DC/AC/DCC
17	AG-2603001001	LIGHT PCB #1 (FRONT)	DC/AC/DCC
18	CH-2633005001	LIGHT PCB COVER-1 (FRONT)	DC/AC/DCC
19	FC-2683005004	HANDRAIL (FRONT) (RIGHT)	DC/AC/DCC
20	FC-2603005122	SIDE STANCHION D (DOOR)	DC/AC/DCC
21	CH-2603005006	LIGHT DOME (CAB)	DC/AC/DCC
22	FC-2633005004	HANDRAIL A (FRONT)	DC/AC/DCC
23	FG-2603005020	SIDE STEP C	DC/AC/DCC
24	FG-2603005012	SIDE STEP B	DC/AC/DCC
25	FG-2603005004	SIDE STEP A	DC/AC/DCC
26	FC-2663005012	HANDRAIL B (F&R)	DC/AC/DCC
27	FC-2643005004	GRABRAIL (REAR)	DC/AC/DCC
28	DG-2603005034	LIFT BAR (PILOT)	DC/AC/DCC
29	DG-2603005050	AIR HOSE	DC/AC/DCC
30	DG-2633005004	FOOTBOARD (PILOT)	DC/AC/DCC
31	DG-2603005042	PIPE	DC/AC/DCC
32	FC-2663005004	HANDRAIL A (F&R)	DC/AC/DCC
33	DG-2603005021	RUNNING BOARD (DC)	DC/DCC
	DG-2603005028	RUNNING BOARD (AC)	AC
34	FC-2603005106	SIDE STANCHION B (DOOR)	DC/AC/DCC

No.	Part No.	Description	Version
35	FC-2673005004	HANDRAIL (FRONT) (LEFT)	DC/AC/DCC
36	FC-2603005074	AIR VALVE C	DC/AC/DCC
37	FC-2613005006	CYLINDER (RIGHT)	DC/AC/DCC
38	FC-2603005293	BELL B	DC/AC/DCC
39	DH-2603005003	CHASSIS A (DC)	DC/DCC
	DH-2603005010	CHASSIS A (AC)	AC
40	FC-2623005007	CYLINDER (LEFT)	DC/AC/DCC
41	FC-2603005114	SIDE STANCHION C (DOOR)	DC/AC/DCC
42	FC-2603005139	HANDRAIL B	DC/AC/DCC
43	CH-2643005001	LIGHT PCB COVER (REAR)	DC/AC/DCC
44	AG-2603001003	LIGHT PCB #1 (REAR)	DC/AC/DCC
45	DA-2623005004	CYLINDER BRAKE (LEFT)	DC/AC/DCC
46	DB-2603005004	BRAKE TANK PIPE	DC/AC/DCC
47	DB-2603005009	SPRING BRACKET	DC/AC/DCC
48	DB-2613005003	TRUCK SIDE FRAME (RIGHT)	DC/AC/DCC
49	BD-0003005001	PICK UP PLATE	DC/AC/DCC
50	DA-2613005004	CYLINDER BRAKE (RIGHT)	DC/AC/DCC
51	DD-2653005005	COUPLER WASH PLATE	DC/DCC
52	EH-2603005004	WORM SHAFT	DC/AC/DCC
53	EG-0003001000	WORM BEARING	DC/AC/DCC
54	ID-0003005001	WASHER	COMMON
55	EG-0023005004	GEAR BOX (LEFT)	DC/AC/DCC
56	DC-2603005001	WHEEL SHAFT	DC/AC/DCC
57	DC-2603005002	DC WHEEL	DC/DCC
	DC-2603005003	AC WHEEL	AC
58	DC-0003001000	GEAR(M0.5,12)	DC/AC/DCC
59	BI-0003005006	GEAR BOX COVER (BOTTOM)	DC/AC/DCC
60	EG-2603005003	DOUBLE GEAR(M0.5 T20/T14)	DC/AC/DCC
61	EG-2603005002	GEAR(M0.5,T15)	DC/AC/DCC
62	EH-2603005005	GEAR SHAFT	DC/AC/DCC
63	EH-2603005003	WORM	DC/AC/DCC
64	EH-2603005001	UNIVERSAL SHAFT (HEAD)	DC/AC/DCC
65	EH-2603005002	UNIVERSAL SHAFT	DC/AC/DCC
66	EG-2603005001	GEAR(M0.5,T11)	DC/AC/DCC
67	EG-0013005004	GEAR BOX (RIGHT)	DC/AC/DCC
68	IA-0003005003	SCREW	COMMON
69	DB-2623005003	TRUCK SIDE FRAME (LEFT)	DC/AC/DCC
70	IH-2603005002	读数器管 A/Speed Recorders A	DC/AC/DCC
71	FC-2623005016	FUEL TANK (LEFT)	DC/AC/DCC
72	FC-2603005082	OIL TANK PIPE	DC/AC/DCC
73	FC-2613005012	FUEL TANK (RIGHT)	DC/AC/DCC
74	BF-0003005001	SPEAKER HOLDER	DC/AC/DCC
75	BF-0003001000	SPEAKER	DC

GP-35 CHASSIS LIST (N&W)

No.	Part No.	Description	ersion /Road Name
76	BF-0003005002	SPEAKER COVER	DC/AC/DCC
77		BUSH	DC/AC/DCC
78		SCREW 2.0 X 7.0	COMMON
79	DD-2603000002	COUPLER BOX	DC/DCC
80	DD-2603000001	KADEE COUPLER	DC/DCC
81	DD-2603000003	COUPLER COVER	DC/DCC
82	DD-2653005004	COUPLER SPACER	DC/DCC
83	IA-0003005004	SCREW	COMMON
84	DD-2653005006	DRAFT BOX STRAP	DC/DCC
85	AG-2603001009	ELECTRIC COUPLER PCB	DC
86	DD-2603001000	COUPLER ASSY	DC
N.S	BC-2603001010	DC WIRE HARNESS SET (COMMO	DC
N.S	BC-2603001012	AC WIRE HARNESS SET (COMMO	AC
N.S	BC-2603001014	DCC WIRE HARNESS SET (COMM	DCC
N.S	BC-2603001016	30 PIN CONN W/ WIRE SERIES	DC/AC
N.S	BC-2603001018	5PIN CONN W/ WIRE SERIES	DC/AC/DCC
N.S	BC-2603001019	20 PIN CONN WIRE SERIES	DCC
N.S	BC-2603001020	COUPLER WIRE (FRONT)	DC/AC
N.S	BC-2603001021	COUPLER WIRE (REAR)	DC/AC
N.S	BC-2603001022	SPEAKER WIRE	DC/AC
N.S	BC-2603001023	MOTOR WIRE	DC/AC/DCC
N.S	BC-2603001024	TRUCK WIRE (FRONT)	DC/AC/DCC
N.S	BC-2603001025	TRUCK WIRE (REAR)	DC/AC
N.S	BC-2603001026	2 PIN CONN W/ WIRE SERIES FOR T	DCC
N.S	BC-2603001027	TACH BOARD WIRE	DC/AC
N.S	BC-2603001028	BLACK WIRE	AC

* Require Exchange

** Sold to MTH Service Centres Only

All Parts are priced as each and subject to change without notice

GP-35 CHASSIS LIST (UP)

No.	Part No.	Description	Version
1	AH-003001001	CONNECTION PCB	DC/AC/DCC
2	IA-0003001000	SCREW 2.0 X 5.0	COMMON
3	IA-0003005002	SCREW 2.6 X 13.0	COMMON
4	AE-2603CS0002	PS3.0 MAIN BOARD(NEW)	DC
	AE-2603000009	NMRA BOARD	DCC
	AE-2603000052	PS3.0 MAIN BOARD(NEW)	AC
5	IH-2603005001	MAIN PCB SUPPORT	DC/AC/DCC
6	AF-2603005001	VOLUME CONTROL & CAPACITANCE PCB-A	DC
7	DH-2603005022	WEIGHT	DC/AC/DCC
8	BE-2603001002	FLY WHEEL - BLACK	DC , AC
	BE-2603001002	FLY WHEEL - BLACK W/ WHITE STE	DC
	BE-2603001003	FLY WHEEL - BLACK	DCC
	BE-2603001004	FLY WHEEL - BLACK W/ WHITE STE	DCC
9		SCREW 1.2 X 5.5	COMMON
10			
11	AG-2600005001	TACH BOARD	DC/AC
12	BE-0003JC5001	MOTOR	DC/AC/DCC
	BE-0003JC5002	MOTOR ASSY SET	DC
	BE-0003JC5003	MOTOR ASSY SET	AC
	BE-0003JC5004	MOTOR ASSY SET	DCC
13	BI-0003005019	MOTOR SUPPORT	DC/AC/DCC
14	BI-0003005020	MOTOR ABSORBER	DC/AC/DCC
15	FC-2603005110	SIDE STANCHION B (DOOR)	DC/AC/DCC
16	FC-2603005135	HANDRAIL A	DC/AC/DCC
17	AG-2603001001	LIGHT PCB #1 (FRONT)	DC/AC/DCC
18	CH-2633005001	LIGHT PCB COVER-1 (FRONT)	DC/AC/DCC
19	FC-2683005008	HANDRAIL (FRONT) (RIGHT)	DC/AC/DCC
20	FC-2603005126	SIDE STANCHION D (DOOR)	DC/AC/DCC
21	CH-2603005006	LIGHT DOME (CAB)	DC/AC/DCC
22	FC-2633005007	HANDRAIL B (FRONT)	DC/AC/DCC
23	FG-2603005024	SIDE STEP C	DC/AC/DCC
24	FG-2603005016	SIDE STEP B	DC/AC/DCC
25	FG-2603005008	SIDE STEP A	DC/AC/DCC
26	FC-2663005016	HANDRAIL B (F&R)	DC/AC/DCC
27	FC-2643005008	GRABRAIL (REAR)	DC/AC/DCC
28	DG-2603005038	LIFT BAR (PILOT)	DC/AC/DCC
29	DG-2603005054	AIR HOSE	DC/AC/DCC
30	DG-2633005008	FOOTBOARD (PILOT)	DC/AC/DCC
31	DG-2603005046	PIPE	DC/AC/DCC
32	FC-2663005008	HANDRAIL A (F&R)	DC/AC/DCC
33	DG-2603005023	RUNNING BOARD (DC)	DC/DCC
	DG-2603005030	RUNNING BOARD (AC)	AC
34	FC-2603005102	SIDE STANCHION A (DOOR)	DC/AC/DCC

No.	Part No.	Description	Version
35	FC-2673005008	HANDRAIL (FRONT) (LEFT)	DC/AC/DCC
36	FC-2603005076	AIR VALVE C	DC/AC/DCC
37	FC-2613005010	CYLINDER (RIGHT)	DC/AC/DCC
38	FC-2603005296	BELL B	DC/AC/DCC
39	DH-2603005007	CHASSIS A (DC)	DC/DCC
	DH-2603005014	CHASSIS A (AC)	AC
40	FC-2623005011	CYLINDER (LEFT)	DC/AC/DCC
41	FC-2603005118	SIDE STANCHION C (DOOR)	DC/AC/DCC
42	FC-2603005143	HANDRAIL B	DC/AC/DCC
43	CH-2643005001	LIGHT PCB COVER (REAR)	DC/AC/DCC
44	AG-2603001003	LIGHT PCB #1 (REAR)	DC/AC/DCC
45	DA-2623005008	CYLINDER BRAKE (LEFT)	DC/AC/DCC
46	DB-2603005008	BRAKE TANK PIPE	DC/AC/DCC
47	DB-2603005009	SPRING BRACKET	DC/AC/DCC
48	DB-2613005008	TRUCK SIDE FRAME (RIGHT)	DC/AC/DCC
49	BD-0003005001	PICK UP PLATE	DC/AC/DCC
50	DA-2613005008	CYLINDER BRAKE (RIGHT)	DC/AC/DCC
51	DD-2653005005	COUPLER WASH PLATE	DC/DCC
52	EH-2603005004	WORM SHAFT	DC/AC/DCC
53	EG-0003001000	WORM BEARING	DC/AC/DCC
54	ID-0003005001	WASHER	COMMON
55	EG-0023005008	GEAR BOX (LEFT)	DC/AC/DCC
56	DC-2603005001	WHEEL SHAFT	DC/AC/DCC
57	DC-2603005002	DC WHEEL	DC/DCC
	DC-2603005003	AC WHEEL	AC
58	DC-0003001000	GEAR(M0.5,12)	DC/AC/DCC
59	BI-0003005010	GEAR BOX COVER (BOTTOM)	DC/AC/DCC
60	EG-2603005003	DOUBLE GEAR(M0.5 T20/T14)	DC/AC/DCC
61	EG-2603005002	GEAR(M0.5,T15)	DC/AC/DCC
62	EH-2603005005	GEAR SHAFT	DC/AC/DCC
63	EH-2603005003	WORM	DC/AC/DCC
64	EH-2603005001	UNIVERSAL SHAFT (HEAD)	DC/AC/DCC
65	EH-2603005002	UNIVERSAL SHAFT	DC/AC/DCC
66	EG-2603005001	GEAR(M0.5,T11)	DC/AC/DCC
67	EG-0013005008	GEAR BOX (RIGHT)	DC/AC/DCC
68	IA-0003005003	SCREW	DC/AC/DCC
69	DB-2623005008	TRUCK SIDE FRAME (LEFT)	DC/AC/DCC
70	IH-2603005003	SPEED RECORDERS B	DC/AC/DCC
71	FC-2623005018	FUEL TANK (LEFT)	DC/AC/DCC
72	FC-2603005086	OIL TANK PIPE	DC/AC/DCC
73	FC-2613005016	FUEL TANK (RIGHT)	DC/AC/DCC
74	BF-0003005001	SPEAKER HOLDER	DC/AC/DCC
75	BF-0003001000	SPEAKER	DC

GP-35 CHASSIS LIST (UP)

No.	Part No.	Description	ersion /Road Name
76	BF-0003005002	SPEAKER COVER	DC/AC/DCC
77		BUSH	
78		SCREW 2.0 X 7.0	COMMON
79	DD-2603000002	COUPLER BOX	DC/DCC
80	DD-2603000001	KADEE COUPLER	DC/DCC
81	DD-2603000003	COUPLER COVER	DC/DCC
82	DD-2653005004	COUPLER SPACER	DC/DCC
83	IA-0003005004	SCREW	COMMON
84	DD-2653005006	DRAFT BOX STRAP	DC/DCC
85	AG-2603001009	ELECTRIC COUPLER PCB	DC
86	DD-2603001000	COUPLER ASSY	DC
N.S	BC-2603001010	DC WIRE HARNESS SET (COMMO	DC
N.S	BC-2603001012	AC WIRE HARNESS SET (COMMO	AC
N.S	BC-2603001014	DCC WIRE HARNESS SET (COMM	DCC
N.S	BC-2603001016	30 PIN CONN W/ WIRE SERIES	DC/AC
N.S	BC-2603001018	5PIN CONN W/ WIRE SERIES	DC/AC/DCC
N.S	BC-2603001019	20 PIN CONN WIRE SERIES	DCC
N.S	BC-2603001020	COUPLER WIRE (FRONT)	DC/AC
N.S	BC-2603001021	COUPLER WIRE (REAR)	DC/AC
N.S	BC-2603001022	SPEAKER WIRE	DC/AC
N.S	BC-2603001023	MOTOR WIRE	DC/AC/DCC
N.S	BC-2603001024	TRUCK WIRE (FRONT)	DC/AC/DCC
N.S	BC-2603001025	TRUCK WIRE (REAR)	DC/AC
N.S	BC-2603001026	2 PIN CONN W/ WIRE SERIES FOR T	DCC
N.S	BC-2603001027	TACH BOARD WIRE	DC/AC
N.S	BC-2603001028	BLACK WIRE	AC

* Require Exchange

** Sold to MTH Service Centres Only

All Parts are priced as each and subject to change without notice

GP-35 CHASSIS LIST (SP)

No.	Part No.	Description	Version
1	AH-003001001	CONNECTION PCB	DC/AC/DCC
2	IA-0003001000	SCREW 2.0 X 5.0	COMMON
3	IA-0003005002	SCREW 2.6 X 13.0	COMMON
4	AE-2603CS0002	PS3.0 MAIN BOARD(NEW)	DC
	AE-2603000009	NMRA BOARD	DCC
	AE-2603000052	PS3.0 MAIN BOARD(NEW)	AC
5	IH-2603005001	MAIN PCB SUPPORT	DC/AC/DCC
6	AF-2603005002	VOLUME CONTROL & CAPACITANCE PCB-B	AC
7	DH-2603005021	WEIGHT	DC/AC/DCC
8	BE-2603001002	FLY WHEEL - BLACK	DC , AC
	BE-2603001002	FLY WHEEL - BLACK W/ WHITE ST	DC
	BE-2603001003	FLY WHEEL - BLACK	DCC
	BE-2603001004	FLY WHEEL - BLACK W/ WHITE ST	DCC
9		SCREW 1.2 X 5.5	COMMON
10			
11	AG-2600005001	TACH BOARD	DC/AC
12	BE-0003JC5001	MOTOR	DC/AC/DCC
	BE-0003JC5002	MOTOR ASSY SET	DC
	BE-0003JC5003	MOTOR ASSY SET	AC
	BE-0003JC5004	MOTOR ASSY SET	DCC
13	BI-0003005019	MOTOR SUPPORT	DC/AC/DCC
14	BI-0003005020	MOTOR ABSORBER	DC/AC/DCC
15	FC-2603005109	SIDE STANCHION B (DOOR)	DC/AC/DCC
16	FC-2603005134	HANDRAIL A	DC/AC/DCC
17	AG-2603001002	LIGHT PCB #2 (FRONT)	DC/AC/DCC
18	CH-2633005002	LIGHT PCB COVER-2 (FRONT)	DC/AC/DCC
19	FC-2683005007	HANDRAIL (FRONT) (RIGHT)	DC/AC/DCC
20	FC-2603005125	SIDE STANCHION D (DOOR)	DC/AC/DCC
21	CH-2603005006	LIGHT DOME (CAB)	DC/AC/DCC
22	FC-2633005006	HANDRAIL A (FRONT)	DC/AC/DCC
23	FG-2603005023	SIDE STEP C	DC/AC/DCC
24	FG-2603005015	SIDE STEP B	DC/AC/DCC
25	FG-2603005007	SIDE STEP A	DC/AC/DCC
26	FC-2663005015	HANDRAIL B (F&R)	DC/AC/DCC
27	FC-2643005007	GRABRAIL (REAR)	DC/AC/DCC
28	DG-2603005037	LIFT BAR (PILOT)	DC/AC/DCC
29	DG-2603005053	AIR HOSE	DC/AC/DCC
30	DG-2633005007	FOOTBOARD (PILOT)	DC/AC/DCC
31	DG-2603005045	PIPE	DC/AC/DCC
32	FC-2663005007	HANDRAIL A (F&R)	DC/AC/DCC
33	DG-2603005020	RUNNING BOARD (DC)	DC/DCC
	DG-2603005027	RUNNING BOARD (AC)	AC
34	FC-2603005101	SIDE STANCHION A (DOOR)	DC/AC/DCC

No.	Part No.	Description	Version
35	FC-2673005007	HANDRAIL (FRONT) (LEFT)	DC/AC/DCC
36	FC-2603005071	AIR VALVE A	DC/AC/DCC
37	FC-2613005009	CYLINDER (RIGHT)	DC/AC/DCC
38			
39	DH-2603005006	CHASSIS A (DC)	DC/DCC
	DH-2603005013	CHASSIS A (AC)	AC
40	FC-2623005010	CYLINDER (LEFT)	DC/AC/DCC
41	FC-2603005117	SIDE STANCHION C (DOOR)	DC/AC/DCC
42	FC-2603005142	HANDRAIL B	DC/AC/DCC
43	CH-2643005001	LIGHT PCB COVER (REAR)	DC/AC/DCC
44	AG-2603001004	LIGHT PCB #2 (REAR)	DC/AC/DCC
45	DA-2623005007	CYLINDER BRAKE (LEFT)	DC/AC/DCC
46	DB-2603005007	BRAKE TANK PIPE	DC/AC/DCC
47	DB-2603005009	SPRING BRACKET	DC/AC/DCC
48	DB-2613005006	TRUCK SIDE FRAME (RIGHT)	DC/AC/DCC
49	BD-0003005001	PICK UP PLATE	DC/AC/DCC
50	DA-2613005007	CYLINDER BRAKE (RIGHT)	DC/AC/DCC
51	DD-2653005005	COUPLER WASH PLATE	DC/DCC
52	EH-2603005004	WORM SHAFT	DC/AC/DCC
53	EG-0003001000	WORM BEARING	DC/AC/DCC
54	ID-0003005001	WASHER	COMMON
55	EG-0023005007	GEAR BOX (LEFT)	DC/AC/DCC
56	DC-2603005001	WHEEL SHAFT	DC/AC/DCC
57	DC-2603005002	DC WHEEL	DC/DCC
	DC-2603005003	AC WHEEL	AC
58	DC-0003001000	GEAR(M0.5,12)	DC/AC/DCC
59	BI-0003005009	GEAR BOX COVER (BOTTOM)	DC/AC/DCC
60	EG-2603005003	DOUBLE GEAR(M0.5 T20/T14)	DC/AC/DCC
61	EG-2603005002	GEAR(M0.5,T15)	DC/AC/DCC
62			
63	EH-2603005003	WORM	DC/AC/DCC
64	EH-2603005001	UNIVERSAL SHAFT (HEAD)	DC/AC/DCC
65	EH-2603005002	UNIVERSAL SHAFT	DC/AC/DCC
66	EG-2603005001	GEAR(M0.5,T11)	DC/AC/DCC
67	EG-0013005007	GEAR BOX (RIGHT)	DC/AC/DCC
68	IA-0003005003	SCREW	DC/AC/DCC
69	DB-2623005006	TRUCK SIDE FRAME (LEFT)	DC/AC/DCC
70	IH-2603005002	SPEED RECORDERS A	DC/AC/DCC
71	FC-2623005015	FUEL TANK (LEFT)	DC/AC/DCC
72	FC-2603005085	OIL TANK PIPE	DC/AC/DCC
73	FC-2613005015	FUEL TANK (RIGHT)	DC/AC/DCC
74	BF-0003005001	SPEAKER HOLDER	DC/AC/DCC
75	BF-0003001000	SPEAKER	DC

GP-35 CHASSIS LIST (SP)

No.	Part No.	Description	Version
76	BF-0003005002	SPEAKER COVER	DC/AC/DCC
77		BUSH	
78		SCREW 2.0 X 7.0	COMMON
79	DD-2603000002	COUPLER BOX	DC/DCC
80	DD-2603000001	KADEE COUPLER	DC/DCC
81	DD-2603000003	COUPLER COVER	DC/DCC
82	DD-2653005004	COUPLER SPACER	DC/DCC
83	IA-0003005004	SCREW	DC
84	DD-2653005006	DRAFT BOX STRAP	DC/DCC
85	AG-2603001009	ELECTRIC COUPLER PCB	DC
86	DD-2603001000	COUPLER ASSY	DC
N.S	BC-2603001010	DC WIRE HARNESS SET (COMMO	DC
N.S	BC-2603001012	AC WIRE HARNESS SET (COMMO	AC
N.S	BC-2603001014	DCC WIRE HARNESS SET (COMM	DCC
N.S	BC-2603001017	30 PIN CONN W/ WIRE SERIES	DC/AC
N.S	BC-2603001018	5PIN CONN W/ WIRE SERIES	DC/AC/DCC
N.S	BC-2603001019	20 PIN CONN WIRE SERIES	DCC
N.S	BC-2603001020	COUPLER WIRE (FRONT)	DC/AC
N.S	BC-2603001021	COUPLER WIRE (REAR)	DC/AC
N.S	BC-2603001022	SPEAKER WIRE	DC/AC
N.S	BC-2603001023	MOTOR WIRE	DC/AC/DCC
N.S	BC-2603001024	TRUCK WIRE (FRONT)	DC/AC/DCC
N.S	BC-2603001025	TRUCK WIRE (REAR)	DC/AC
N.S	BC-2603001026	2 PIN CONN W/ WIRE SERIES FOR T	DCC
N.S	BC-2603001027	TACH BOARD WIRE	DC/AC
N.S	BC-2603001028	BLACK WIRE	AC

* Require Exchange

** Sold to MTH Service Centres Only

All Parts are priced as each and subject to change without notice

GP-35 CHASSIS LIST (SANTA FE)

No.	Part No.	Description	Version
1	AH-003001001	CONNECTION PCB	DC/AC/DCC
2	IA-0003001000	SCREW 2.0 X 5.0	COMMON
3	IA-0003005002	SCREW 2.6 X 13.0	COMMON
4	AE-2603CS0002	PS3.0 MAIN BOARD(NEW)	DC
	AE-2603000009	NMRA BOARD	DCC
	AE-2603000052	PS3.0 MAIN BOARD(NEW)	AC
5	IH-2603005001	MAIN PCB SUPPORT	DC/AC/DCC
6	AF-2603005001	VOLUME CONTROL & CAPACITANCE PCB-A	DC
7	DH-2603005015	WEIGHT	DC/AC/DCC
8	BE-2603001002	FLY WHEEL - BLACK	DC , AC
	BE-2603001002	FLY WHEEL - BLACK W/ WHITE STE	DC
	BE-2603001003	FLY WHEEL - BLACK	DCC
	BE-2603001004	FLY WHEEL - BLACK W/ WHITE STE	DCC
9		SCREW 1.2 X 5.5	COMMON
10	FC-2603005078	FUEL FILLERS	DC/AC/DCC
11	AG-2600005001	TACH BOARD	DC/AC
12	BE-0003JC5001	MOTOR	DC/AC/DCC
	BE-0003JC5002	MOTOR ASSY SET	DC
	BE-0003JC5003	MOTOR ASSY SET	AC
	BE-0003JC5004	MOTOR ASSY SET	DCC
13	BI-0003005019	MOTOR SUPPORT	DC/AC/DCC
14	BI-0003005020	MOTOR ABSORBER	DC/AC/DCC
15	FC-2603005103	SIDE STANCHION B (DOOR)	DC/AC/DCC
16	FC-2603005128	HANDRAIL A	DC/AC/DCC
17	AG-2603001001	LIGHT PCB #1 (FRONT)	DC/AC/DCC
18	CH-2633005001	LIGHT PCB COVER-1 (FRONT)	DC/AC/DCC
19	FC-2683005001	HANDRAIL (FRONT) (RIGHT)	DC/AC/DCC
20	FC-2603005119	SIDE STANCHION D (DOOR)	DC/AC/DCC
21	CH-2603005006	LIGHT DOME (CAB)	DC/AC/DCC
22	FC-2633005001	HANDRAIL A (FRONT)	DC/AC/DCC
23	FG-2603005017	SIDE STEP C	DC/AC/DCC
24	FG-2603005009	SIDE STEP B	DC/AC/DCC
25	FG-2603005001	SIDE STEP A	DC/AC/DCC
26	FC-2663005009	HANDRAIL B (F&R)	DC/AC/DCC
27	FC-2643005001	GRABRAIL (REAR)	DC/AC/DCC
28	DG-2603005031	LIFT BAR (PILOT)	DC/AC/DCC
29	DG-2603005047	AIR HOSE	DC/AC/DCC
30	DG-2633005001	FOOTBOARD (PILOT)	DC/AC/DCC
31	DG-2603005039	PIPE	DC/AC/DCC
32	FC-2663005001	HANDRAIL A (F&R)	DC/AC/DCC
33	DG-2603005055	RUNNING BOARD (DC)	DC/DCC
	DG-2603005056	RUNNING BOARD (AC)	AC
34	FC-2603005095	SIDE STANCHION A (DOOR)	DC/AC/DCC

No.	Part No.	Description	Version
35	FC-2673005001	HANDRAIL (FRONT) (LEFT)	DC/AC/DCC
36	FC-2603005072	AIR VALVE B	DC/AC/DCC
37	FC-2613005003	CYLINDER (RIGHT)	DC/AC/DCC
38	FC-2603005290	BELL B	DC/AC/DCC
39	DH-2603005023	CHASSIS B (DC)	DC/DCC
	DH-2603005024	CHASSIS B (AC)	AC
40	FC-2623005004	CYLINDER (LEFT)	DC/AC/DCC
41	FC-2603005111	SIDE STANCHION C (DOOR)	DC/AC/DCC
42	FC-2603005136	HANDRAIL B	DC/AC/DCC
43	CH-2643005001	LIGHT PCB COVER (REAR)	DC/AC/DCC
44	AG-2603001003	LIGHT PCB #1 (REAR)	DC/AC/DCC
45	DA-2623005001	CYLINDER BRAKE (LEFT)	DC/AC/DCC
46	DB-2603005001	BRAKE TANK PIPE	DC/AC/DCC
47	DB-2603005009	SPRING BRACKET	DC/AC/DCC
48	DB-2613005001	TRUCK SIDE FRAME (RIGHT)	DC/AC/DCC
49	BD-0003005001	PICK UP PLATE	DC/AC/DCC
50	DA-2613005001	CYLINDER BRAKE (RIGHT)	DC/AC/DCC
51	DD-2653005005	COUPLER WASH PLATE	DC/DCC
52	EH-2603005004	WORM SHAFT	DC/AC/DCC
53	EG-0003001000	WORM BEARING	DC/AC/DCC
54	ID-0003005001	WASHER	COMMON
55	EG-0023005001	GEAR BOX (LEFT)	DC/AC/DCC
56	DC-2603005001	WHEEL SHAFT	DC/AC/DCC
57	DC-2603005002	DC WHEEL	DC/DCC
	DC-2603005003	AC WHEEL	AC
58	DC-0003001000	GEAR(M0.5,12)	DC/AC/DCC
59	BI-0003005003	GEAR BOX COVER (BOTTOM)	DC/AC/DCC
60	EG-2603005003	DOUBLE GEAR(M0.5 T20/T14)	DC/AC/DCC
61	EG-2603005002	GEAR(M0.5,T15)	DC/AC/DCC
62	EH-2603005005	GEAR SHAFT	DC/AC/DCC
63	EH-2603005003	WORM	DC/AC/DCC
64	EH-2603005001	UNIVERSAL SHAFT (HEAD)	DC/AC/DCC
65	EH-2603005002	UNIVERSAL SHAFT	DC/AC/DCC
66	EG-2603005001	GEAR(M0.5,T11)	DC/AC/DCC
67	EG-0013005001	GEAR BOX (RIGHT)	DC/AC/DCC
68	IA-0003005003	SCREW	COMMON
69	DB-2623005001	TRUCK SIDE FRAME (LEFT)	DC/AC/DCC
70	IH-2603005002	SPEED RECORDERS A	DC/AC/DCC
71	FC-2623005003	FUEL TANK (LEFT)	DC/AC/DCC
72	FC-2603005079	OIL TANK PIPE	DC/AC/DCC
73	FC-2613005002	FUEL TANK (RIGHT)	DC/AC/DCC
74	BF-0003005001	SPEAKER HOLDER	DC/AC/DCC
75	BF-0003001000	SPEAKER	DC

GP-35 CHASSIS LIST (SANTA FE)

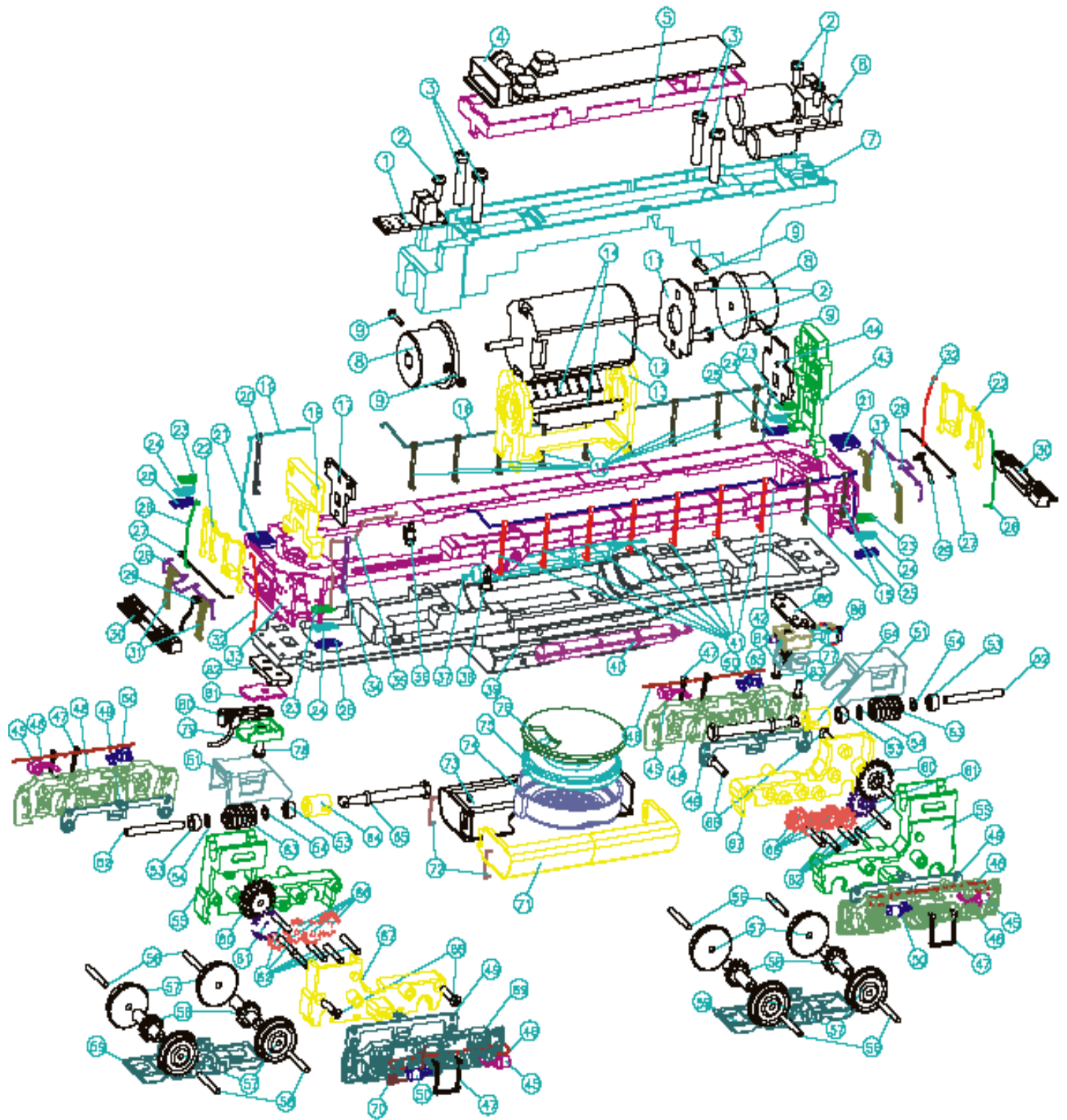
No.	Part No.	Description	Version
76	BF-0003005002	SPEAKER COVER	DC/AC/DCC
77		BUSH	
78		SCREW 2.0 X 7.0	COMMON
79	DD-2603000002	COUPLER BOX	DC/DCC
80	DD-2603000001	KADEE COUPLER	DC/DCC
81	DD-2603000003	COUPLER COVER	DC/DCC
82	DD-2653005004	COUPLER SPACER	DC/DCC
83	IA-0003005004	SCREW	COMMON
84	DD-2653005006	DRAFT BOX STRAP	DC/DCC
85	AG-2603001009	ELECTRIC COUPLER PCB	DC
86	DD-2603001000	COUPLER ASSY	DC
N.S	BC-2603001010	DC WIRE HARNESS SET (COMMO	DC
N.S	BC-2603001012	AC WIRE HARNESS SET (COMMO	AC
N.S	BC-2603001014	DCC WIRE HARNESS SET (COMM	DCC
N.S	BC-2603001016	30 PIN CONN W/ WIRE SERIES	DC/AC
N.S	BC-2603001018	5PIN CONN W/ WIRE SERIES	DC/AC/DCC
N.S	BC-2603001019	20 PIN CONN WIRE SERIES	DCC
N.S	BC-2603001020	COUPLER WIRE (FRONT)	DC/AC
N.S	BC-2603001021	COUPLER WIRE (REAR)	DC/AC
N.S	BC-2603001022	SPEAKER WIRE	DC/AC
N.S	BC-2603001023	MOTOR WIRE	DC/AC/DCC
N.S	BC-2603001024	TRUCK WIRE (FRONT)	DC/AC/DCC
N.S	BC-2603001025	TRUCK WIRE (REAR)	DC/AC
N.S	BC-2603001026	2 PIN CONN W/ WIRE SERIES FOR T	DCC
N.S	BC-2603001027	TACH BOARD WIRE	DC/AC
N.S	BC-2603001028	BLACK WIRE	AC

* Require Exchange

** Sold to MTH Service Centres Only

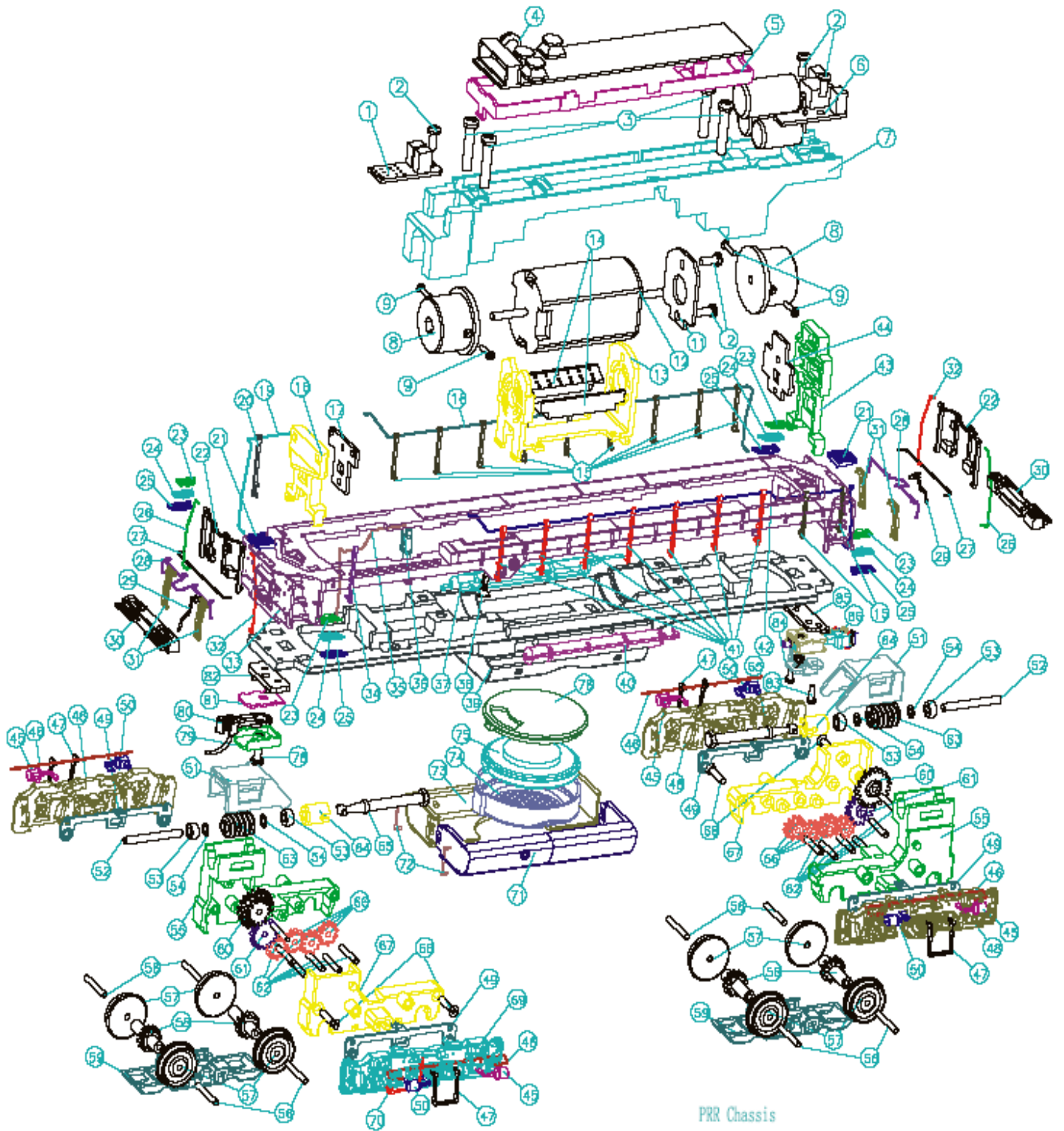
All Parts are priced as each and subject to change without notice

GP-35 CHASSIS EXPLODED VIEW (B&O)

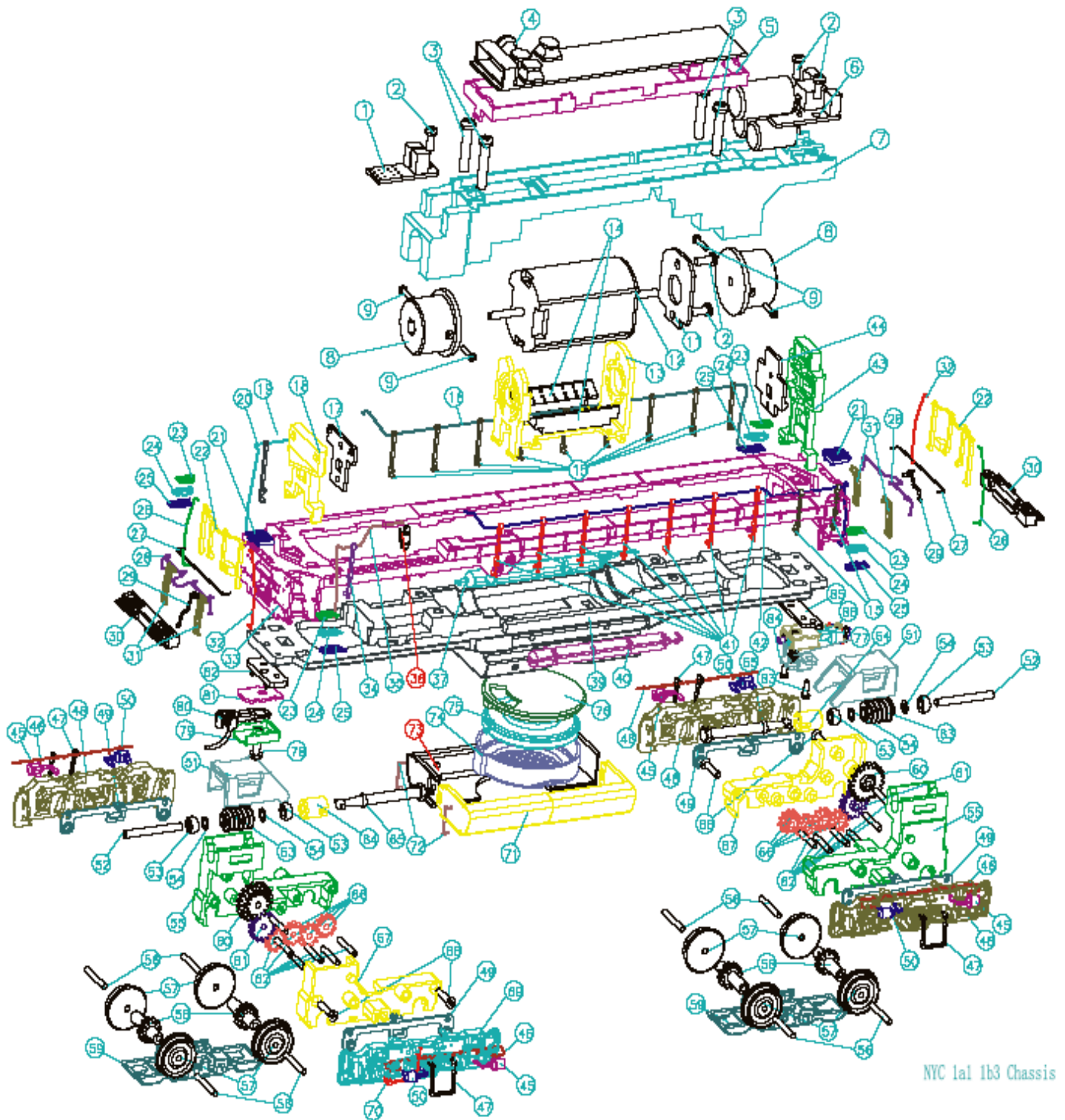


B&O CHASSIS

GP-35 CHASSIS EXPLODED VIEW (PRR)

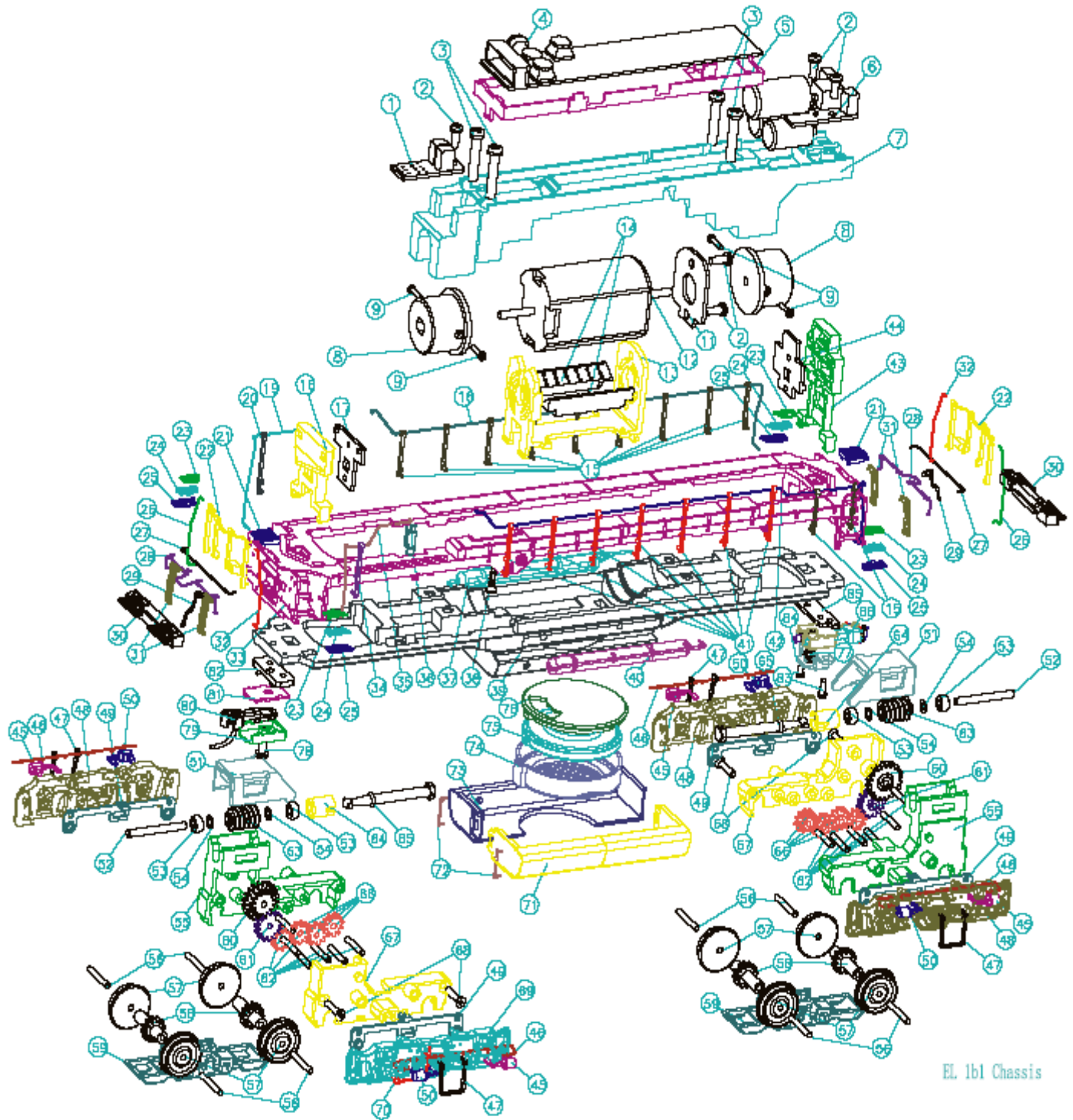


GP-35 CHASSIS EXPLODED VIEW (NYC)



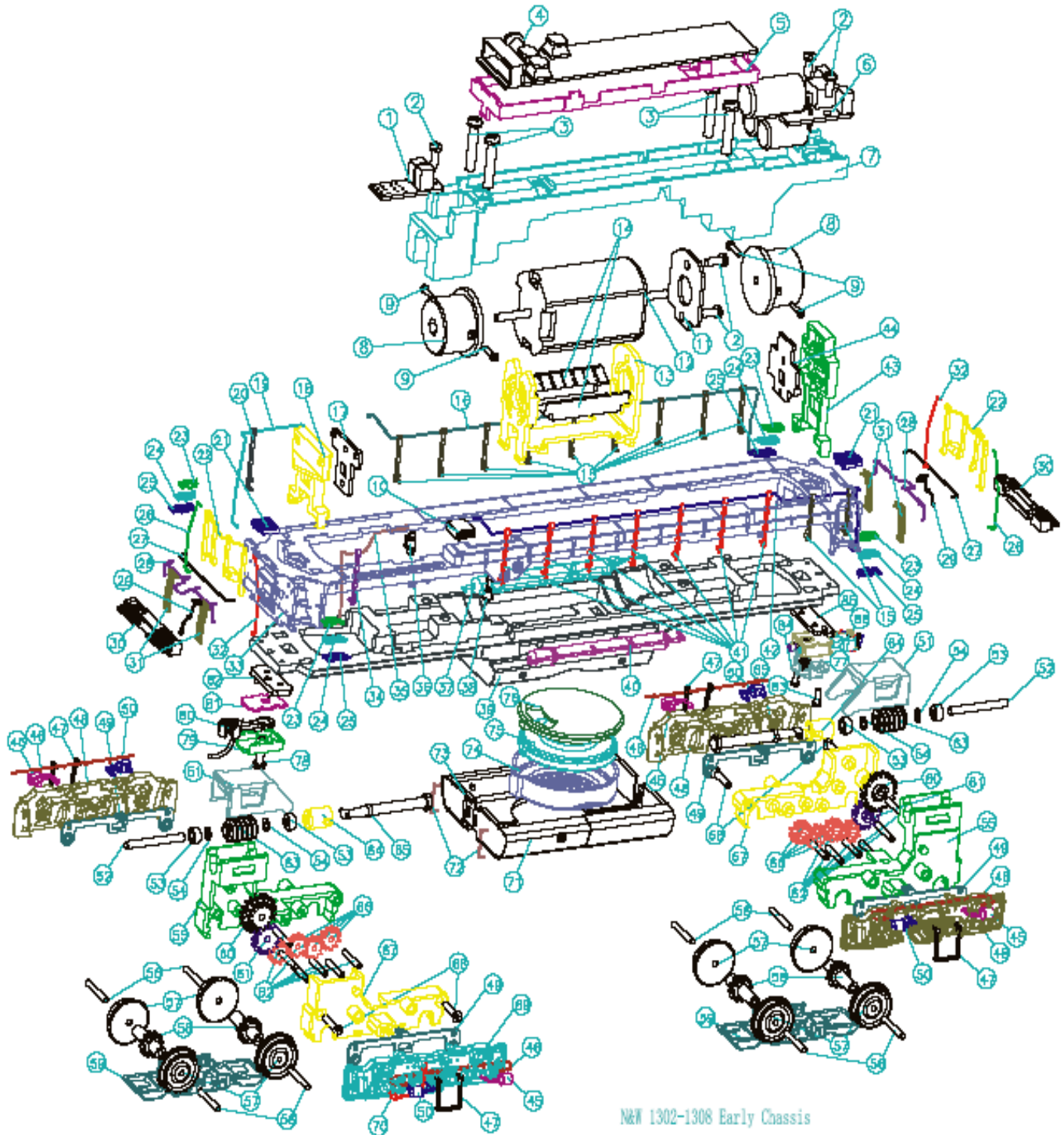
NYC 1a1 1b3 Chassis

GP-35 CHASSIS EXPLODED VIEW (EL)



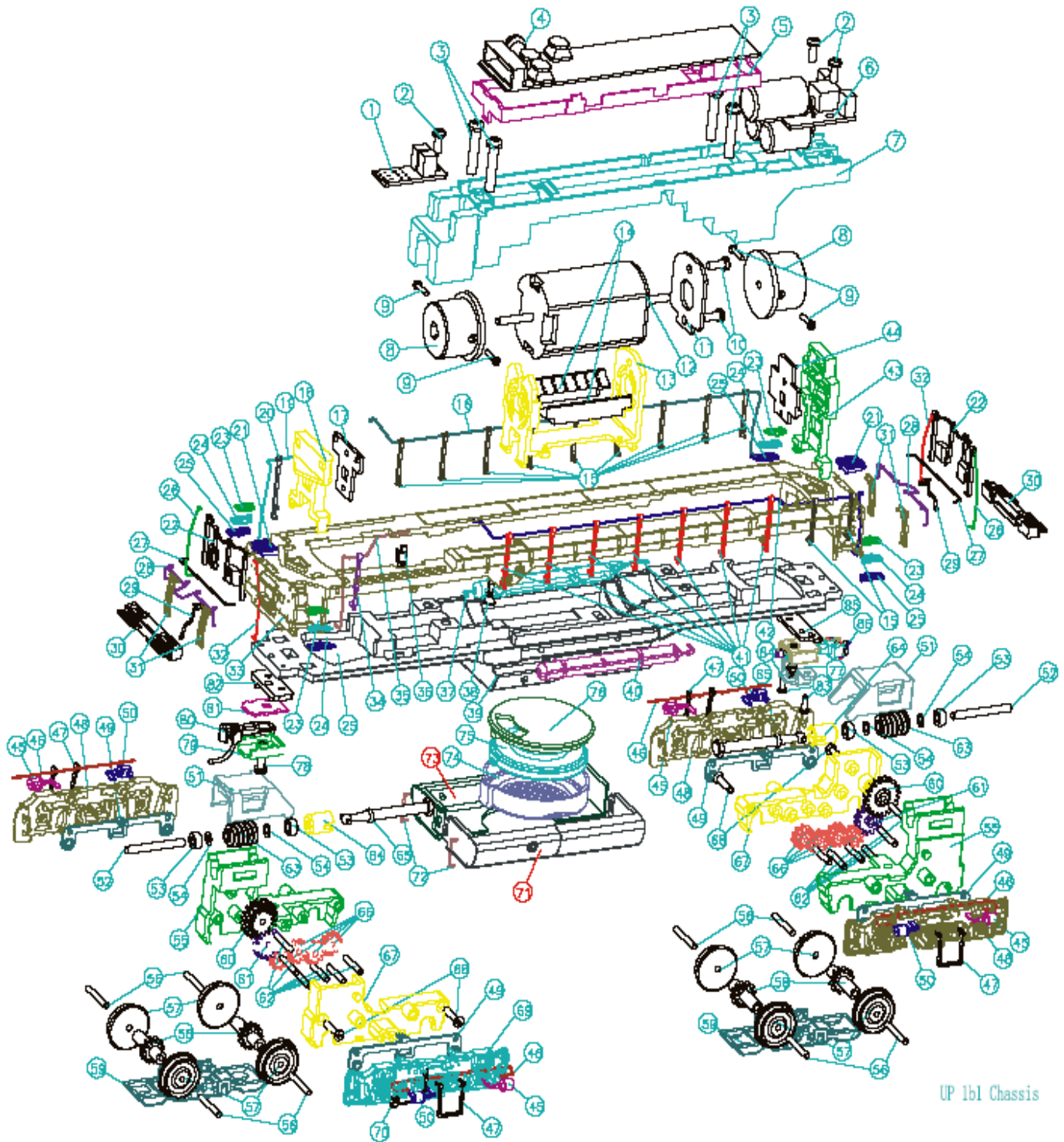
EL 1bl Chassis

GP-35 CHASSIS EXPLODED VIEW (N&W)



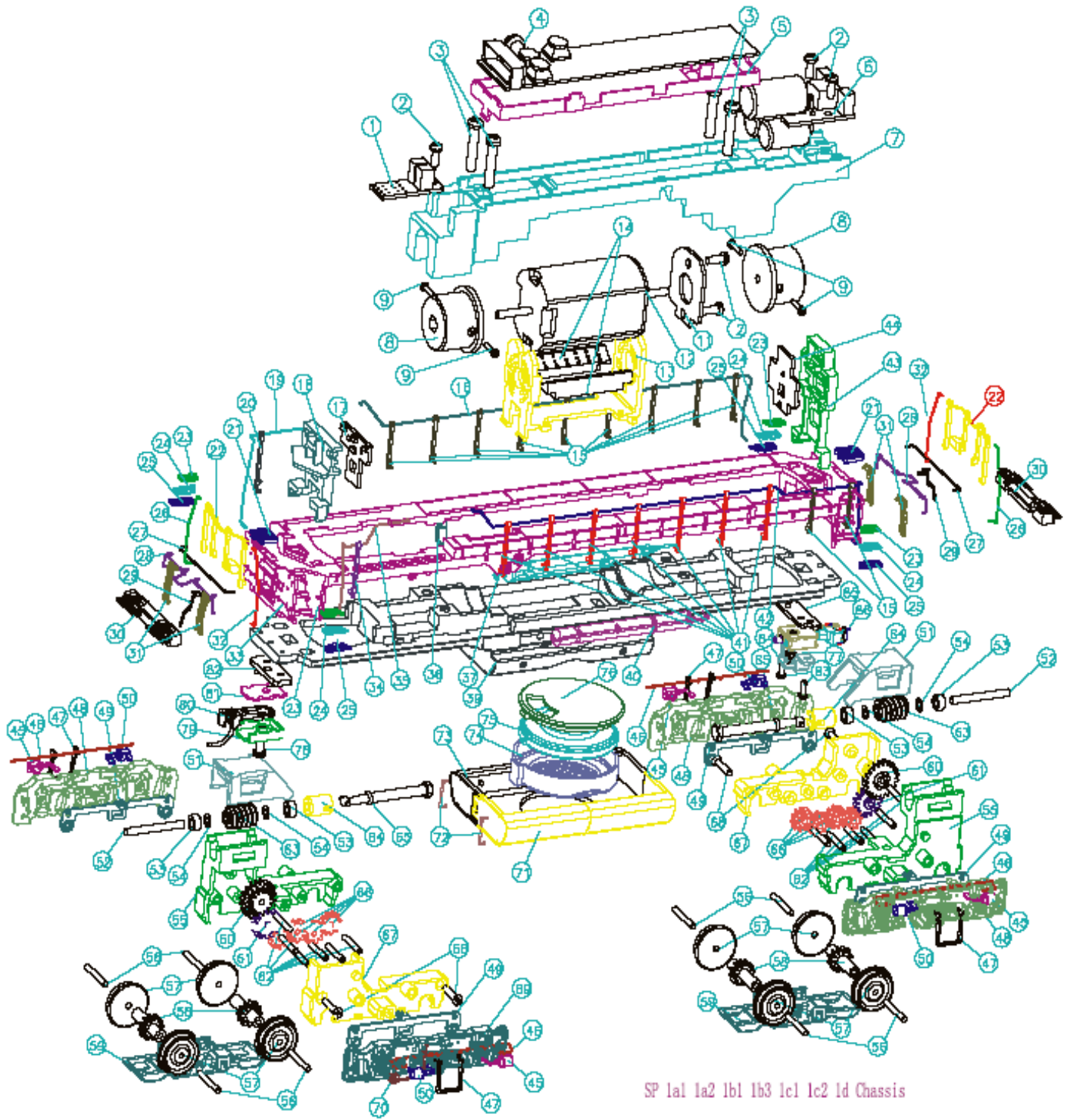
N&W 1302-1308 Early Chassis

GP-35 CHASSIS EXPLODED VIEW (UP)

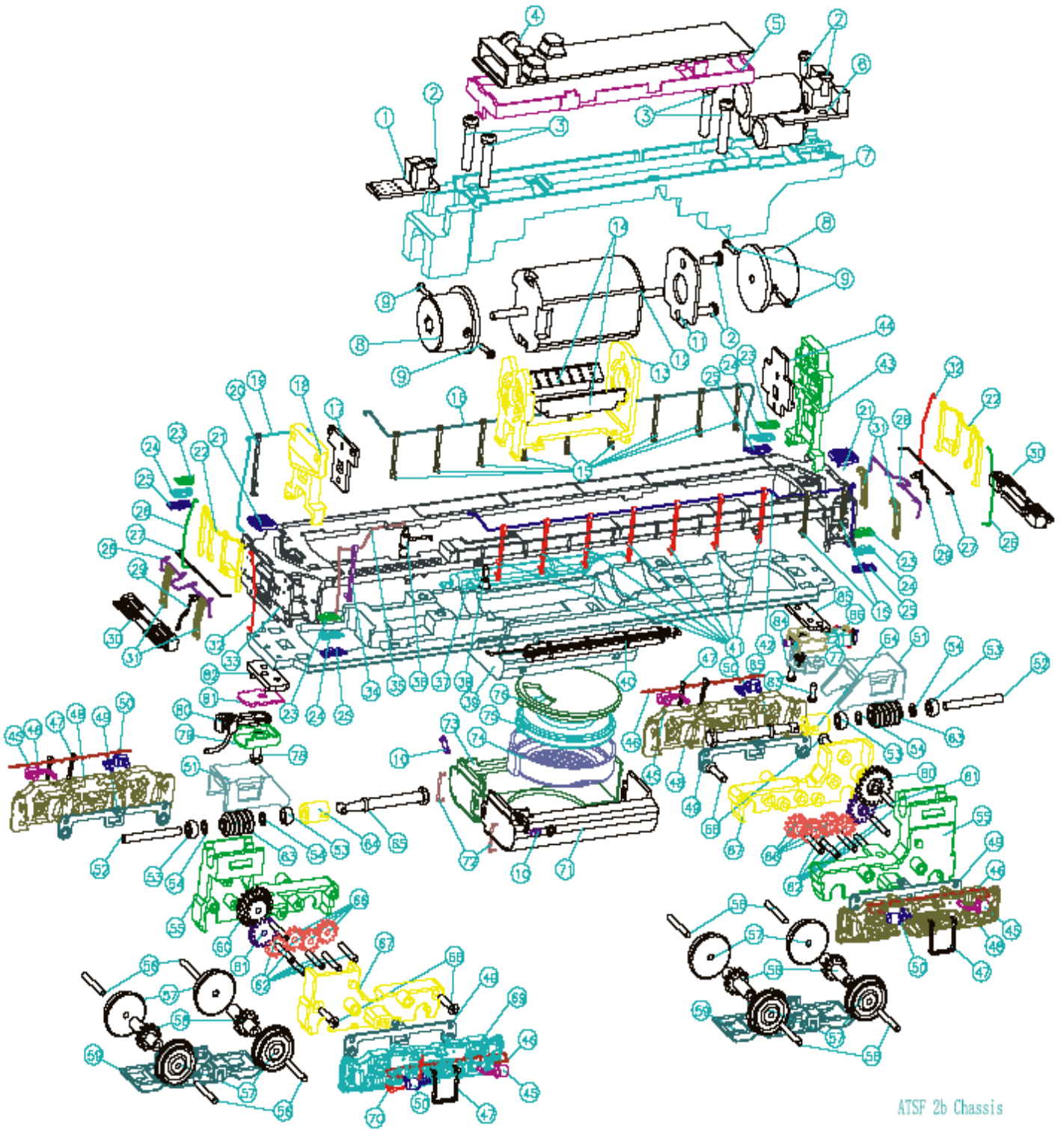


UP 1b1 Chassis

GP-35 CHASSIS EXPLODED VIEW (SP)



GP-35 CHASSIS EXPLODED VIEW (SANTA FE)



ATSF 2b Chassis