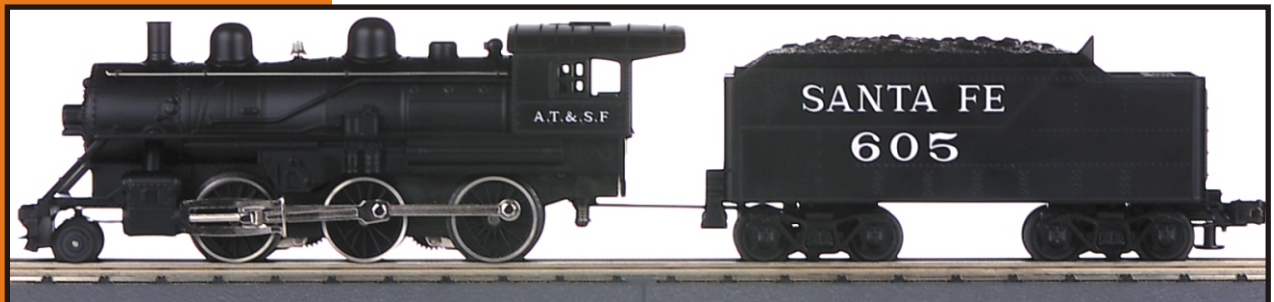


**RAIL KING**<sup>®</sup>  
By M.T.H. Electric Trains

30-1136-0

30-1137-0

# 2-6-0 Steam Engine



REV.070902

# 2-6-0 Steam Engine

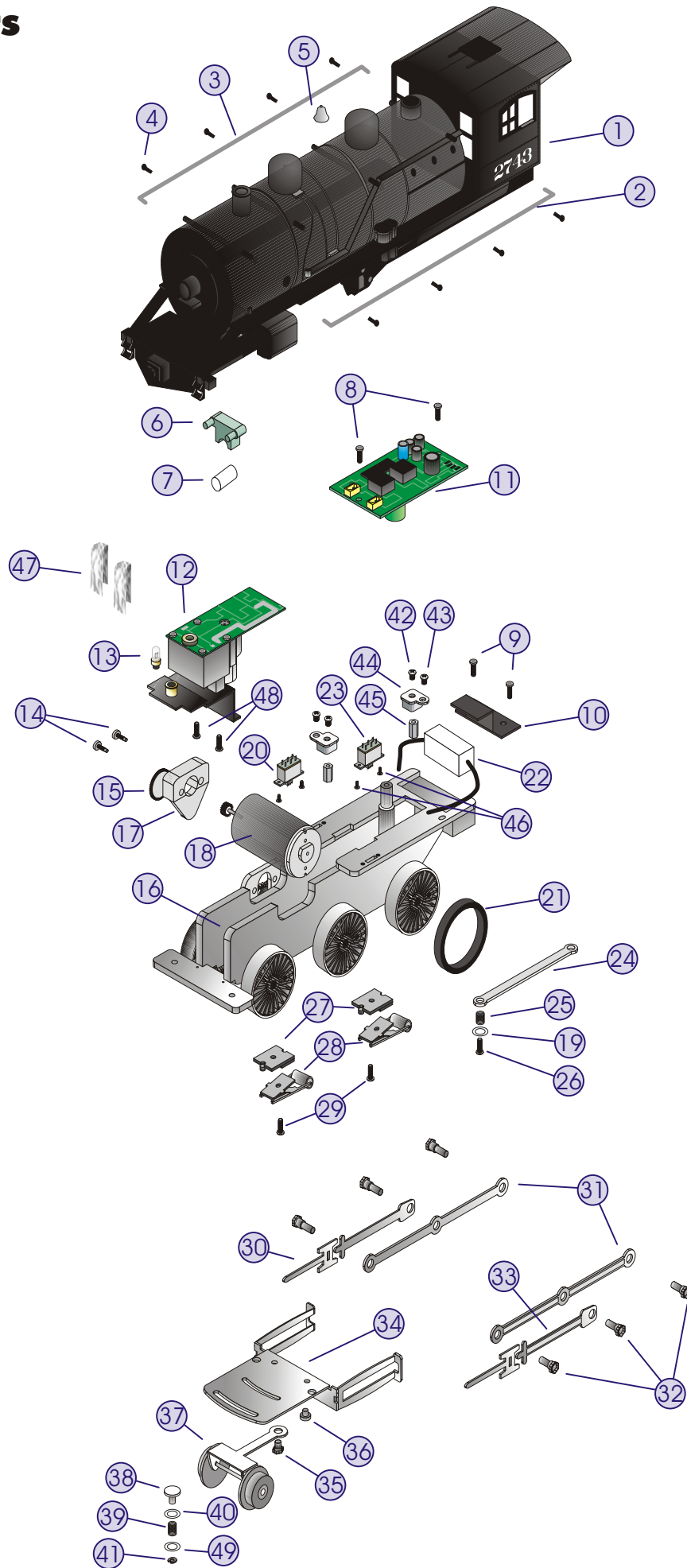
## Engine Parts

Name and Number	Part #	\$Price Per Unit	Name and Number	Part #	\$Price Per Unit
1.) Boiler (#2743)	FB-1200078	*75.00	41.) E-clip ( 2.5x6.0x0.5mm )	IF-0000004	0.15
2.) Handrail ( nickel )( left )	FB-1220020	2.00	42.) Screw ( 4/40x6.0mm )( roundhead )	IA-0000003	0.15
3.) Handrail ( nickel )( right )	FB-1210010	2.00	43.) Screw ( 4/40x6.0mm )( roundhead )	IA-0000003	0.15
4.) Stanchion ( black ) ( metal )( handrail stanchion )	FB-1200024	0.25	44.) Insulator ( black ) ( top )( square )( pick-up )	BD-0000026	2.00
5.) Bell ( nickel )	FB-1200002	4.00	45.) Nut ( nickel ) ( 2.5x5.0x10.0mm )	IC-0000005	0.50
6.) Lens ( green ) ( boxed shaped w/ 2 pins sticking out on each side ) ( 13.5 mm long pins )( marker lens ) ( bottom of lens is notched out on bottom for headlight )	FA-1230021	2.00	46.) Screw ( M2x4.0mm )( pan head )	IA-0000007	0.15
7.) Lens ( headlight/reverse light )( 3.9x6.0x13.0mm ) ( 7.0x2.1mm )( 4 ribs for press fit )	FA-1230022	2.00	47.) Wick ( white ) ( for smoke unit )( 4" long )( sold as a pair ) ( requires 2 wicks per smoke unit )	AA-0000001	1.00
8.) Screw ( 4/40x6.0mm )( roundhead )	IA-0000003	0.15	48.) Screw ( 4/40x6.0mm )( roundhead )	IA-0000003	0.15
9.) Screw ( 6/32x6.0mm )( roundhead )	IA-0000027	0.15	49.) Washer ( clear ) ( 5.0x9.0x0.2mm )( plastic )	ID-0000029	0.15
10.) Bracket ( black ) ( metal )( holds resistor )	IH-0000020	4.00			
11.) DCRU	AC-0000003	*39.95			
12.) Smoke Unit	AA-1200013	50.00			
13.) Bulb ( clear ) ( 18v )( small globe )( small screw base )	CA-0230001	1.00			
14.) Screw ( M3x6.0mm )( roundhead )	IA-0000016	0.15			
15.) Gear ( black )( plastic )	EG-0000003	3.00			
16.) Drive block ( black )( 3 axle )	DF-1200014	*50.00			
17.) Motor mount ( black )	BI-0000011	15.00			
18.) Motor (RS-280)	BE-0000023	10.00			
19.) N/A					
20.) Switch ( large )( 2 position )	BB-0000006	5.00			
21.) Traction tire	DE-0000023	0.75			
22.) Resistor	AI-0000005	2.00			
23.) Switch ( small )( smoke unit )	BB-1040002	5.00			
24.) Draw bar ( black ) ( 67.5mm long )	FB-1200079	3.00			
25.) Spring ( nickel ) ( 6.5x11.0mm )( w/ 0.4mm thick wire )	IE-0000007	0.50			
26.) Screw ( 4/40x6.0mm )( washer head )	IA-0000028	0.15			
27.) Insulator ( black ) ( pick-up )( bottom )( flat )( square )	BD-0000024	2.00			
28.) Pick up ( 8.0x11.0mm roller )( 28.0mm long )	BD-0000038	5.00			
29.) Screw ( nickel ) ( 4/40x8.0mm )( roundhead )	IA-0000029	0.15			
30.) Crosshead ( nickel )	EC-1250010	1.00			
31.) Side rod ( nickel )	EC-1250011	2.00			
32.) Bolt ( nickel ) ( 4/40x8.0mm )( w/ oversized shank )	IA-0000030	1.00			
33.) Drive rod ( nickel )	EC-1250012	1.00			
34.) Pivot plate ( nickel ) ( for lead truck )	IH-0000021	5.00			
35.) Bolt ( nickel ) ( 4/40x8.0mm )( w/ oversized shank )	IA-0000030	1.00			
36.) Screw ( 4/40x4.0mm )( roundhead )	IA-0000021	0.15			
37.) Truck ( black ) ( lead truck )( single axle )	DA-1230013	10.00			
38.) Pin ( black ) ( 3.0x9.0mm )( single e-clip groove )	IG-0000007	0.50			
39.) Spring ( 3.5x6.0x7.0mm )	IE-0000016	0.50			
40.) Washer ( 3.0x7.0x0.4mm )	ID-0000028	0.15			

\*Requires Exchange  
All parts are priced as each

# 2-6-0 Steam Engine

## Engine Parts



# 2-6-0 Steam Engine Tender

## Tender Parts

Name and Number	Part #	\$Price Per Unit
1.) Shell ( tender )( NYC )	GA-1200031	*40.00
2.) Motor plate ( plastic )( mechanical whistle )	BI-0000012	2.00
3.) Screw ( M3x10.0mm )( washer head )( self-drilling )	IA-0000013	0.15
4.) Motor ( FC-130 )( for mechanical whistle )	BE-0000024	6.00
5.) Board ( whistle power )	AF-0000001	*15.00
6.) Screw ( 4/40x6.0mm )( roundhead )	IA-0000003	0.15
7.) Motor mount ( mechanical whistle )	BI-0000013	5.00
8.) Screw ( M3x10.0mm )( washer head )( self-drilling )	IA-0000013	0.15
9.) Whistle impellers ( plastic )	AI-0000006	3.00
10.) Whistle base	AI-0000007	8.00
11.) Chassis ( tender )	GB-1200020	*15.00
12.) Screw ( M3x10.0mm )( washer head )( self-drilling )	IA-0000013	0.15
13.) Screw ( M3x12.0mm )( washer head )( self-drilling )	IA-0000031	0.15
14.) Screw ( nickel ) ( M3x6.0mm )( roundhead )	IA-0000015	0.15
15.) Screw ( 4/40x6.0mm )( roundhead )	IA-0000003	0.15
16.) Insulator ( black ) ( top )( square )( pick-up )	BD-0000026	2.00
17.) Truck ( black ) ( 2 axle )( leading/trailing )( tender )	DA-1250007	30.00
18.) Nut ( nickel ) ( 2.5x5.0x7.0mm )	IC-0000008	0.50
19.) Insulator ( black ) ( pick-up )( bottom )( flat )( square )	BD-0000024	2.00
20.) Pick-up ( 8.0x11.0mm roller )( 24.0mm long )	BD-0000040	5.00
21.) Screw ( nickel ) ( M3x6.0mm )( roundhead )	IA-0000015	0.15
22.) T-bar ( black ) ( 4.0x20.0mm )( plastic )	IG-0000001	0.50
23.) Coupler ( black ) ( mechanical )( T-bar mounting )( 51.5mm long )	DD-4000006	3.00
24.) Armature ( 45.0mm long )	DD-4000007	1.00
25.) Washer ( clear ) ( 5.0x9.0x0.2mm )( plastic )	ID-0000031	0.15
26.) Washer ( 4.5x10.0x0.5mm )( metal )	ID-0000009	0.15
27.) Spring ( nickel ) ( 6.5x11.0mm )( w/ 0.4mm thick wire )	IE-0000007	0.50
28.) E-clip ( 3.0x8.0x0.5mm )( metal )	IF-0000002	0.15
29.) Screw ( 4/40x4.0mm )( roundhead )	IA-0000021	0.15

\*Requires Exchange  
All parts are priced as each

# 2-6-0 Steam Engine Tender

## Tender parts

