

RAILKING[®]
By M.T.H. Electric Trains

30-4039-1a

GS-4
4-8-4



GL072501

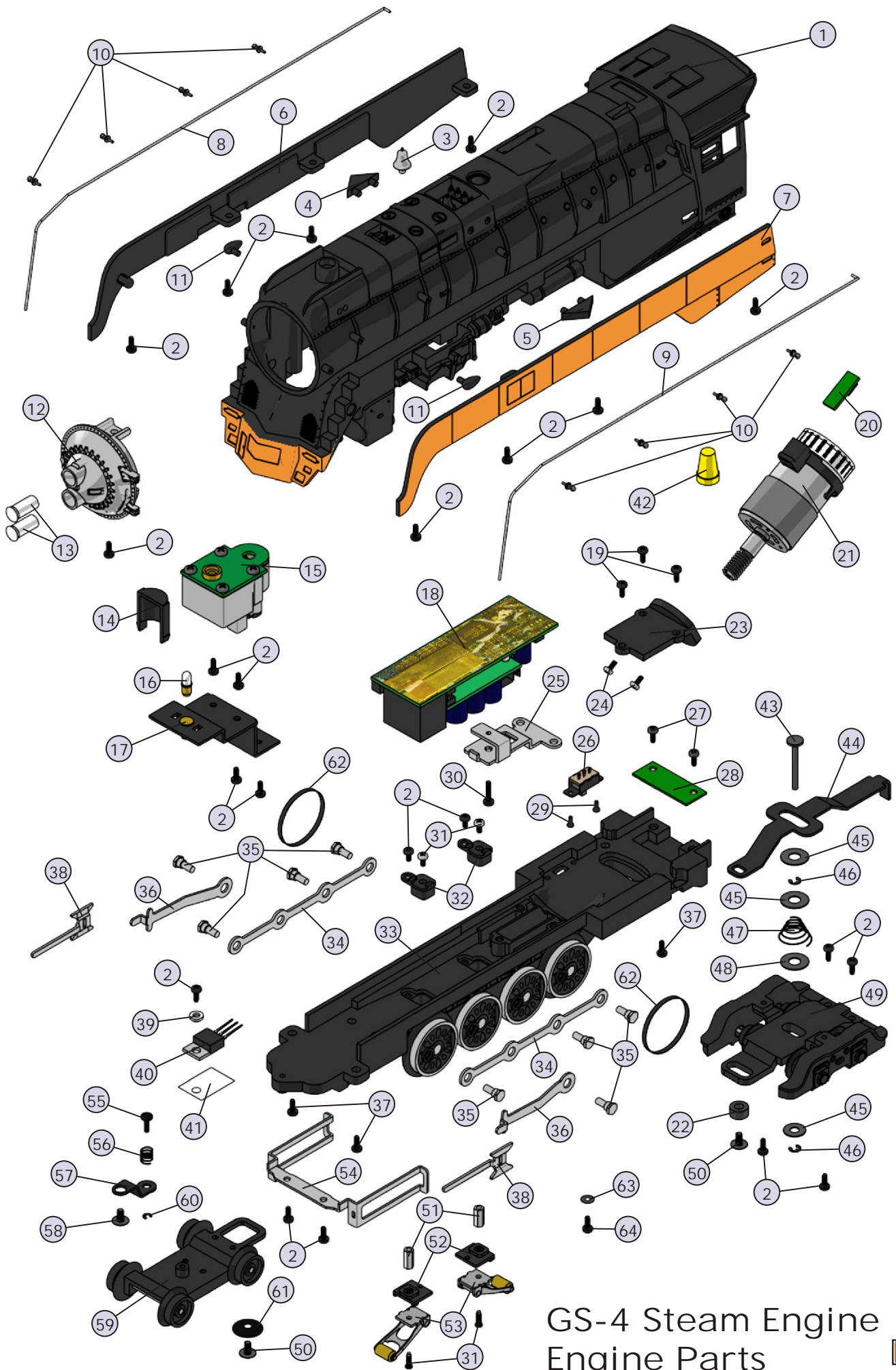


GS-4 Steam Engine

Engine Parts

Name and Number	Part #	\$Price Per Unit	Name and Number	Part #	\$Price Per Unit
1.) Shell (orange, red, silver, black) (boiler)(S.P. Daylight)(# 4449)	FB-1200182	*100.00	37.) Screw (6/32x8.0mm)(roundhead)	IA-0000050	0.15
2.) Screw (4/40x6.0mm)(roundhead)	IA-0000003	0.15	38.) Crosshead (nickel) (38.8mm long)	EC-1250016	5.00
3.) Bell (nickel)	FB-1200002	4.00	39.) Insulator washer (white) (6.0x4.0x2.5mm)(plastic)	ID-0000033	0.15
4.) Number board housing (right)(black)(S.P. Daylight)(# 4449)	FB-1210041	10.00	40.) Voltage regulator (LM2937ET)	AG-0000032	3.00
5.) Number board housing (left)(black)(S.P. Daylight)(# 4449)	FB-1220048	10.00	41.) Insulator (clear) (13.0x19.0x0.1mm thick)(single hole)	ID-0000024	0.15
6.) Side panel (orange) (right)(S.P. Daylight)(# 4449)	FB-1210038	*15.00	42.) Wire nut (yellow)	BI-4500003	0.25
7.) Side panel (orange) (left)(S.P. Daylight)(# 4449)	FB-1220045	*15.00	43.) Pin (5.0x25.0mm) (1.5x8.0mm flathead)(2 e-clip grooves)	IG-0000033	0.50
8.) Handrail (nickel) (right)(boiler)(196.0x30.0x25.0mm)	FB-1210037	2.00	44.) Draw bar	FB-1200181	3.00
9.) Handrail (nickel) (left)(boiler)(196.0x30.0x25.0mm)	FB-1220044	2.00	45.) Washer (5.5x10.0x0.5mm)	ID-0000075	0.15
10.) Stanchion (black) (plastic)(3.0mm long)	FB-1200242	0.50	46.) E-clip (3.5x9.0x0.6mm)	IF-0000009	0.15
11.) Marker light housing (black)	FB-1200184	6.00	47.) Spring (nickel) (6.5x12.5x13.0mm)(0.6mm thick wire)	IE-0000062	0.50
12.) Boiler front (silver) (S.P. Daylight)(# 4449)(metal)	FB-1230004	*12.00	48.) Washer (5.5x15.0x1.0mm)	ID-0000095	0.15
13.) Lens (headlight)(clear)	FA-1230022	2.00	49.) Truck (black) (2 axles)(trailing)(boiler)	DA-1240032	25.00
14.) Light reflector (black)(plastic)	CI-0000024	3.00	50.) Screw (6/32x6.0mm)(washer head)	IA-0000214	0.15
15.) Smoke unit (Proto-Sound® 2.0)	AA-0000029	50.00	51.) Nut (2.5x5.0x10.0mm)	IC-0000005	0.50
16.) Bulb (clear)(headlight) (6v)(screw base)(small globe)	CA-0000038	1.00	52.) Insulator (black) (pick-up)(bottom)(plastic)	BD-0000001	2.00
17.) Bracket (black) (3 step)(headlight/smoke unit)	IH-0000085	3.00	53.) Pick-up (8.0x11.0mm roller)(28.0mm long)	BD-0000048	5.00
18.) Boards (Proto-Sound® 2.0)	AE-0000001	*200.00	54.) Crosshead guide assembly	EA-1200013	6.00
19.) Screw (6/32x10.0mm)(roundhead)	IA-0000040	0.15	55.) Pin (3.0x15.0mm) (1.3x6.0mm roundhead)(1e-clip groove)	IG-0000003	0.50
20.) Tach board	AG-0000033	6.00	56.) Spring (nickel) (6.5x9.0mm)(0.5mm thick wire)	IE-0000009	0.50
21.) Motor (RS-365SH) (8.0x21.0mm worm gear)(13.0mm long threads) (9.0x30.0mm white flywheel w/ black stripes) (tach board mounting strap)	BE-0000076	25.00	57.) Bracket (black)(lead truck)	IH-1230006	1.00
22.) Spacer (black) (6.0x9.0x3.8mm)(metal)	ID-0000103	1.00	58.) Screw (4/40x6.0mm)(washer head)	IA-0000028	0.15
23.) Motor mount (black)	BI-0000034	15.00	59.) Truck (black) (lead)(2 axle)(boiler)	DA-1230022	20.00
24.) Screw (yellow Zinc) (M2.5x6.0mm)(roundhead w/ lock washer)	IA-0000089	0.15	60.) E-clip (2.5x6.0x0.5mm)	IF-0000004	0.15
25.) Bracket (Aluminum) (for Proto-Sound® 2.0 boards)	IH-0000170	3.00	61.) Spacer (black) (3.5x15.0x2.5mm)(metal)(cupped)	ID-0000014	1.00
26.) Switch (small)	BB-0000009	5.00	62.) Traction tire	DE-0000022	0.75
27.) Screw (6/32x6.0mm)(roundhead)	IA-0000027	0.15	63.) Washer (black) (3.0x6.0x0.4mm)(fiber)	ID-0000040	0.15
28.) PC board (green) (w/ 10 pin female plug)	AG-0000039	8.00	64.) Screw (6/32x4.0mm)(roundhead)	IA-0000060	0.15
29.) Screw (M2x4.0mm)(roundhead)	IA-0000058	0.15	NS.) Wire harness (10 pin female PC Board)	BC-1200013	15.00
30.) Screw (4/40x14.0mm)(roundhead)	IA-0000122	0.15	NS.) Wire harness (7 pin male plug)	BC-1200014	8.00
31.) Screw (nickel) (M3x6.0mm)(roundhead)	IA-0000015	0.15	NS.) Wire harness (5 pin male plug)	BC-1200015	5.00
32.) Insulator (black) (top)(square)(pick-up)	BD-0000026	2.00	NS.) Wire harness (4 pin male plug)	BC-1200016	4.00
33.) Drive block (black)(4 axle)	DF-1200027	*75.00			
34.) Side rod (nickel) (1.0x87.5mm)(4 bolt holes)	EC-1250023	2.00			
35.) Bolt (nickel) (M3x8.0mm)(hex head)(4.0x2.5mm shoulder)	IA-0000087	1.00			
36.) Drive rod (nickel)	EC-1250022	5.00			

*Requires Exchange
All parts are priced as each



GS-4 Steam Engine
Engine Parts

GS-4 Steam Engine Tender

Tender Parts

Name and Number	Part #	\$Price Per Unit
1.) Shell (tender)(plastic) (S.P Daylight)(orange, red, silver, black)	GA-1200071	*40.00
2.) Weight (black) (metal)(34.4x39.3x19.8mm) (w/ 2 holes tapped for 4/40 screws)	II-0000015	5.00
3.) Wire harness (black male 10 pin plug)	BC-1200105	12.00
4.) Screw (4/40x6.0mm)(roundhead)	IA-0000003	0.15
5.) Battery charger jack (black)	BG-0000001	3.00
6.) Screw (M2x4.0mm)(roundhead)	IA-0000058	0.15
7.) Spacer (black) (3.0x6.0x4.0mm)(plastic)	ID-0000071	0.15
8.) Volume pot (small)(blue)	BI-0000040	5.00
9.) Screw (M3x8.0mm)(roundhead)	IA-0000035	0.15
10.) Speaker (STAR)(PR-050-A111)(16 ohms)(MAX 2W)	BF-0000007	8.95
11.) Speaker cone (black) (44.0x48.3x23.0mm)(2 screw hole tabs)(plastic)	BF-0000016	5.00
12.) Screw (M3x6.0mm)(roundhead)	IA-0000016	0.15
13.) Battery leads (60.0mm long wires w/ black male 2 pin plug) (45.0mm long wires w/ battery charger jack)	BC-0000101	6.00
14.) Battery	BG-4000001	10.00
15.) Bracket (battery)	IH-0000042	3.00
16.) Screw (M3x4.0mm)(roundhead)	IA-0000010	0.15
17.) Gasket (black) (speaker ring)(43.8x49.8x3.0mm)(foam)	IB-0000009	0.50
18.) Chassis (black)(tender) (has holes for battery charger jack)	GB-1200048	*15.00
19.) Screw (M3x16.0mm)(washer head)(self-drilling threads)	IA-0000025	0.15
20.) T-bar	IG-0000001	0.50
21.) Coupler (black) (Proto Sound® 2.0)(51.0mm long)	DD-0000032	10.00
22.) Spring (nickel) (6.5x14.0mm)(w/ 0.5mm thick wire)	IE-0000022	0.50
23.) Washer (4.5x10.0x5.0mm)	ID-0000009	0.15
24.) E-clip (3.0x8.0x0.5mm)	IF-0000001	0.15
25.) Screw (6/32x6.0mm)(washer head)	IA-0000214	0.15
26.) Truck (black) (3 axle)(leading/trailing)(tender)	DA-1250005	25.00
27.) Draw bar (60.7x10.0x1.2mm)(1 step, 2 bends) (2 large holes, 1 small hole)	GA-1200027	3.00
NS.) Axle bearing (black) (3 axle)(plastic)	DC-0000005	3.00

*Requires Exchange
All parts are priced as each

GS-4 Steam Engine Tender

Tender Parts

