

**RAILKING**<sup>®</sup>  
By M.T.H. Electric Trains

30-2251-3  
30-2252-3  
30-2253-3  
30-2254-3

# Railking Scale RS-27 Non-powered Diesel Engine

Scale GP-9 drawing being temporarily  
used for reference for this model



GL070102

# Railking Scale RS-27 Diesel Engine

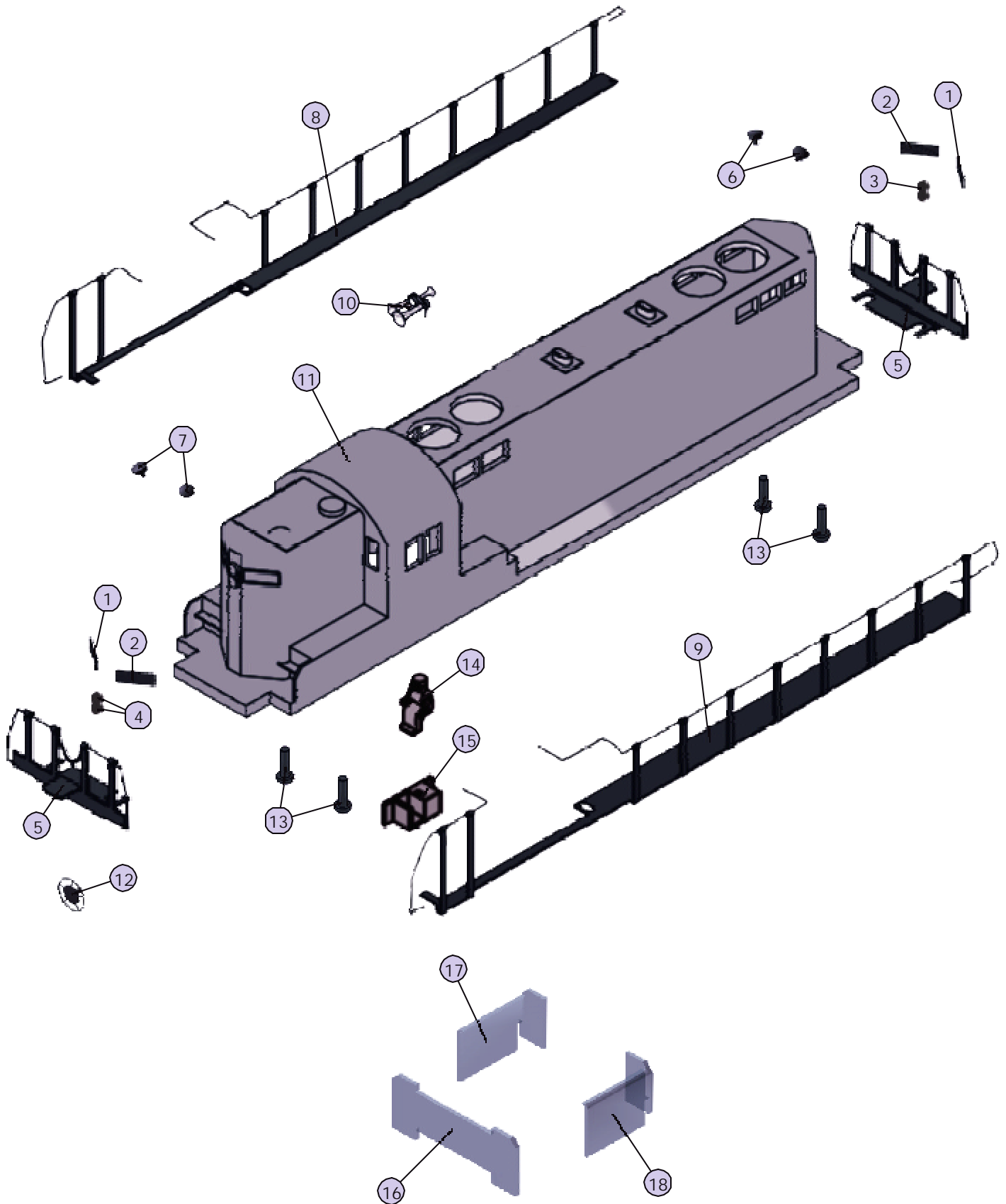
## Shell Parts

NameandNumber	Part#	\$Price PerUnit	NameandNumber	Part #	\$Price PerUnit
1.) Numberboard (blackw/whitenumbers)(leftrear/rightfront) (UP)(#678)	FG-2200076	2.00	9.) Handrail(green) (right)(C&NW)(#900)(#903)	FC-2220042	12.00
Numberboard (blackw/whitenumbers)(leftrear/rightfront) (C&NW)(#903)	FG-2200077	2.00	Handrail(white) (right)(SOO)(#415)(#416)	FC-2220043	12.00
Numberboard (whitew/blacknumbers)(leftrear/rightfront) (SOO)(#416)	FG-2200078	2.00	Handrail(green) (right)(PRR)(#2400)(#2407)	FC-2220044	12.00
Numberboard (blackw/whitenumbers)(leftrear/rightfront) (PRR)(#2407)	FG-2200079	2.00	10.) Airhorns(gray) (3chime)(UP)(#675)(#678)	FC-2100062	5.00
2.) Numberboard (blackw/whitenumbers)(rightrear/leftfront) (UP)(#678)	FG-2200080	2.00	Airhorns(green) (3chime)(C&NW)(#900)(#903)	FC-2100842	5.00
Numberboard (blackw/whitenumbers)(rightrear/leftfront) (C&NW)(#903)	FG-2200081	2.00	Airhorns(white) (3chime)(SOO)(#415)(#416)	FC-2200322	5.00
Numberboard (whitew/blacknumbers)(rightrear/leftfront) (SOO)(#416)	FG-2200082	2.00	Airhorns(green) (3chime)(PRR)(#2400)(#2407)	FC-2200323	5.00
Numberboard (blackw/whitenumbers)(rightrear/leftfront) (PRR)(#2407)	FG-2200083	2.00	11.) Shell(yellow,red,gray) (UP)(#678)	FC-2200333	*100.00
3.) Lens(clear)(reverselight) (3.0x3.0mmlenshead)(2)(6.0x6.0x7.0mmbase) (cutoutonsides)(bulbsheldinw/heatshrinktube)	FA-0000118	2.00	Shell(yellow,green) (C&NW)(#903)	FC-2200334	*100.00
4.) Lens(clear) (3.0x2.3mmlens)(requires2)(headlight)	FA-0000119	1.00	Shell(white,red,black) (SOO)(#416)	FC-2200335	*100.00
5.) Handrail(gray) (front&rear)(UP)(#675)(#678)	FC-2250075	8.00	Shell(green,gold) (PRR)(#2407)	FC-2200336	*100.00
Handrail(green) (front&rear)(C&NW)(#900)(#903)	FC-2250076	8.00	12.) Brakewheel(yellow) (UP)(#675)	FC-2200328	2.00
Handrail(white) (front&rear)(SOO)(#415)(#416)	FC-2250077	8.00	Brakewheel(yellow) (C&NW)(#900)	FC-2200329	2.00
Handrail(green&yellow) (front&rear)(PRR)(#2400)(#2407)	FC-2250078	8.00	Brakewheel(red) (SOO)(#415)	FC-2200330	2.00
6.) Sand fill cap(gray) (2.5x5.5mm)(plastic)(UP)(#675)(#678)	FC-2200316	1.00	Brakewheel(green) (PRR)(#2400)	FC-2200331	2.00
Sand fill cap(green) (2.5x5.5mm)(plastic)(C&NW)(#900)(#903)	FC-2200317	1.00	13.) Screw (M3x16.0mm)(washerhead)(self-drilling)	IA-0000025	0.15
Sand fill cap(red) (2.5x5.5mm)(plastic)(SOO)(#415)(#416)	FC-2200318	1.00	14.) Engineer(blackman)	FI-0000030	5.00
Sand fill cap(green) (2.5x5.5mm)(plastic)(PRR)(#2400)(#2407)	FC-2200319	1.00	Engineer(whiteman)	FI-0000001	5.00
7.) Sand fill cap(yellow) (2.5x5.5mm)(plastic)(UP)(#675)(#678)	FC-2200320	1.00	15.) Engineerbase(gray)(rightside)	FI-0000025	1.00
Sand fill cap(yellow) (2.5x5.5mm)(plastic)(C&NW)(#900)(#903)	FC-2200321	1.00	16.) Lens(clear)(front)	FA-2200021	3.00
Sand fill cap(red) (2.5x5.5mm)(plastic)(SOO)(#415)(#416)	FC-2200318	1.00	17.) Lens(clear)(right/right rear)	FA-2200022	3.00
Sand fill cap(green) (2.5x5.5mm)(plastic)(PRR)(#2400)(#2407)	FC-2200319	1.00	18.) Lens(clear)(left/leftrear)	FA-2200023	3.00
8.) Handrail(gray) (right)(UP)(#675)(#678)	FC-2210041	12.00			
Handrail(green) (right)(C&NW)(#900)(#903)	FC-2210042	12.00			
Handrail(white) (right)(SOO)(#415)(#416)	FC-2210043	12.00			
Handrail(green) (right)(PRR)(#2400)(#2407)	FC-2210044	12.00			
9.) Handrail(gray) (right)(UP)(#675)(#678)	FC-2220041	12.00			

\*Requires Exchange  
Allpartsarepricedaseach



# Railking Scale RS-27 Diesel Engine Shell Parts



# Railking Scale RS-27 Diesel Engine

## Chassis Parts

NameandNumber	Part #	\$Price PerUnit	NameandNumber	Part #	\$Price PerUnit
1.) Chassis(black) (57.0x326.0mm)(hasholesforbatterychargerjack)	DH-2200072	*20.00	17.) Snowplow(gray) (UP)(#675)(#678)	FH-2130004	4.00
2.) Motormount(black)	BI-0000009	15.00	Snowplow(green) (C&NW)(#900)(#903)	FH-2130015	4.00
3.) Screw (M3x14.0mm)(roundhead)(w/lockwasher)	IA-0000012	0.15	Snowplow(black) (SOO)(#415)(#416)	FH-2130001	4.00
4.) Screw (4/40x6.0mm)(flathead)	IA-0000038	0.15	Snowplow(green) (PRR)(#2400)(#2407)	FH-2130022	4.00
5.) Pilot(gray) (pilothas2screwholesformountingpilot) (UP)(#675)(#678)	DG-2150059	20.00			
Pilot(green) (pilothas2screwholesformountingpilot) (C&NW)(#900)(#903)	DG-2150060	20.00			
Pilot(black) (pilothas2screwholesformountingpilot) (SOO)(#415)(#416)	DG-2150061	20.00			
Pilot (greenw/yellow step edges) (pilothas2screwholesformountingpilot) (PRR)(#2400)(#2407)	DG-2150062	20.00			
6.) T-bar (black) (4.0x20.0mm)(plastic)	IG-0000001	0.50			
7.) Coupler(black) (mechanical)(51.5mmlong)(T-barmounting) (armaturepinis36.2mmoutfromend)(newdesign)	DD-0000039	3.00			
8.) Armature(black) (45.0mmlong)(13.0mmwidemountingend) (fataraturepinis41.3mmoutfrommountingend) (thumbtackis32.5mmoutfrommountingend) (1holeoneachsideofthumbtack)	DD-0000040	1.00			
9.) Spring(nickel) (6.4x10.0mm)(w/0.5mmthickwire)	IE-0000070	0.50			
10.) Washer(black) (plastic)(4.6x8.5x2.0mm)(inside7.0x1.0mm) (cupshapedforspringtofitin)	ID-0000060	0.15			
11.) E-clip(3.0x8.0x0.5mm)	IF-0000002	0.15			
12.) Truckside(silver) (fits2axlescaletruck) (truckside screws mount from bottom) (UP)(#675)(#678)	DB-2150009	7.00			
Truckside(black) (fits2axlescaletruck) (truckside screws mount from bottom) (C&NW)(#900)(#903)(SOO)(#415)(#416) (PRR)(#2400)(#2407)	DB-2150010	7.00			
13.) Screw (4/40x6.0mm)(roundhead)	IA-0000003	0.15			
14.) Truck(black)(non-powered) (2axle)(2threadedscrewholesformountingpilot) (truckside mount from bottom) (knowgears&solidwheels,knowtractiontires) (motormountsoppositecouplermountingend)	DA-2050021	*30.00			
15.) Screw (M3x4.0mm)(roundhead)	IA-0000010	0.15			
16.) Snowplow(gray) (UP)(#675)(#678)	FH-2130004	4.00			
Snowplow(green) (C&NW)(#900)(#903)	FH-2130015	4.00			
Snowplow(black) (SOO)(#415)(#416)	FH-2130001	4.00			
Snowplow(green) (PRR)(#2400)(#2407)	FH-2130022	4.00			

\*RequiresExchange  
Allpartsarepricedaseach

# Railking Scale RS-27 Diesel Engine Chassis Parts

