

RAILKING
By M.T.H. Electric Trains

30-2173-1
30-2174-1
30-2173-3
30-2174-3

FA-2 AA Units

Diesel Engine Set
&

FA-2 B Unit

Diesel Engine



GL030102



FA-2 AA Units Diesel Engines

Powered A Unit Parts

Name and Number	Part #	\$Price Per Unit	Name and Number	Part #	\$Price Per Unit
1.) Diaphragm(black) (3rib)(26.0x50.0x10.0mm)(notchedtopcorners) (2centermountingplugs)(rubber)	FI-0000017	2.00	25.) Board (Proto-Sound®)(bottom)	AD-4500001	*60.00
2.) Shell(green,gold) (PRR)(#9618)	FC-2200282	*65.00	26.) Board (Proto-Sound®)(top)	AE-4500001	*100.00
Shell(blue,black,yellow,gray) (B&O)(#4003)	FC-2200283	*65.00	27.) Proto-Sound®chip	N/A	19.95
3.) Airhorn(green) (1chime)(PRR)(#9618)(#9619)	FC-2200284	3.00	28.) Clip(black) (Proto-Sound®board)(top)(plastic)	IF-0000006	1.00
Airhorn(black) (1chime)(B&O)(#4003)(#4004)	FC-2100158	3.00	29.) Clip(black) (Proto-Sound®board)(bottom)(plastic)	IF-0000007	1.00
4.) Lens(clear) (4.6x6.8x2.7mm)(1.2x8.0mmlenshead) (4ribsforpressfit)	FA-2200016	3.00	30.) Bracket(brass) (mountsProto-Sound®boards&twistonvolumepot)	IH-4500019	3.00
5.) Numberboard (blackw/whitenumbers)(sticker)(PRR)(#9618)	FG-2200052	0.25	31.) Volumepot(B10K)(1.2T) (145.0mmlongwiresw/blackflatmale3pinplug)	BI-0000066	5.00
Numberboard (blackw/whitenumbers)(sticker)(B&O)(#4003)	FG-2200053	0.25	32.) Batteryleads (150.0mmlongwiresw/whitemale2pinplug)	BC-0000038	3.00
6.) Lens(clear) (windshield&cabsidewindows)	FA-2200017	6.00	33.) Battery(white) (8.4volts)(re-chargable)(nickel-cadium)	BG-4000001	10.00
7.) Screw (M3x4.0mm)(roundhead)	IA-0000010	0.15	34.) Bracket(black)(battery) (verticalmount)(metal)(18.0x27.5x25.0mm)	IH-0000340	4.00
8.) Bulb(clear) (18v)(smallglobe)(smallscrewbase)	CA-0230001	1.00	35.) T-bar (black) (4.0x20.0mm)(plastic)	IG-0000001	0.50
9.) Bracket(black) (11.2x33.7mm)(9.0mmlongmountingbase) (w/smallscrewbasesocket)(metal)	IH-0000339	5.00	36.) Coupler(black) (non-operating)(34.5mmlong)(T-barmounting)	DD-4000005	3.00
10.) Screw (4/40x6.0mm)(flathead)	IA-0000038	0.15	37.) Proto-Coupler®(black) (44.5mmlong)	DD-0000004	10.00
11.) Wirestrap(black) (metal)(small)	IH-0000012	1.00	38.) Spring(nickel) (6.5x14.0mm)(w/0.5mmthickwire)	IE-0000022	0.50
12.) Pilot(green) (2screwholesformountingpilot) (PRR)(#9618)(#9619)	DG-2230018	15.00	39.) Washer (black) (4.5x10.0x0.6mm)	ID-0000041	0.15
Pilot(black) (2screwholesformountingpilot) (B&O)(#4003)(#4004)	DG-2230019	15.00	40.) E-clip(black) (3.0x8.0x0.5mm)	IF-0000002	0.15
13.) Rubberband	BI-4500004	0.50	41.) Wireharness (blackflatmale4pinplug) (180.0mmlongwiresw/blueflatmale4pinplug) (180.0mmlongwhite&redwires) (black wires forProto-Coupler®&switchoffofblueplug)	BC-2200045	10.00
14.) Motor(RS-365SH) (7.8x17.0mmlongwormgearw/10.0mmlongthreads) (9.0x30.0mmlongblacktaperedflywheel)	BE-0000120	25.00	42.) Switch(large)(2position)	BB-0000006	5.00
15.) Motor(RS-365SH) (7.8x17.0mmlongwormgearw/10.0mmlongthreads) (9.0x30.0mmlongbrassstapertaperedflywheel)	BE-0000121	25.00	43.) Screw (M2x4.0mm)(roundhead)	IA-0000058	0.15
16.) Motormount(black)	BI-0000005	15.00	44.) Screw (M3x16.0mm)(washerhead)(self-drilling)	IA-0000025	0.15
17.) Screw(yellowZinc) (M2.5x6.0mm)(roundhead)(w/lockwasher)	IA-0000001	0.15	45.) Wirenut(yellow)	BI-4500003	0.25
18.) Screw (M3x14.0mm)(roundhead)(w/lockwasher)	IA-0000012	0.15	46.) Truckside(black) (for2axletruck)(PRR)(#9618)(#9619)(#9618B)	DB-2260001	9.00
19.) Chassis(black) (poweredAunit)(56.0x272.0mm)(metal)	DH-2200063	*20.00	Truckside(gray) (for2axletruck)(B&O)(#4003)(#4004)(#5001)	DB-2260002	9.00
20.) Screw (4/40x30.0mm)(roundhead)	IA-0000191	0.15	47.) Insulator(black) (top)(square)(pick-up)	BD-0000026	2.00
21.) Heatsink(Aluminum) (3.0x20.0x9.0mm)	AI-0000039	2.00	48.) Screw(nickel) (M3x6.0mm)(roundhead)	IA-0000015	0.15
22.) Insulator(clear) (13.0x19.0x0.1mm)(singlehole)	ID-0000024	0.15	49.) Tractiontire(black) (rubber)(4.0x17.0mm)	DE-0000018	0.75
23.) Insulator(white) (washer)(3.0x6.0x3.0mm)(plastic)	ID-0000025	0.15	50.) Truck(black) (powered)(2axle)(2holestappedformountingpilot) (trucksidemountfrombottom)	DA-2000012	*30.00
24.) Screw (4/40x6.0mm)(roundhead)	IA-0000003	0.15	51.) Nut(nickel) (2.5x5.0x10.0mm)	IC-0000001	0.50
			52.) Insulator(black) (pick-up)(bottom)(flatw/rect.box)(18.0x30.0mm)	BD-0000039	2.00

*RequiresExchange
Allpartsarepricedaseach



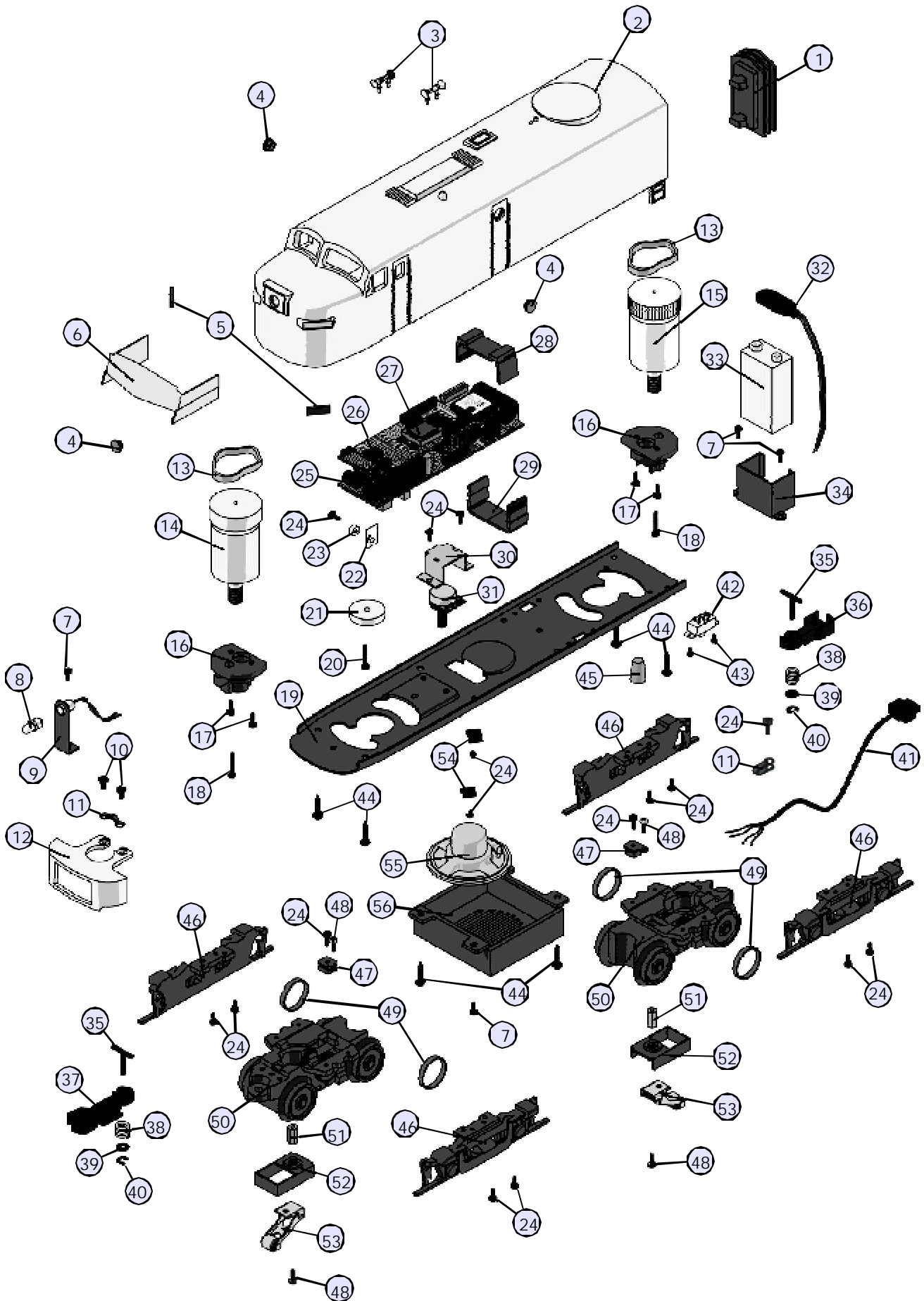
FA-2 AA Units Diesel Engines

Powered A Unit Parts

Name and Number	Part #	\$Price Per Unit
53.) Pick-up (8.0x11.0mm roller)(28.0mm long)	BD-0000005	5.00
54.) Bracket (black) (speaker)(10.0x12.0x5.0mm)(1.0mm thick) (rounded corner by mounting end)	IH-0000231	1.00
55.) Speaker (STAR)(PR-05004-08)(8ohms)(0.2watt)	BF-4500008	8.95
56.) Fuel tank (green) (has slotted holes for speaker) (PRR) (# 9618)	FC-2200285	*15.00
Fuel tank (gray) (has slotted holes for speaker) (B & O) (# 4003)	FC-2200286	*15.00
NS.) Wire harness (140.0mm long red wire/eyelet)	BC-0000149	2.00
NS.) Wire harness (140.0mm long black wire/eyelet)	BC-0000150	2.00

*Requires Exchange
All parts are priced as each

FA-2 AA Units Diesel Engines Powered A unit Parts



FA-2 AA Units Diesel Engines

Non - Powered A Unit Parts

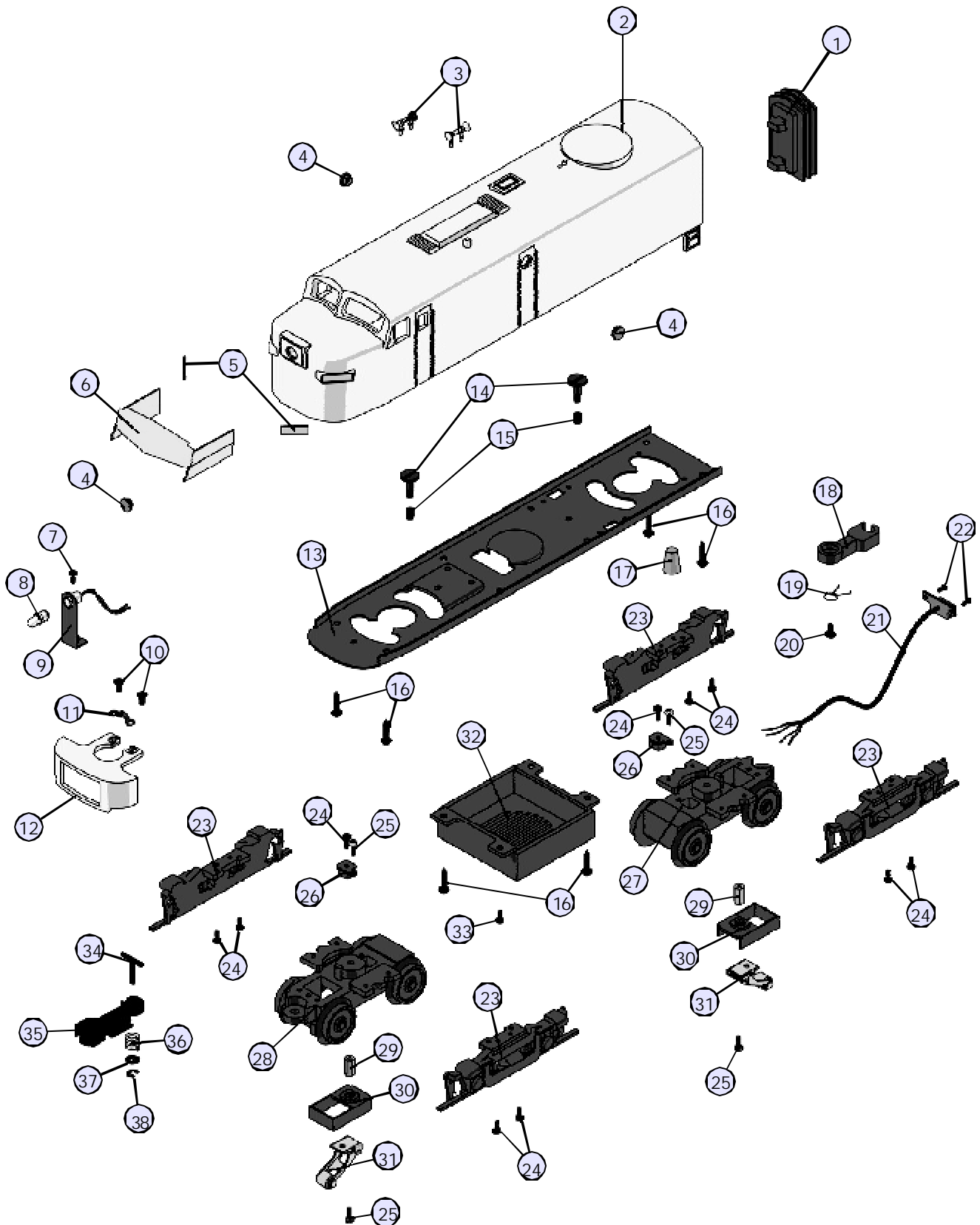
NameandNumber	Part #	\$Price PerUnit	NameandNumber	Part #	\$Price PerUnit
			24.) Screw (4/40x6.0mm)(roundhead)	IA-0000003	0.15
1.) Diaphragm(black) (3rib)(26.0x50.0x10.0mm)(notchedtopcorners) (2centermountingplugs)(rubber)	FI-0000017	2.00	25.) Screw(nickel) (M3x6.0mm)(roundhead)	IA-0000015	0.15
2.) Shell(green,gold) (PRR)(#9619)	FC-2200287	*65.00	26.) Insulator(black) (top)(square)(pick-up)	BD-0000026	2.00
Shell(blue,black,yellow,gray) (B&O)(#4004)	FC-2200288	*65.00	27.) Truck(black) (non-operating)(2axle)(die-cast) (2holestappedformountingPCboardundercoupler) (trucksidemountfrombottom)	DA-2000022	*25.00
3.) Airhorn(green) (1chime)(PRR)(#9618)(#9619)	FC-2200284	3.00	28.) Truck(black) (non-operating)(2axle)(die-cast) (trucksidemountfrombottom)	DA-2000023	*25.00
Airhorn(black) (1chime)(B&O)(#4003)(#4004)	FC-2100158	3.00	29.) Nut(nickel)(2.5x5.0x7.0mm)	IC-0000008	0.50
4.) Lens(clear) (4.6x6.8x2.7mm)(1.2x8.0mmlenshead) (4ribsforpressfit)	FA-2200016	3.00	30.) Insulator(black) (pick-up)(bottom)(flatw/rect.box)(18.0x30.0mm)	BD-0000039	2.00
5.) Numberboard (blackw/whitenumbers)(sticker)(PRR)(#9619)	FG-2200054	0.25	31.) Pick-up (8.0x11.0mmroller)(28.0mmlong)	BD-0000005	5.00
Numberboard (blackw/whitenumbers)(sticker)(B&O)(#4004)	FG-2200055	0.25	32.) Fuel tank(green) (hasslottedholesforspeaker}(PRR)(#9618)	FC-2200285	*15.00
6.) Lens(clear) (windshield&cabsidewindows)	FA-2200017	6.00	Fuel tank(gray) (hasslottedholesforspeaker}(B&O)(#4003)	FC-2200286	*15.00
7.) Screw (M3x4.0mm)(roundhead)	IA-0000010	0.15	33.) Screw (M3x6.0mm)(roundhead)	IA-0000016	0.15
8.) Bulb(clear) (18v)(smallglobe)(smallscrewbase)	CA-0230001	1.00	34.) T-bar (black) (4.0x20.0mm)(plastic)	IG-0000001	0.50
9.) Bracket(black) (11.2x33.7mm)(9.0mmmountingbase) (w/smallscrewbasesocket)(metal)	IH-0000339	5.00	35.) Proto-Coupler®(black) (44.5mmlong)	DD-0000004	10.00
10.) Screw (4/40x6.0mm)(flathead)	IA-0000038	0.15	36.) Spring(nickel) (6.5x14.0mm)(w/0.5mmthickwire)	IE-0000022	0.50
11.) Wirestrap(black)(metal)(small)	IH-0000012	1.00	37.) Washer (black) (4.5x10.0x0.6mm)	ID-0000041	0.15
12.) Pilot(green) (2screwholesformountingpilot) (PRR)(#9618)(#9619)	DG-2230018	15.00	38.) E-clip(black)(3.0x8.0x0.5mm)	IF-0000002	0.15
Pilot(black) (2screwholesformountingpilot) (B&O)(#4003)(#4004)	DG-2230019	15.00	NS.) Wireharness (100.0mmlongredwirew/eyelet) (powerwirefrompick-up)	BC-0000151	2.00
13.) Chassis(black) (non-poweredAunit)(56.0x272.0mm)(metal)	DH-2200064	*20.00	NS.) Wireharness (100.0mmlongblackwirew/eyelet) (groundwirefromtruckblock)	BC-0000152	2.00
14.) Bolt(black) (8/32x15.0mm)(6.0x8.0mmshank) (1.8x10.0mmslottedhead)	IA-0000088	1.00	NS.) Wireharness (160.0mmlongblackwirew/eyelet) (groundwirefromheadlightbracket)	BC-0000153	2.00
15.) Spring(nickel) (8.0x12.0mm)(0.7mmthickwire)	IE-0000026	0.50	NS.) Wireharness (150.0mmlongwiresw/whitefemale2pinplug) (wireshaveblackwiresshield)(forProto-Coupler®)	BC-0000154	2.00
16.) Screw (M3x16.0mm)(washerhead)(self-drilling)	IA-0000025	0.15			
17.) Wirenut(yellow)	BI-4500003	0.25			
18.) Coupler(black) (non-operating)(39.5mmlong)(screwbase)	DD-0000045	3.00			
19.) Spring(nickel) (centeringspring)	IE-0000027	0.50			
20.) Screw (M2.5x6.0mm)(washerhead)	IA-0000108	0.15			
21.) Wireharness (PCboardw/blackfemale4pinplug) (185.0mmlongwiresw/whitemale2pinplug)	BC-2200046	10.00			
22.) Screw (M2x4.0mm)(roundhead)	IA-0000058	0.15			
23.) Truckside(black) (for2axletruck}(PRR)(#9618)(#9619)(#9618B)	DB-2260001	9.00			
Truckside(gray) (for2axletruck}(B&O)(#4003)(#4004)(#5001)	DB-2260002	9.00			

*RequiresExchange
Allpartsarepricedaseach



FA-2 AA Units Diesel Engines

Non-Powered A Unit Parts



FA-2 B Unit Diesel Engine

Non - Powered B Unit Parts

Name and Number	Part #	\$Price Per Unit
1.) Diaphragm(black) (3rib)(26.0x50.0x10.0mm)(notchedtopcorners) (2centermountingplugs)(rubber)	FI-0000017	2.00
2.) Shell(green,gold) (PRR)(#9618B)	FC-2200289	*65.00
Shell(blue,black,yellow,gray) (B&O)(#5001)	FC-2200290	*65.00
3.) Lens(clear) (4.6x6.8x2.7mm)(1.2x8.0mmlenshead) (4ribsforpressfit)	FA-2200016	3.00
4.) Bolt(black) (8/32x15.0mm)(6.0x8.0mms Shank) (1.8x10.0mmslottedhead)	IA-0000088	1.00
5.) Spring(nickel) (8.0x12.0mm)(0.7mmthickwire)	IE-0000026	0.50
6.) Chassis(black) (non-poweredBunit)(56.0x260.0mm)(metal)	DH-2200065	*20.00
7.) Screw (M3x16.0mm)(washerhead)(self-drilling)	IA-0000025	0.15
8.) Coupler(black) (non-operating)(34.5mmlong)(screwbase)	DD-4000008	3.00
9.) Coupler(black) (non-operating)(39.5mmlong)(screwbase)	DD-0000045	3.00
10.) Spring(nickel) (centeringspring)	IE-0000027	0.50
11.) Screw (M2.5x6.0mm)(washerhead)	IA-0000108	0.15
12.) Wireharness (blackflatmale4pinplug) (210.0mmlongwiresw/whitefemale2pinplug)	BC-2200047	10.00
13.) Wireharness (PCboardw/blackfemale4pinplug) (185.0mmlongwiresw/whitemale2pinplug)	BC-2200046	10.00
14.) Screw (4/40x6.0mm)(roundhead)	IA-0000003	0.15
15.) Wirestrap(black)(metal)(small)	IH-0000012	1.00
16.) Truckside(black) (for2axletruck)(PRR)(#9618)(#9619)(#9618B)	DB-2260001	9.00
Truckside(gray) (for2axletruck)(B&O)(#4003)(#4004)(#5001)	DB-2260002	9.00
17.) Truck(black) (non-operating)(2axle)(die-cast) (2holestappedformountingPCboardundercoupler) (trucksidesmountfrombottom)	DA-2000022	*25.00
18.) Fuel tank(green) (hasslottedholesforspeaker)(PRR)(#9618)	FC-2200285	*15.00
Fuel tank(gray) (hasslottedholesforspeaker)(B&O)(#4003)	FC-2200286	*15.00
19.) Screw (M3x6.0mm)(roundhead)	IA-0000016	0.15
20.) Screw (M2x4.0mm)(roundhead)	IA-0000058	0.15

*RequiresExchange
Allpartsarepricedaseach

FA-2 B Unit Diesel Engine

Non-Powered B Unit Parts

