

**RAILKING**<sup>®</sup>  
By M.T.H. Electric Trains

30-2230-1

30-2231-1

30-2232-1

30-2233-1

# RDC Budd Cars

## Diesel Engine Set



GL071702



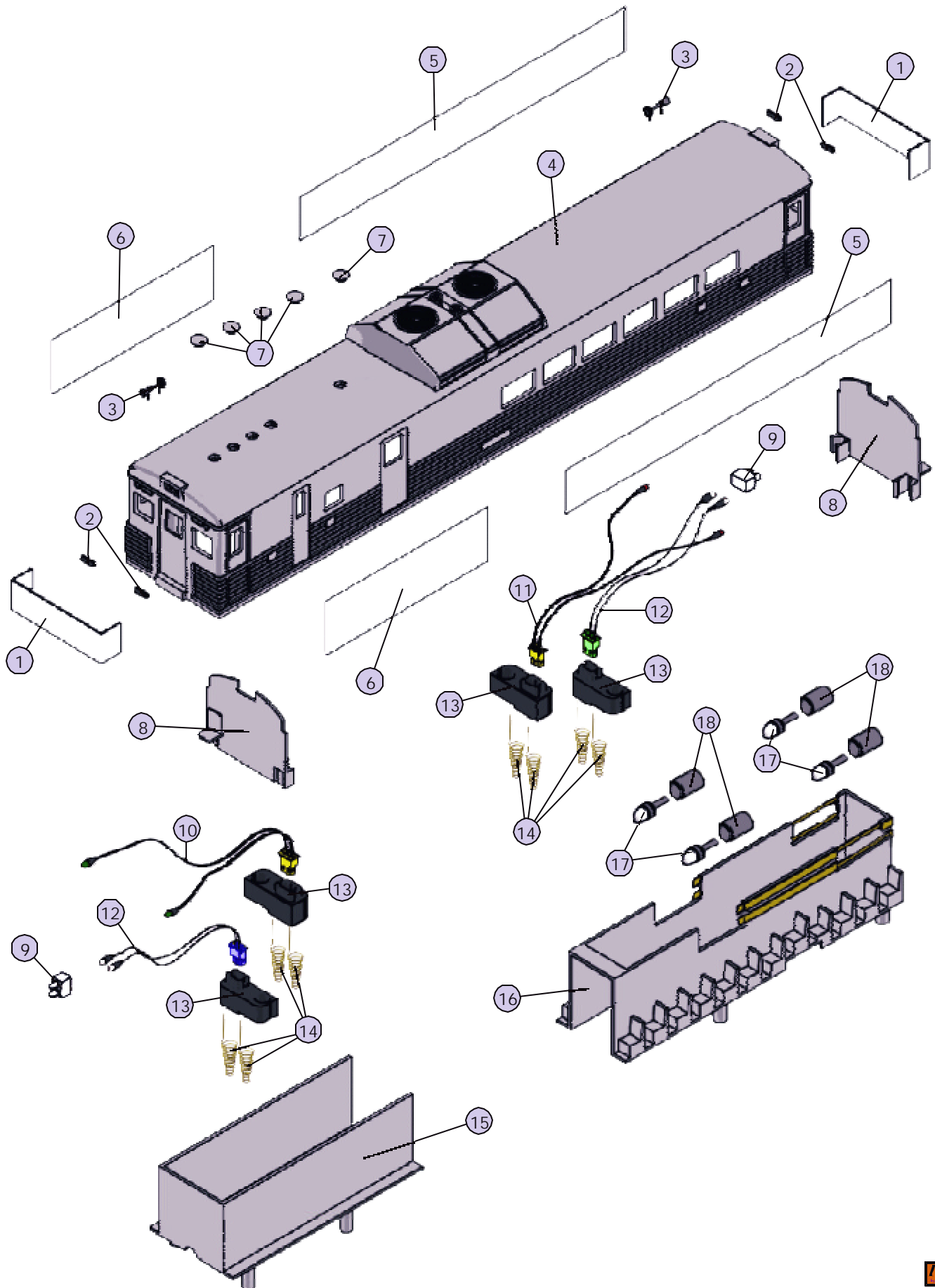
# RDC Budd Cars Diesel Engines

## Powered Unit Engine Parts

Name and Number	Part #	\$Price Per Unit
1.) Window(clear)(front/rear)	FA-2250005	2.00
2.) Numberboard (blackw/whitenumbers)(sticker)(PRR)(#M-409)	FG-2200096	1.00
Numberboard (blackw/whitenumbers)(sticker)(NH)(#121)	FG-2200097	1.00
Numberboard (blackw/whitenumbers)(sticker)(LI)(#3121)	FG-2200098	1.00
Numberboard (blackw/whitenumbers)(sticker)(Amtrak)(#32)	FG-2200099	1.00
3.) Airhorn(nickel)(1chime)	FC-2100118	3.00
4.) Shell(silver, orange,black) (PRR)(#M-409)	FC-2200361	*85.00
Shell(black,white,orange) (NH)(#121)	FC-2200362	*85.00
Shell(silver, orange) (LI)(#3121)	FC-2200363	*85.00
Shell(silver, red,white,blue) (Amtrak)(#32)	FC-2200364	*85.00
5.) Window(clear) (30.0x170.0mm)(sidesrear)	FA-2250003	1.00
6.) Window(clear) (30.0x85.0mm)(sidesfront)	FA-2250004	1.00
7.) Vent ( silver)(plastic) (PRR)(#M-409)(LI)(#3121)(Amtrak)(#32)	FC-2200143	1.00
Vent ( black)(plastic) (NH)(#121)	FC-2200365	1.00
8.) Wireshield(gray) (interiordetailw/engineerseat)(ends)	FC-2200144	4.00
9.) Lens(clear) (3.2x9.8x4.7x8.8mmlens)(3.0x2.5mmlensheads) (headlight/reverselight)	FA-0000120	2.00
10.) L.E.D.s(green)(6v)(2) (100.0mmlongwiresw/yellowmale2pinplug)	CC-0000027	5.00
11.) L.E.D.s(red)(6v)(2) (100.0mmlongwiresw/yellowmale2pinplug)	CE-0000019	5.00
12.) Bulbs(clear)(6v)(2) (100.0mmlongwiresw/blackmale2pinplug) (grainofwheat)	CC-0000037	4.00
13.) Contactspringbase(black) (plastic)(for1male2pinplug)	BH-0000001	2.00
14.) Contactspring(copper)	IE-0000015	0.50
15.) Interiordetail(gray) (front)(poweredunit)(plastic)	FC-2200146	*10.00
16.) Interiordetailw/seats (rear)(poweredunit)(plastic) (w/seats&powerstripsforlighting)	FC-2200147	*10.00
17.) Bulb(clear) (18v)(w/whitehoodedbase)(2barewiresoffbulb) (3.0x6.5mmgrainofwheatbulb)	CG-0000047	1.50
18.) Socket(white) (plastic)(6.9x10.0mm)(forpluginbulbs)	CH-0000042	1.00

\*RequiresExchange  
Allpartsarepricedaseach

# RDC Budd Cars Diesel Engines Engine Parts



# RDC Budd Cars Diesel Engines

## Powered Unit Chassis Parts

Name and Number	Part #	\$Price Per Unit	Name and Number	Part #	\$Price Per Unit
1.) Wirenut(yellow)	BI-4500003	0.25	28.) Ladder(silver)(left)	FC-2200369	3.00
2.) Screw	IA-0000296	0.15	(LI)(#3121)(#3121)(Amtrak)(#32)(#31)		
3.) Contactspringboard(green)	BH-0000071	3.00	29.) Screw	IA-0000057	0.15
(22.0x28.5mm)(2mountingholes)			(M3x10.0mm)(roundhead)(self-drillingthreads)		
(4silvercontactpads)			30.) Chassis(black)	DH-2200077	*20.00
4.) Rubberband	BI-4500004	0.50	(54.0x315.0mm)(hasholesforbatterychargerjack)		
(holds wires tomotors)			31.) Screw	IA-0000038	0.15
5.) Motor(RS-365SH)	BE-0000136	25.00	(4/40x6.0mm)(flathead)		
(7.9x17.0mmwormgear)(12.0mmlongthreads)			32.) Wirestrap(black)	IH-0000012	1.00
(9.0x30.0mmblackflywheel)			(metal)(small)		
6.) Motor(RS-365SH)	BE-0000137	25.00	33.) Pilot(silver)	DG-2200002	20.00
(7.9x17.0mmwormgear)(12.0mmlongthreads)			(pilothas2screwholesformountingpilot)		
(9.0x30.0mmwhiteflywheelw/blackstripes)			(PRR)(#M-409)(#M-407)(LI)(#3121)(#3121)		
(w/blackplastictachboardbracket)			(Amtrak)(#32)(#31)		
7.) Motormount(black)	BI-0000009	15.00	Pilot(black)	DG-2200003	20.00
8.) Screw(yellowZink)	IA-0000001	0.15	(pilothas2screwholesformountingpilot)		
(M2.5x6.0mm)(roundhead)(w/lockwasher)			(NH)(#121)(#120)		
9.) Screw	IA-0000012	0.15	34.) Screw	IA-0000025	0.15
(M3x14.0mm)(roundhead)(w/lockwasher)			(M3x16.0mm)(washerhead)(self-drilling)		
10.) Batterychargerjack(complete)	BG-0000001	3.00	35.) Screw	IA-0000021	0.15
11.) Screw	IA-0000058	0.15	(4/40x4.0mm)(roundhead)		
(M2x4.0mm)(roundhead)			36.) Screw	IA-0000003	0.15
12.) Spacer(black)	ID-0000071	0.15	(4/40x6.0mm)(roundhead)		
(3.0x6.0x4.3mm)(plastic)			37.) Screw(nickel)	IA-0000015	0.15
13.) Volumepot	BI-0000040	5.00	(M3x6.0mm)(roundhead)		
(smallvolumepot)(bluew/greenboard)			38.) Insulator(black)	BD-0000015	2.00
14.) Screw	IA-0000035	0.15	(top)(square)(pick-up)		
(M3x8.0mm)(roundhead)			39.) Truckside(silver)	DB-2200017	9.00
15.) Insulator(clear)	ID-0000024	0.15	(fits2axletruck)(rightfrontonly)		
(13.0x19.0x0.1mm)(singlehole)			(hasaholeformountingladder)		
16.) Voltagereregulator	AG-0000032	3.00	(trucksidescrewsmountfrombottom)		
(LM2937ET)			(LI)(#3121)(#3121)(Amtrak)(#32)(#31)		
17.) Insulator(white)	ID-0000025	0.15	Truckside(black)	DB-2200018	9.00
(washer)(3.0x6.0x3.0mm)(plastic)			(fits2axletruck)(rightfrontonly)		
18.) Screw	IA-0000016	0.15	(hasaholeformountingladder)		
(M3x6.0mm)(roundhead)			(trucksidescrewsmountfrombottom)		
19.) Boards(Proto-Sound®2.0)	AE-0000001	*200.00	(PRR)(#M-409)(#M-407)(NH)(#121)(#120)		
(w/Rommemory)(5vboard)			40.) Truckside(silver)	DB-2200019	9.00
20.) Bracket(Aluminum)	IH-0000237	3.00	(fits2axletruck)(leftfrontonly)		
(forProto-Sound®2.0boards)(tappedfor6/32screw)			(hasaholeformountingladder)		
(15.0x44.0mm)(10.5mmstep)			(trucksidescrewsmountfrombottom)		
21.) Screw	IA-0000103	0.15	(LI)(#3121)(#3121)(Amtrak)(#32)(#31)		
(6/32x12.0mm)(roundhead)			Truckside(black)	DB-2200020	9.00
22.) Batteryleads	BC-0000111	6.00	(fits2axletruck)(leftfrontonly)		
(195.0mmlongwiresw/smallblackmale2pinplug)			(hasaholeformountingladder)		
(85.0mmlongwiresw/completebatterychargerjack)			(trucksidescrewsmountfrombottom)		
23.) Battery(white)	BG-4000001	10.00	(PRR)(#M-409)(#M-407)(NH)(#121)(#120)		
(8.4volts)(re-chargable)(nickel-cadium)			41.) Truckside(silver)	DB-2200021	9.00
24.) Bracket(black)	IH-0000042	4.00	(fits2axletruck)(LF/RR)		
(battery)(verticalmount)(plastic)			(trucksidescrewsmountfrombottom)		
25.) Tachboard(green)(standard)	AG-0000033	6.00	(LI)(#3121)(#3121)(Amtrak)(#32)(#31)		
26.) Speakercone(black)	BF-0000014	2.00	Truckside(black)	DB-2200022	9.00
(plastic)(11.0x38.0mm)(shavedon2sides)			(fits2axletruck)(LF/RR)		
27.) Ladder(black)(right)	FC-2200366	3.00	(trucksidescrewsmountfrombottom)		
(PRR)(#M-409)(#M-407)(NH)(#121)(#120)			(PRR)(#M-409)(#M-407)(NH)(#121)(#120)		
Ladder(silver)(right)	FC-2200367	3.00	42.) Truckside(silver)	DB-2200023	9.00
(LI)(#3121)(#3121)(Amtrak)(#32)(#31)			(fits2axletruck)(RF/LR)		
28.) Ladder(black)(left)	FC-2200368	3.00	(trucksidescrewsmountfrombottom)		
(PRR)(#M-409)(#M-407)(NH)(#121)(#120)			(LI)(#3121)(#3121)(Amtrak)(#32)(#31)		

\*RequiresExchange  
Allpartsarepricedaseach





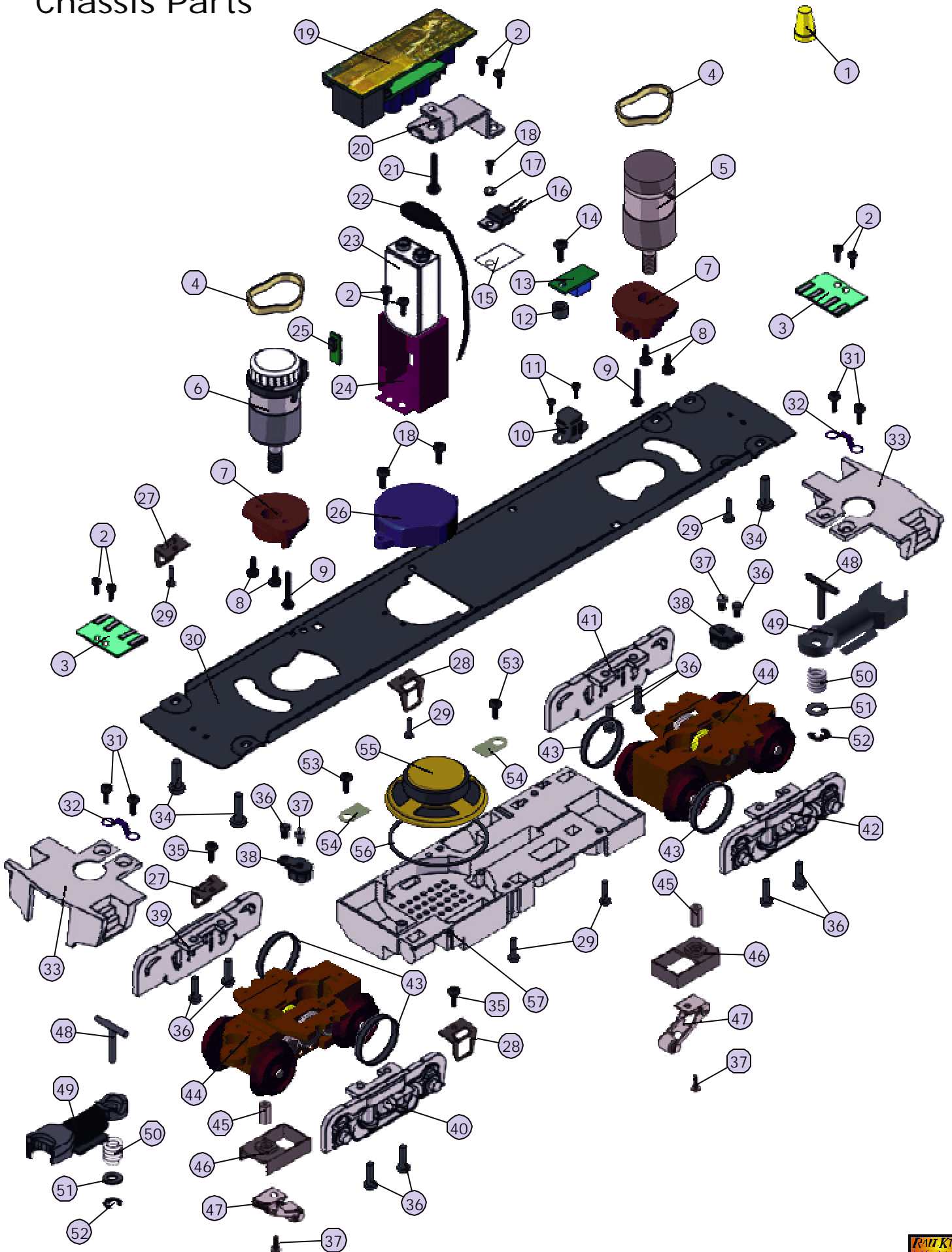
# RDC Budd Cars Diesel Engines

## Powered Unit Chassis Parts

Name and Number	Part #	\$Price Per Unit
42.) Truckside(black) (fits 2 axle truck)(RF/LR) (truckside screws mount from bottom) (PRR)(#M-409)(#M-407)(NH)(#121)(#120)	DB-2200024	9.00
43.) Traction tire(black) (rubber)(4.0x17.0mm)	DE-0000018	0.75
44.) Truck(black)(powered) (2 axle)(2 screw holes for 2 screw mount pilot) (truckside mount from bottom)	DA-2050010	*30.00
45.) Nut(nickel) (2.5x5.0x10.0mm)(for mounting pick-up)	IC-0000005	0.50
46.) Insulator(black) (pick-up)(bottom)(flatw/rect.box)(18.0x30.0mm)	BD-0000039	2.00
47.) Pick-up (8.0x11.0mm roller)(28.0mm long)	BD-0000025	5.00
48.) T-bar (black) (4.0x20.0mm)(plastic)	IG-0000001	0.50
49.) Proto-Coupler®(black) (Proto-Coupler®2.0)(44.5mm long)	DD-0000033	10.00
50.) Spring(nickel) (6.5x14.0mm)(w/0.5mm thick wire)	IE-0000005	0.50
51.) Washer (4.5x10.0x0.5mm)(metal)	ID-0000009	0.15
52.) E-clip (3.0x8.0x0.5mm)(metal)	IF-0000002	0.15
53.) Screw (M3x6.0mm)(round head)(plastic cutting threads)	IA-0000205	0.15
54.) Bracket(brass)(speaker) (6.0x8.5x1.0mm)(rounded corners on one end)	IH-0000372	1.00
55.) Speaker(STAR) (FR-050-A1421)(16ohms)(5W)(50.0mmspeaker)	BF-0000022	10.00
56.) Gasket(black)(speaker)(foam) (46.0x51.0mm)(4.5mm thick)(for 50.0mmspeakers)	IB-0000011	1.00
57.) Fuel tank(black) (plastic)(slotted holes for speaker) (2 mounting posts for speaker) (PRR)(#M-409)(#M-407)(NH)(#121)(#120) (LI)(#3121)(#3121)(Amtrak)(#32)(#31)	FC-2200370	*15.00
NS.) Wireharness (black male 12 pin plug)	BC-2200072	15.00
NS.) Wireharness (black male 7 pin plug) (255.0mm long wires w/standard tachboard) (105.0mm long black & red wires)	BC-0000172	10.00
NS.) Wireharness (black male 5 pin plug)(for motors) (175.0mm & 205.0mm long yellow & white wires)	BC-0000184	4.00
NS.) Wireharness(for speaker) (90.0mm long wires w/white male 2 pin plug)	BC-2100022	3.00
NS.) Wireharness (110.0mm long wires w/black male 2 pin plug) (black wire shield on wires)(for Proto-Coupler®)	BC-2100017	4.00
NS.) Wireharness (180.0mm long red & black wires w/eyelets) (black wire shield on wires)(power wires from pick-up)	BC-2100020	4.00

\*Requires Exchange  
All parts are priced as each

# RDC Budd Cars Diesel Engines Chassis Parts



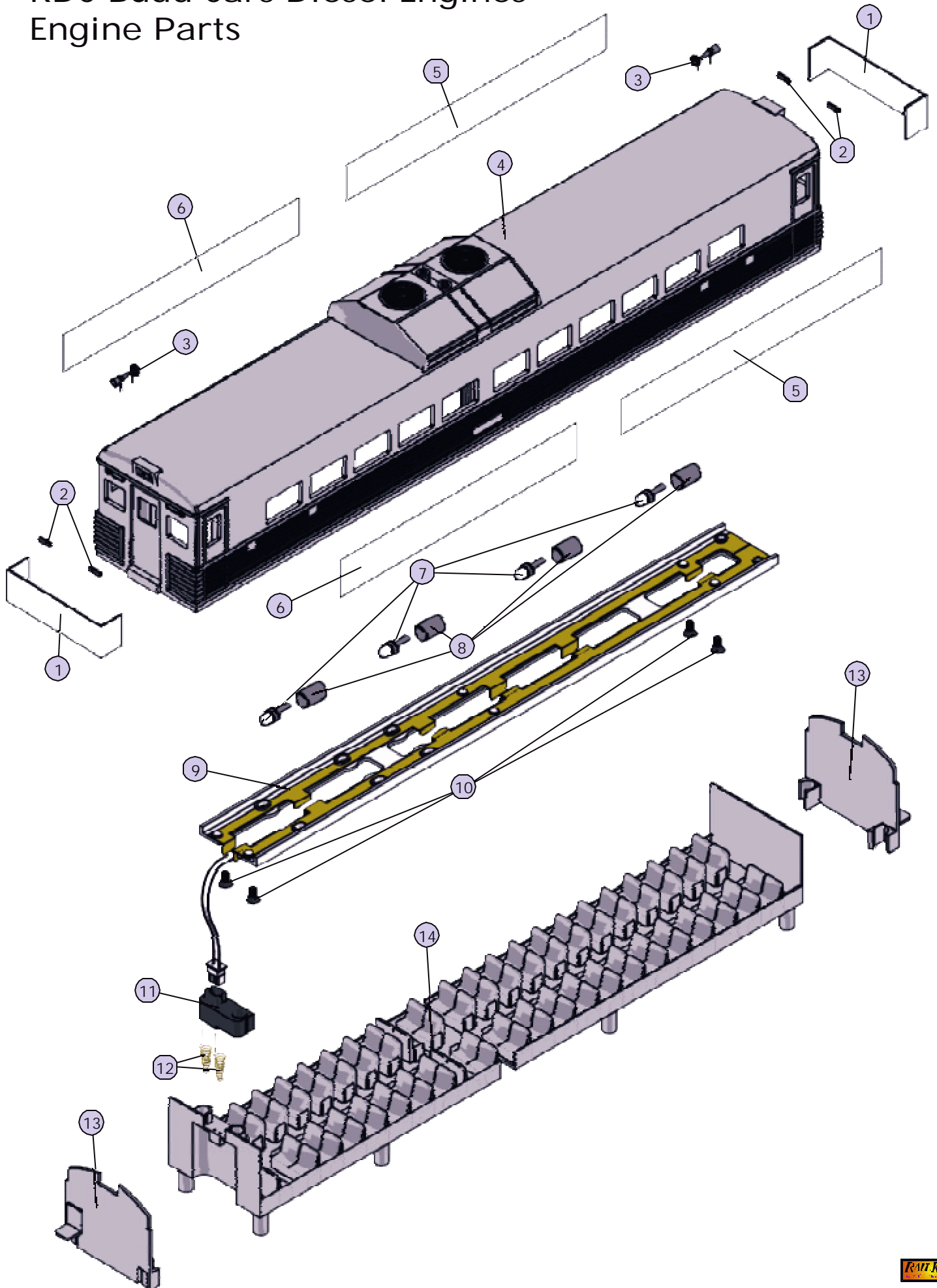
# RDC Budd Cars Diesel Engines

## Non - Powered Unit Engine Parts

NameandNumber	Part #	\$Price PerUnit
1.) Window(clear)(front/rear)	FA-2250005	2.00
2.) Numberboard (blackw/whitenumbers)(sticker)(PRR)(#M-407)	FG-2200100	1.00
Numberboard (blackw/whitenumbers)(sticker)(NH)(#120)	FG-2200101	1.00
Numberboard (blackw/whitenumbers)(sticker)(LI)(#3101)	FG-2200102	1.00
Numberboard (blackw/whitenumbers)(sticker)(Amtrak)(#31)	FG-2200103	1.00
3.) Airhorn(nickel)(1chime)	FC-2100118	3.00
4.) Shell(silver, orange,black) (PRR)(#M-407)	FC-2200371	*85.00
Shell(black,white,orange) (NH)(#120)	FC-2200372	*85.00
Shell(silver, orange) (LI)(#3101)	FC-2200373	*85.00
Shell(silver, red,white,blue) (Amtrak)(#31)	FC-2200374	*85.00
5.) Window(clear) (30.0x170.0mm)(sidesrear)	FA-2250003	1.00
6.) Window(clear) (30.0x145.0mm)(sidesfront)	FA-2250006	1.00
7.) Bulb(clear) (18v)(w/whitehoodedbase)(2barewiresoffbulb) (3.0x6.5mmgrainofwheatbulb)	CG-0000047	1.50
8.) Socket(white) (plastic)(6.9x10.0mm)(forpluginbulbs)	CH-0000042	1.00
9.) Bulbguide(30.0x280.0mm) (85.0mmlongwiresw/blackmale2pinplug)	CH-0000027	10.00
10.) Screw (M3x6.0mm)(flathead)(plasticcuttingthreads)	IA-0000261	0.15
11.) Contactspringbase(black) (plastic)(for1male2pinplug)	BH-0000001	2.00
12.) Contactspring(copper)	IE-0000015	0.50
13.) Wireshield(gray) (interiordetailw/engineerseat)(ends)	FC-2200144	4.00
14.) Interiordetail(gray) (w/ seatdetail)	FC-2200155	*10.00

\*RequiresExchange  
Allpartsarepricedaseach

# RDC Budd Cars Diesel Engines Engine Parts



# RDC Budd Cars Diesel Engines

## Non-Powered Unit Chassis Parts

Name and Number	Part #	\$Price Per Unit
1.) Lens (clear) (3.2x9.8x4.7x8.8mm lens)(3.0x2.5mm lens heads) (headlight/reverse light)	FA-0000120	2.00
2.) Bulbs (clear)(6v)(2) (100.0mm long wires w/black male 2pin plug) (grain of wheat)	CC-0000037	4.00
3.) Bulbs (clear)(6v)(2) (100.0mm long wires w/black male 2pin plug) (grain of wheat)	CC-0000037	4.00
4.) L.E.D.s (red)(6v)(2) (100.0mm long wires w/yellow male 2pin plug)	CE-0000019	5.00
5.) L.E.D.s (green)(6v)(2) (100.0mm long wires w/yellow male 2pin plug)	CC-0000027	5.00
6.) Wire nut (yellow)	BI-4500003	0.25
7.) Contact spring base (black) (plastic)(for 1 male 2pin plug)	BH-0000001	2.00
8.) Contact spring (copper)	IE-0000015	0.50
9.) Wire harness (blue male 2pin plug) (45.0mm long wires w/green female 2pin plug) (375.0mm long wires w/blue female 2pin plug)	BC-2200073	4.00
10.) Screw (M3x6.0mm)(round head)	IA-0000016	0.15
11.) CV board (w/ blue & yellow female 2pin plugs) (red & black wires off of board)	AG-0000026	20.00
12.) Chassis (black) (54.0x375.0mm)(non-powered unit)	DH-2200078	*20.00
13.) Bolt (8/32x15.0mm)(1.8x10.0mm slotted head) (6.0x8.0mm oversized shank)	IA-0000088	1.00
14.) Spring (nickel) (8.0x12.0mm)(w/0.7 thick wire)	IE-0000026	0.50
15.) Screw (M3x3.0mm)(round head)	IA-0000296	0.15
16.) Contact spring board (green) (22.0x28.5mm)(2 mounting holes) (4 silver contact pads)	BH-0000071	3.00
17.) Screw (M3x16.0mm)(washer head)(self-drilling)	IA-0000025	0.15
18.) Screw (4/40x6.0mm)(flat head)	IA-0000038	0.15
19.) Pilot (silver) (pilot has 2 screw holes for mounting pilot) (PRR)(#M-409)(#M-407)(LI)(#3121)(#3121) (Amtrak)(#32)(#31) Pilot (black) (pilot has 2 screw holes for mounting pilot) (NH)(#121)(#120)	DG-2200002	20.00
20.) Screw (4/40x6.0mm)(round head)	IA-0000003	0.15
21.) Screw (nickel) (M3x6.0mm)(round head)	IA-0000015	0.15
22.) Insulator (black) (top)(square)(pick-up)	BD-0000015	2.00
23.) Fuel tank (black) (plastic)(slotted holes for speaker) (2 mounting posts for speaker) (PRR)(#M-409)(#M-407)(NH)(#121)(#120) (LI)(#3121)(#3121)(Amtrak)(#32)(#31)	FC-2200370	*15.00

Name and Number	Part #	\$Price Per Unit
24.) Screw (M3x10.0mm)(round head)(self-drilling threads)	IA-0000057	0.15
25.) T-bar (black)(plastic)	IG-0000001	0.50
26.) Coupler (black) (mechanical)(44.6mm long)(T-bar mounting) (armature pin is 25.0mm out from end)	DD-0000009	3.00
27.) Armature (black) (38.0mm long)(T-bar mounting)(2.4mm coupler pin) (thumb tack is 30.0mm out from end)(new design) (armature pin is 35.5mm out from end)	DD-0000060	2.00
28.) Spring (nickel) (6.4x10.0mm)(w/0.5mm thick wire)	IE-0000070	0.50
29.) Washer (black) (cup shaped for spring to fit in)(4.6x8.5x2.0mm) (inside 7.0x1.0mm)(plastic)	ID-0000060	0.15
30.) E-clip (black) (3.0x8.0x0.5mm)	IF-0000002	0.15
31.) Truck side (silver) (fits 2 axle truck)(LF/RR) (truck side screws mount from bottom) (LI)(#3121)(#3121)(Amtrak)(#32)(#31) Truck side (black) (fits 2 axle truck)(LF/RR) (truck side screws mount from bottom) (PRR)(#M-409)(#M-407)(NH)(#121)(#120)	DB-2200021	9.00
32.) Truck side (silver) (fits 2 axle truck)(RF/LR) (truck side screws mount from bottom) (LI)(#3121)(#3121)(Amtrak)(#32)(#31) Truck side (black) (fits 2 axle truck)(RF/LR) (truck side screws mount from bottom) (PRR)(#M-409)(#M-407)(NH)(#121)(#120)	DB-2200022	9.00
33.) Truck (black)(non-powered) (2 axle)(2 holes tapped for mounting pilot) (2 tapped holes under coupler mount for PC board) (tapped for 8/32 mounting screw)(die-cast)	DA-2000029	*30.00
34.) Nut (nickel) (2.5x5.0x10.0mm)(for mounting pick-up)	IC-0000005	0.50
35.) Insulator (black) (pick-up)(bottom)(flat w/rect.box)(18.0x30.0mm)	BD-0000039	2.00
36.) Pick-up (8.0x11.0mm roller)(28.0mm long)	BD-0000025	5.00
NS.) Wire harness (180.0mm long red & black wires w/eyelets) (black wire shield on wires)(power wires from pick-up)	BC-2100020	4.00

\*Requires Exchange  
All parts are priced as each



# RDC Budd Cars Diesel Engines Chassis Parts

