

RAILKING[®]
By M.T.H. Electric Trains

30-2251-1
30-2252-1
30-2253-1
30-2254-1

Railking Scale RS-27 Diesel Engine

Scale GP-9 drawing being temporarily
used for reference for this model



GL070102



Railking Scale RS-27 Diesel Engine

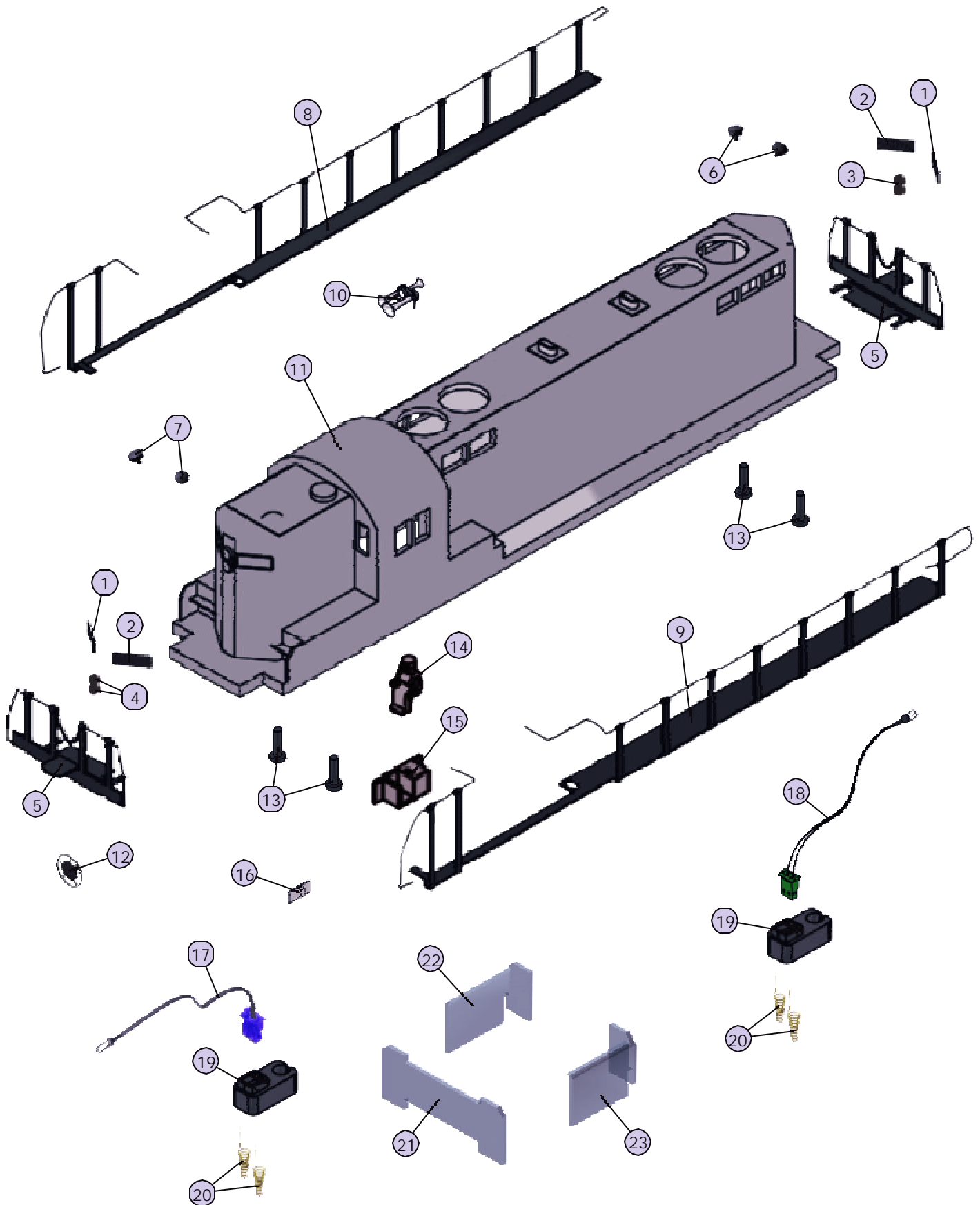
Shell Parts

NameandNumber	Part#	\$Price PerUnit	NameandNumber	Part #	\$Price PerUnit
1.) Numberboard (blackw/whitenumbers)(leftrear/rightfront) (UP)(#675)	FG-2200068	2.00	9.) Handrail(green) (right)(C&NW)(#900)(#903)	FC-2220042	12.00
Numberboard (blackw/whitenumbers)(leftrear/rightfront) (C&NW)(#900)	FG-2200069	2.00	Handrail(white) (right)(SOO)(#415)(#416)	FC-2220043	12.00
Numberboard (whitew/blacknumbers)(leftrear/rightfront) (SOO)(#415)	FG-2200070	2.00	Handrail(green) (right)(PRR)(#2400)(#2407)	FC-2220044	12.00
Numberboard (blackw/whitenumbers)(leftrear/rightfront) (PRR)(#2400)	FG-2200071	2.00	10.) Airhorns(gray) (3chime)(UP)(#675)(#678)	FC-2100062	5.00
2.) Numberboard (blackw/whitenumbers)(rightrear/leftfront) (UP)(#675)	FG-2200072	2.00	Airhorns(green) (3chime)(C&NW)(#900)(#903)	FC-2100842	5.00
Numberboard (blackw/whitenumbers)(rightrear/leftfront) (C&NW)(#900)	FG-2200073	2.00	Airhorns(white) (3chime)(SOO)(#415)(#416)	FC-2200322	5.00
Numberboard (whitew/blacknumbers)(rightrear/leftfront) (SOO)(#415)	FG-2200074	2.00	Airhorns(green) (3chime)(PRR)(#2400)(#2407)	FC-2200323	5.00
Numberboard (blackw/whitenumbers)(rightrear/leftfront) (PRR)(#2400)	FG-2200075	2.00	11.) Shell(yellow,red,gray) (UP)(#675)	FC-2200324	*100.00
3.) Lens(clear)(reverselight) (3.0x3.0mmlenshead)(2)(6.0x6.0x7.0mmbase) (cutoutonsides)(bulbsheldinw/heatshrinktube)	FA-0000118	2.00	Shell(yellow,green) (C&NW)(#900)	FC-2200325	*100.00
4.) Lens(clear) (3.0x2.3mmlens)(requires2)(headlight)	FA-0000119	1.00	Shell(white,red,black) (SOO)(#415)	FC-2200326	*100.00
5.) Handrail(gray) (front&rear)(UP)(#675)(#678)	FC-2250075	8.00	Shell(green,gold) (PRR)(#2400)	FC-2200327	*100.00
Handrail(green) (front&rear)(C&NW)(#900)(#903)	FC-2250076	8.00	12.) Brakewheel(yellow) (UP)(#675)	FC-2200328	2.00
Handrail(white) (front&rear)(SOO)(#415)(#416)	FC-2250077	8.00	Brakewheel(yellow) (C&NW)(#900)	FC-2200329	2.00
Handrail(green&yellow) (front&rear)(PRR)(#2400)(#2407)	FC-2250078	8.00	Brakewheel(red) (SOO)(#415)	FC-2200330	2.00
6.) Sand fill cap(gray) (2.5x5.5mm)(plastic)(UP)(#675)(#678)	FC-2200316	1.00	Brakewheel(green) (PRR)(#2400)	FC-2200331	2.00
Sand fill cap(green) (2.5x5.5mm)(plastic)(C&NW)(#900)(#903)	FC-2200317	1.00	13.) Screw (M3x16.0mm)(washerhead)(self-drilling)	IA-0000025	0.15
Sand fill cap(red) (2.5x5.5mm)(plastic)(SOO)(#415)(#416)	FC-2200318	1.00	14.) Engineer(blackman)	FI-0000030	5.00
Sand fill cap(green) (2.5x5.5mm)(plastic)(PRR)(#2400)(#2407)	FC-2200319	1.00	Engineer(whiteman)	FI-0000001	5.00
7.) Sand fill cap(yellow) (2.5x5.5mm)(plastic)(UP)(#675)(#678)	FC-2200320	1.00	15.) Engineerbase(gray)(rightside)	FI-0000025	1.00
Sand fill cap(yellow) (2.5x5.5mm)(plastic)(C&NW)(#900)(#903)	FC-2200321	1.00	16.) Wireclip(white) (plastic)(4.0x9.0x3.5mm)	IH-0000313	1.00
Sand fill cap(red) (2.5x5.5mm)(plastic)(SOO)(#415)(#416)	FC-2200318	1.00	17.) Bulbs(clear)(6v)(2) (170.0mmlongwiresw/bluemale2pinplug)	CA-0000065	4.00
Sand fill cap(green) (2.5x5.5mm)(plastic)(PRR)(#2400)(#2407)	FC-2200319	1.00	18.) Bulbs(clear)(6v)(2) (100.0mmlongwiresw/greenmale2pinplug)	CF-0000028	4.00
8.) Handrail(gray) (right)(UP)(#675)(#678)	FC-2210041	12.00	19.) Contactspringbase(black) (plastic)(for1male2pinplug)	BH-0000001	2.00
Handrail(green) (right)(C&NW)(#900)(#903)	FC-2210042	12.00	20.) Contactspring(copper)	IE-0000015	0.50
Handrail(white) (right)(SOO)(#415)(#416)	FC-2210043	12.00	21.) Lens(clear)(front)	FA-2200021	3.00
Handrail(green) (right)(PRR)(#2400)(#2407)	FC-2210044	12.00	22.) Lens(clear)(right/rightrear)	FA-2200022	3.00
9.) Handrail(gray) (right)(UP)(#675)(#678)	FC-2220041	12.00	23.) Lens(clear)(left/leftrear)	FA-2200023	3.00

*Requires Exchange
Allpartsarepricedaseach



Railking Scale RS-27 Diesel Engine Shell Parts



Railking Scale RS-27 Diesel Engine

Chassis Parts

Name and Number	Part #	\$Price Per Unit	Name and Number	Part #	\$Price Per Unit
1.) Wirenut(yellow)	BI-4500003	0.25	30.) Battery leads (130.0mmlongwiresw/smallblackmale2pinplug)	BC-0000181	6.00
2.) Boards(Proto-Sound® 2.0) (w/Rommemory)(5vboard)	AE-0000001	*200.00	(80.0mmlongwiresw/batterychargerjack)		
3.) Bracket(Aluminum) (forProto-Sound® 2.0boards)(tappedfor6/32screw)	IH-0000370	4.00	31.) Battery(white) (8.4volts)(re-chargable)(nickel-cadium)	BG-4000001	10.00
(15.0x80.0mm)(15.5mm&6.0mmsteps)			32.) Bracket(black) (battery)(verticalmount)(plastic)	IH-0000042	4.00
4.) Screw (6/32x12.0mm)(roundhead)	IA-0000103	0.15	33.) Tachboard(green) (w/1.5mmspacerbetweenboard&opticalsensormount)	AG-0000047	6.00
5.) Screw (M3x3.0mm)(roundhead)	IA-0000296	0.15	34.) Screw (4/40x6.0mm)(flathead)	IA-0000038	0.15
6.) Screw (M3x6.0mm)(roundhead)	IA-0000016	0.15	35.) Wirestrap(black) (metal)(small)	IH-0000012	1.00
7.) Insulator(white) (washer)(3.0x6.0x3.0mm)(plastic)	ID-0000025	0.15	36.) Pilot(gray) (pilothas2screwholesformountingpilot)	DG-2150059	20.00
8.) Voltageregulator (LM2937ET)	AG-0000032	3.00	(UP)(#675)(#678)		
9.) Insulator(clear) (13.0x19.0x0.1mm)(singlehole)	ID-0000024	0.15	Pilot(green) (pilothas2screwholesformountingpilot)	DG-2150060	20.00
10.) Motorcover(gray) (hasholesnearbottomtomountinteriorlightsbrackets)	BI-0000068	7.00	(C&NW)(#900)(#903)		
11.) Bracket(black)(metal) (6.5x10.0mm)(7.5mmstep)(lefthandedlip)	IH-0000352	2.00	Pilot(black) (pilothas2screwholesformountingpilot)	DG-2150061	20.00
(formountingcabinteriorbulbstomotorcover)			(SOO)(#415)(#416)		
12.) Bracket(black)(metal) (6.5x10.0mm)(7.5mmstep)(righthandedlip)	IH-0000351	2.00	Pilot (greenw/yellowstepedges)	DG-2150062	20.00
(formountingcabinteriorbulbstomotorcover)			(pilothas2screwholesformountingpilot)		
13.) Screw (M2.4x3.0mm)(roundhead)(plasticcuttingthreads)	IA-0000350	0.15	(PRR)(#2400)(#2407)		
14.) Grommet(black) (cupped)(rubber)	IH-0000144	0.50	37.) T-bar (black) (4.0x20.0mm)(plastic)	IG-0000001	0.50
15.) Bulbs(clear)(6v)(2) (70.0mmlongwiresw/yellowmale2pinplug)	CG-0000053	4.00	38.) Proto-Coupler®(black) (Proto-Coupler® 2.0)(51.0mmlong)	DD-0000032	10.00
(grainofwheat)(cabinteriorlights)			39.) Spring(nickel) (6.5x14.0mm)(w/0.5mmthickwire)	IE-0000005	0.50
16.) Screw (M2x4.0mm)(roundhead)	IA-0000058	0.15	40.) Washer (4.5x10.0x0.5mm)(metal)	ID-0000009	0.15
17.) Batterychargerjack(complete)	BG-0000001	3.00	41.) E-clip (3.0x8.0x0.5mm)(metal)	IF-0000002	0.15
18.) Screw (M3x8.0mm)(roundhead)	IA-0000035	0.15	42.) Truck(black) (powered)(2axle)(trucksidemountfrombottom)	DA-2050010	*30.00
19.) Volumepot (smallvolumepot)(bluew/greenboard)	BI-0000040	5.00	(2screwholesfor2screwmountpilot)		
20.) Spacer(black) (3.0x6.0x4.3mm)(plastic)	ID-0000071	0.15	43.) Screw (4/40x6.0mm)(roundhead)	IA-0000003	0.15
21.) Contactspringboard(green) (12.0x19.8mm)(2mountingholes)	BH-0000070	3.00	44.) Screw(nickel) (M3x6.0mm)(roundhead)	IA-0000015	0.15
(2silvercontactpads)			45.) Insulator(black) (top)(square)(pick-up)	BD-0000015	2.00
22.) Chassis(black) (57.0x326.0mm)(hasholesforbatterychargerjack)	DH-2200072	*20.00	46.) Truckside(silver) (fits2axlescaletruck)	DB-2150009	7.00
23.) Rubberband (holds wires tomotors)	BI-4500004	0.50	(trucksidescrawmountfrombottom)		
24.) Motor(RS-385PH) (7.9x17.0mmwormgear)(12.0mmlongthreads)	BE-0000124	25.00	(UP)(#675)(#678)		
(9.0x27.0mmblackflywheel)			Truckside(black) (fits2axlescaletruck)	DB-2150010	7.00
25.) Motor(RS-385PH) (7.9x17.0mmwormgear)(12.0mmlongthreads)	BE-0000125	25.00	(trucksidescrawmountfrombottom)		
(9.0x27.0mmwhiteflywheelw/blackstripes)			(C&NW)(#900)(#903)(SOO)(#415)(#416)		
(w/blackplastictachboardbracket)			(PRR)(#2400)(#2407)		
26.) Motormount(black)	BI-0000009	15.00	47.) Bracket(brass) (speaker)(12.0x9.7mm)(5.0mmstep)	IH-0000322	1.00
27.) Screw (M3x14.0mm)(roundhead)(w/lockwasher)	IA-0000012	0.15	(roundedendbymountinghole)		
28.) Screw(yellowZink) (M2.5x6.0mm)(roundhead)(w/lockwasher)	IA-0000001	0.15	48.) Speaker(STAR) (FR-050-A1421)(16ohms)(5W)(50.0mmspeaker)	BF-0000022	10.00
29.) Speakercone(black) (plastic)(11.0x38.0mm)(shavedon2sides)	BF-0000014	2.00			

*Requires Exchange
All parts are priced as each



Railking Scale RS-27 Diesel Engine

Chassis Parts

Name and Number	Part #	\$Price Per Unit
49.) Gasket (black)(speaker)(foam) (46.0x51.0mm)(4.5mmthick)(for50.0mmspeakers)	IB-0000011	1.00
50.) Fuel tank (black) (UP)(#675)(#678)(C&NW)(#900)(#903) (SOO)(#415)(#416)(PRR)(#2400)(#2407)	FC-2200332	*20.00
51.) Screw (M3x4.0mm)(roundhead)	IA-0000010	0.15
52.) Traction tire (black) (rubber)(4.0x17.0mm)	DE-0000018	0.75
53.) Nut (nickel) (2.5x5.0x10.0mm)(formountingpick-up)	IC-0000005	0.50
54.) Insulator (black) (pick-up)(bottom)(flatw/rect.box)(18.0x30.0mm)	BD-0000039	2.00
55.) Pick-up (8.0x11.0mmroller)(28.0mmlong)	BD-0000025	5.00
56.) Snowplow (gray) (UP)(#675)(#678)	FH-2130004	4.00
Snowplow (green) (C&NW)(#900)(#903)	FH-2130015	4.00
Snowplow (black) (SOO)(#415)(#416)	FH-2130001	4.00
Snowplow (green) (PRR)(#2400)(#2407)	FH-2130022	4.00
NS.) Wireharness (blackmale12pinplug)	BC-2200055	15.00
NS.) Wireharness (blackmale7pinplug) (195.0mmlongwiresw/tachboard) (1.5mmspacerontachboard) (70.0mmlongred&blackwires)	BC-2200056	10.00
NS.) Wireharness (blackmale5pinplug)(formotors) (195.0mm&145.0mmlongyellow&whitewires)	BC-2200057	4.00
NS.) Wireharness (forspeaker) (70.0mmlongwiresw/whitemale2pinplug)	BC-2100027	3.00
NS.) Wireharness (whitemale2pinplug) (180.0mmlongred&blackwiresw/2eyelets) (blackwireshieldonwires)(forpick-up)	BC-2200058	4.00
NS.) Wireharness (140.0mmlongwiresw/blackmale2pinplug) (blackwireshieldonwires)(forProto-Coupler®)	BC-0000139	3.00

*Requires Exchange
All parts are priced as each

Railking Scale RS-27 Diesel Engine Chassis Parts

