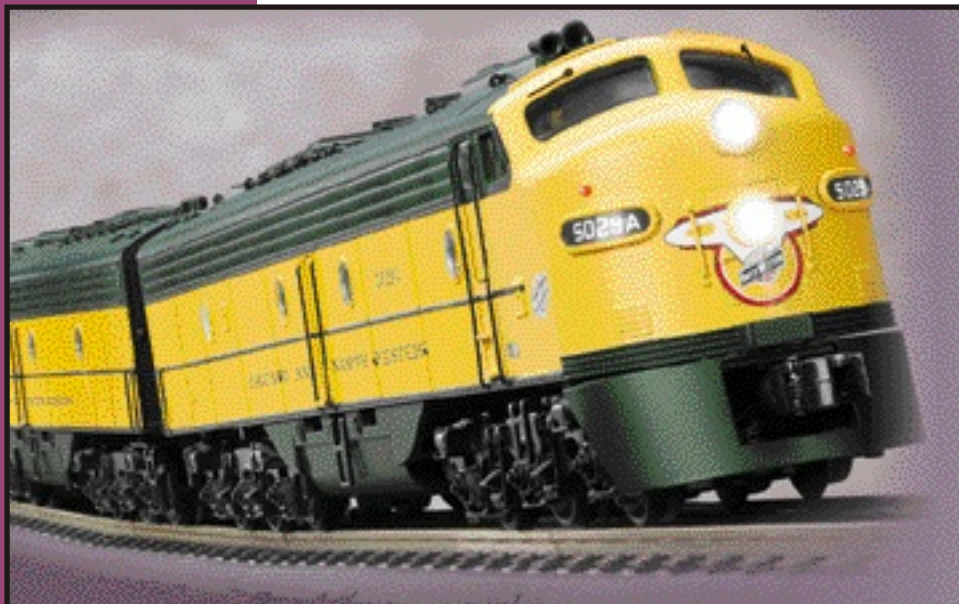




E-8 ABA

Proto-Sound 2.0®

20-2234-1
20-2235-1
20-2236-1
20-2237-1



E-8 A Unit (lead)

Parts

Name and Number	Part #	\$Price Per Unit	Name and Number	Part #	\$Price Per Unit
1.) Diaphragm (3 rib)	FI-0000017	2.00	11.) Fan shroud (large)	FC-2100536	6.00
2.) Shell (Erie)	FC-2100508	*100.00	(C&NW)(green)(# 5029A)(# 5030A)(#5029B)		
(# 833)(# 832)(dark & light green, yellow, black)			12.) Fan shroud (small)	FC-2100537	5.00
2.) Shell (Illinois Central)	FC-2100509	*100.00	(Erie)(dark green)(# 833)(# 832)(833B)		
(# 4025)(brown, orange, yellow, green, black)			12.) Fan shroud (small)	FC-2100538	5.00
2.) Shell (Santa Fe)	FC-2100510	*100.00	(Illinois Central)(brown)(# 4025)(# 4024)(# 4104)		
(# 83)(# 84)(yellow, red, silver, black)			12.) Fan shroud (small)	FC-2100539	5.00
2.) Shell (C&NW)	FC-2100511	*100.00	(Santa Fe)(silver)(# 83)(# 84)(B unit)		
(# 5029A)(yellow, green, black, red)			12.) Fan shroud (small)	FC-2100540	5.00
3.) Lift ring (Erie)	FC-2100512	0.50	(C&NW)(green)(# 5029A)(# 5030A)(#5029B)		
(dark green)(# 833)(# 832)(# 833B)			13.) Vent (Erie)(right)	FC-2100541	9.00
3.) Lift ring (Illinois Central)	FC-2100513	0.50	(dark green)(# 833)(# 832)		
(brown)(# 4025)(# 4024)(# 4104)			13.) Vent (Illinois Central)(right)	FC-2100542	9.00
3.) Lift ring (Santa Fe)	FC-2100514	0.50	(brown)(# 4025)(# 4024)		
(silver)(# 83)(# 84)(B unit)			13.) Vent (Santa Fe)(right)	FC-2100543	9.00
3.) Lift ring (C&NW)	FC-2100515	0.50	(silver)(# 83)(# 84)		
(green)(# 5029A)(# 5030A)(# 5029B)			13.) Vent (C&NW)(right)	FC-2100544	9.00
4.) Handrail (rear)(Erie)	FC-2100516	1.00	(green)(# 5029A)(# 5030A)		
(18.0mm long)(dark green)(# 833)(# 832)(833B)			14.) Vent (Erie)(left)	FC-2100545	9.00
4.) Handrail (rear)(brown)	FC-2100517	1.00	(dark green)(# 833)(# 832)		
(18.0mm long)(Illinois Central)(# 4025)(# 4024)(4104)			14.) Vent (Illinois Central)(left)	FC-2100546	9.00
4.) Handrail (rear)(Santa Fe)	FC-2100518	1.00	(brown)(# 4025)(# 4024)		
(18.0mm long)(silver)(# 83)(# 84)(B unit)			14.) Vent (Santa Fe)(left)	FC-2100547	9.00
4.) Handrail (rear)(C&NW)	FC-2100519	1.00	(silver)(# 83)(# 84)		
(18.0mm long)(green)(# 5029A)(# 5030A)(# 5029B)			14.) Vent (C&NW)(left)	FC-2100548	9.00
5.) Piping (w/ stanchions)(left)	FC-2100520	4.00	(green)(# 5029A)(# 5030A)		
(Erie)(dark green)(# 833)(# 832)(833B)			15.) Door (right middle)	FC-2100549	6.00
5.) Piping (w/ stanchions)(left)	FC-2100521	4.00	(Erie)(dark & light green, yellow)(# 833)(# 832)(833B)		
(Illinois Central)(brown)(# 4025)(# 4024)(# 4104)			15.) Door (right middle)	FC-2100550	6.00
5.) Piping (w/ stanchions)(left)	FC-2100522	4.00	(Illinois Central)(brown, orange, yellow)		
(Santa Fe)(silver)(# 83)(# 84)(B unit)			(# 4025)(# 4024)(# 4104)		
5.) Piping (w/ stanchions)(left)	FC-2100523	4.00	15.) Door (right middle)	FC-2100551	6.00
(C&NW)(green)(# 5029A)(# 5030A)(#5029B)			(Santa Fe)(silver, black, yellow)(# 83)(# 84)(B unit)		
6.) Piping (w/ stanchions)(right)	FC-2100524	4.00	15.) Door (right middle)	FC-2100552	6.00
(Erie)(dark green)(# 833)(# 832)(833B)			(C&NW)(yellow, black)(# 5029A)(# 5030A)(# 5029B)		
6.) Piping (w/ stanchions)(right)	FC-2100525	4.00	16.) Door (left middle)	FC-2100553	6.00
(Illinois Central)(brown)(# 4025)(# 4024)(# 4104)			(Erie)(dark & light green, yellow)(# 833)(# 832)(833B)		
6.) Piping (w/ stanchions)(right)	FC-2100526	4.00	16.) Door (left middle)	FC-2100554	6.00
(Santa Fe)(silver)(# 83)(# 84)(B unit)			(Illinois Central)(brown, orange, yellow)		
6.) Piping (w/ stanchions)(right)	FC-2100527	4.00	(# 4025)(# 4024)(# 4104)		
(C&NW)(green)(# 5029A)(# 5030A)(#5029B)			16.) Door (left middle)	FC-2100555	6.00
7.) Pin (for fan)(black)	FC-2100528	1.00	(Santa Fe)(silver, black, yellow)(# 83)(# 84)(B unit)		
8.) Winterization hatch	FC-2100529	6.00	16.) Door (left middle)	FC-2100556	6.00
(Erie)(dark green)(# 833)(# 832)(833B)			(C&NW)(yellow, black)(# 5029A)(# 5030A)(# 5029B)		
8.) Winterization hatch	FC-2100530	6.00	17.) Pin (door hinge)	FC-2100365	0.25
(Illinois Central)(brown)(# 4025)(# 4024)(# 4104)			(21.3mm long)		
8.) Winterization hatch	FC-2100531	6.00	18.) Hinge (door)(plastic)	FC-2100364	1.00
(Santa Fe)(silver)(# 83)(# 84)(B unit)			19.) Handrail (Erie)	FC-2100557	1.00
8.) Winterization hatch	FC-2100532	6.00	(34.0mm long)(dark green)(# 833)(# 832)(833B)		
(C&NW)(green)(# 5029A)(# 5030A)(#5029B)			19.) Handrail (Illinois Central)	FC-2100558	1.00
9.) Fan (gray)	FC-2100407	2.00	(34.0mm long)(brown)(# 4025)(# 4024)(# 4104)		
(10 blades)(small)			19.) Handrail (Santa Fe)	FC-2100559	1.00
10.) Fan (gray)	FC-2100408	2.00	(34.0mm long)(silver)(# 83)(# 84)(B unit)		
(10 blades)(large)			19.) Handrail (C&NW)	FC-2100560	1.00
11.) Fan shroud (large)	FC-2100533	6.00	(34.0mm long)(green)(# 5029A)(# 5030A)(# 5029B)		
(Erie)(dark green)(# 833)(# 832)(833B)			20.) Lens (clear)	FA-0000066	2.00
11.) Fan shroud (large)	FC-2100534	6.00	(portal)(2.7X10.0mm)		
(Illinois Central)(brown)(# 4025)(# 4024)(# 4104)					
11.) Fan shroud (large)	FC-2100535	6.00			
(Santa Fe)(silver)(# 83)(# 84)(B unit)					

*Requires Exchange
All parts are priced as each



E-8 A Unit (lead)

Parts

Name and Number	Part #	\$Price Per Unit
21.) Air horns (3 horns) (Erie)(dark green)(# 833)(# 832)	FC-2100561	3.00
21.) Air horns (3 horns) (Illinois Central)(brown)(# 4025)(# 4024)	FC-2100562	3.00
21.) Air horns (3 horns) (Santa Fe)(red)(# 83)(# 84)	FC-2100563	3.00
21.) Air horns (3 horns) (C&NW)(green)(# 5029A)(# 5030A)	FC-2100564	3.00
22.) Handrail (Erie) (23.0mm long)(dark green)(# 833)(# 832)	FC-2100565	1.00
22.) Handrail (Illinois Central) (23.0mm long)(brown)(# 4025)(# 4024)	FC-2100566	1.00
22.) Handrail (Santa Fe) (23.0mm long)(red)(# 83)(# 84)	FC-2100567	1.00
22.) Handrail (C&NW) (23.0mm long)(green)(# 5029A)(# 5030A)	FC-2100568	1.00
23.) Door (right front) (Erie)(dark & light green)(# 833)(# 832)	FC-2100569	6.00
23.) Door (right front) (Illinois Central)(brown)(# 4025)(# 4024)	FC-2100570	6.00
23.) Door (right front) (Santa Fe)(red)(# 83)(# 84)	FC-2100571	6.00
23.) Door (right front) (C&NW)(green, yellow)(# 5029A)(# 5030A)	FC-2100572	6.00
24.) Door (left front) (Erie)(dark & light green)(# 833)(# 832)	FC-2100573	6.00
24.) Door (left front) (Illinois Central)(brown)(# 4025)(# 4024)	FC-2100574	6.00
24.) Door (left front) (Santa Fe)(red)(# 83)(# 84)	FC-2100575	6.00
24.) Door (left front) (C&NW)(green, yellow)(# 5029A)(# 5030A)	FC-2100576	6.00
25.) Window lens (clear) (7.3X8.7X2.5mm)(door)	FA-0000067	1.00
26.) Builder's plate (EMD)	FC-2100453	3.00
27.) Handrail (Erie) (45.5mm long)(dark green)(# 833)(# 832)	FC-2100577	1.00
27.) Handrail (Illinois Central) (45.5mm long)(brown)(# 4025)(# 4024)	FC-2100578	1.00
27.) Handrail (Santa Fe) (45.5mm long)(red)(# 83)(# 84)	FC-2100579	1.00
27.) Handrail (C&NW) (45.5mm long)(green)(# 5029A)(# 5030A)	FC-2100580	1.00
28.) Windshield wipers (black)	FC-2100458	1.00
29.) Number board housing (Erie)(dark green)(# 833)(# 832)	FC-2100581	4.00
29.) Number board housing (Illinois Central)(brown)(# 4025)(# 4024)	FC-2100582	4.00
29.) Number board housing (Santa Fe)(red)(# 83)(# 84)	FC-2100583	4.00
29.) Number board housing (C&NW)(yellow)(# 5029A)(# 5030A)	FC-2100584	4.00
30.) Number board (Erie)(# 833)	FG-2100082	1.00
30.) Number board (Illinois Central)(# 4025)	FG-2100083	1.00
30.) Number board (Santa Fe)(# 83)	FG-2100084	1.00
30.) Number board (C&NW)(# 5029A)	FG-2100085	1.00

Parts

Name and Number	Part #	\$Price Per Unit
31.) Lens (mars light)(clear) (8.5mm)	FA-0000068	2.00
32.) Lens (headlight)(clear) (8.0X7.0X6.0mm)	FA-2130006	2.00
33.) Handrail (Erie) (12.5mm long)(dark green)(# 833)(# 832)	FC-2100585	1.00
33.) Handrail (Illinois Central) (12.5mm long)(brown)(# 4025)(# 4024)	FC-2100586	1.00
33.) Handrail (Santa Fe) (12.5mm long)(red)(# 83)(# 84)	FC-2100587	1.00
33.) Handrail (C&NW) (12.5mm long)(green)(# 5029A)(# 5030A)	FC-2100588	1.00
34.) Windshield	FA-0000069	6.00
35.) Spring (door)	IE-0000055	1.00
36.) L.E.D.s (green)(6V) (275.0mm long wires)	CE-0000009	4.00
37.) Contact spring base	BH-0000001	2.00
38.) Contact spring	IE-0000015	0.50
39.) Contact spring board (13.0X21.0X1.0mm)	BH-0000041	2.00
40.) Screw (4/40X4.0mm)(roundhead)	IA-0000021	0.15
41.) Bulbs (grain of wheat) (clear)(6V)(60.0mm long black wires)	CC-0000004	3.00
42.) Bulb (mars light) (clear)(6V)(60.0mm long white wires)	CB-0000003	3.00
43.) Bulb (grain of wheat) (clear)(6V)(60.0mm long blue wires)	CA-0000028	2.00
43.) Screw (4/40X3.0mm)(roundhead)	IA-0000275	0.15
44.) Bulb (grain of wheat) (clear)(6V)(60.0mm long black wires)	CG-0000023	2.00
45.) Screw (4/40X3.0mm)(roundhead)	IA-0000275	0.15
46.) Bracket (metal)(black)	IH-0000227	3.00
47.) Grommet (cupped)	IH-0000144	0.15
48.) Grommet	IH-0000010	0.15
49.) Interior detail	FC-2100467	8.00
50.) Engineer	FI-0000001	5.00
51.) Conductor	FI-0000009	5.00
52.) Screw (4/40X10.0mm)(roundhead)	IA-0000279	0.15
53.) Chassis (black)(A unit) (hole cutout for speaker)	DH-2100023	*15.00
54.) Spacer (black) (3.0X6.0X4.0mm)(plastic)	ID-0000071	0.50
55.) Patch board	AG-0000038	8.00
56.) Screw (4/40X8.0mm)(roundhead)	IA-0000011	0.15
57.) Screw (M3X14.0mm)(roundhead)(w/ lock washer)	IA-0000012	0.15
58.) Screw (yellow zink) (M2.5X6.0mm)(roundhead w/lock washer)	IA-0000001	0.15
59.) Motor mount (black) (fits BE-0000065)	BI-0000048	15.00
60.) Motor (RS-385PH) (8.0X24.0mm worm gear w/ 16.0mm long threads) (9.0X30.0mm flywheel)(brass)	BE-0000065	25.00

*Requires Exchange
All parts are priced as each



E-8 A Unit (lead)

Parts

Name and Number	Part #	\$Price Per Unit	Name and Number	Part #	\$Price Per Unit
61.) Motor (RS-385PH) (8.0X24.0mm worm gear w/ 16.0mm long threads) (9.0X30.0mm flywheel)(black & white flywheel) (has tach board mount)	BE-0000066	25.00	92.) Ladder (black)(right rear) (Erie)(# 833)(# 832)(# 833B) (Illinois Central)(# 4025)(# 4024)(# 4104) (C&NW)(# 5029A)(# 5030A)(# 5029B)	FC-2100477	3.00
62.) Rubber band	BI-4500004	0.50	92.) Ladder (silver)(right rear) (Santa Fe)(# 83)(# 84)(B unit)	FC-2100476	3.00
63.) Wire strap (metal)(white)	IH-0000103	1.00	93.) Ladder (black)(left rear) (Erie)(# 833)(# 832)(# 833B) (Illinois Central)(# 4025)(# 4024)(# 4104) (C&NW)(# 5029A)(# 5030A)(# 5029B)	FC-2100481	3.00
64.) Smoke unit (new P2.0) (20.5mm high smoke stack)	AA-0000026	50.00	93.) Ladder (silver)(left rear) (Santa Fe)(# 83)(# 84)(B unit)	FC-2100480	3.00
65.) Screw (4/40X6.0mm)(roundhead)	IA-0000003	0.15	94.) Pin (black)(9.0mm head) (3.0X9.2mm)(1 e-clip groove)	IG-0000032	1.00
66.) Voltage regulator (LM2937ET)	AG-0000032	3.00	95.) Spring (6.5X6.0mm)(w/ 0.5mm thick wire)	IE-0000059	0.50
67.) Insulator washer	ID-0000025	0.15	96.) E-clip (2.5X6.0X0.5mm)	IF-0000004	0.15
68.) Insulator	ID-0000024	0.15	97.) Bracket (black)(metal)	IH-0000147	2.00
69.) Bolt (8/32X15.0mm) (6.0X8.0mm oversized shank) (1.8X10.0mm slotted head)	IA-0000088	1.00	98.) Truck (powered)(3 axle) (w/ support post at end of truck) (has screw holes for PCB board mounting)	DA-2100005	*35.00
70.) Spring (8.0X6.0mm) (w/ 0.6mm thick wire)	IE-0000054	0.50	99.) Truck (powered)(3 axle) (w/ support post at end of truck)	DA-2100004	*35.00
71.) Washer (black) (7.0X12.0X0.6mm)	ID-0000089	0.15	100.) Truck side (black)(left rear) (Erie)(# 833)(# 832)(# 833B) (Illinois Central)(# 4025)(# 4024)(# 4104) (C&NW)(# 5029A)(# 5030A)(# 5029B)	DB-2100023	8.00
72.) Volume pot (blue) (small volume pot)	BI-0000040	5.00	100.) Truck side (silver)(left rear) (Santa Fe)(# 83)(# 84)(B unit)	DB-2100022	8.00
73.) Ladder (black) (Erie)(# 833)(# 832)(# 833B) (Illinois Central)(# 4025)(# 4024)(# 4104)	FC-2100469	3.00	101.) Truck side (black)(right rear) (Erie)(# 833)(# 832)(# 833B) (Illinois Central)(# 4025)(# 4024)(# 4104) (C&NW)(# 5029A)(# 5030A)(# 5029B)	DB-2100026	8.00
73.) Ladder (silver) (Santa Fe)(# 83)(# 84)(B unit)	FC-2100468	3.00	101.) Truck side (silver)(right rear) (Santa Fe)(# 83)(# 84)(B unit)	DB-2100025	8.00
73.) Ladder (green) (C&NW)(# 5029A)(# 5030A)(# 5029B)	FC-2100589	3.00	102.) Truck side (black)(left front) (Erie)(# 833)(# 832)(# 833B) (Illinois Central)(# 4025)(# 4024)(# 4104) (C&NW)(# 5029A)(# 5030A)(# 5029B)	DB-2100029	8.00
74.) Screw (4/40X12.0mm)(roundhead)	IA-0000264	0.15	102.) Truck side (silver)(left front) (Santa Fe)(# 83)(# 84)(B unit)	DB-2100028	8.00
75.) Bracket (Proto-Sound 2.0® board mounting)	IH-0000145	3.00	103.) Truck side (black)(right front) (Erie)(# 833)(# 832)(# 833B) (Illinois Central)(# 4025)(# 4024)(# 4104) (C&NW)(# 5029A)(# 5030A)(# 5029B)	DB-2100032	8.00
76.) Boards (Proto-Sound 2.0®)	AE-0000001	*200.00	103.) Truck side (silver)(right front) (Santa Fe)(# 83)(# 84)(B unit)	DB-2100031	8.00
77.) Tach board	AG-0000033	6.00	104.) Traction tire	DE-0000018	0.75
78.) Battery leads (195.0mm long wires)(new small 2 pin plug)	BC-0000075	5.00	105.) Insulator (pick-up)(top)	BD-0000015	2.00
79.) Battery	BG-4000001	9.95	106.) Screw (nickel) (M3X6.0mm)(roundhead)	IA-0000015	0.15
80.) Wire nut (yellow)	BI-4500003	0.25	107.) Fuel tank (black) (Erie)(# 833)(notched for volume pot) (Illinois Central)(# 4025)(notched for volume pot)	FC-2100590	*20.00
81.) Bracket (battery) (vertical mount)(plastic)	IH-0000042	3.00	107.) Fuel tank (silver) (Santa Fe)(# 83)(notched for volume pot)	FC-2100472	*20.00
82.) Bracket (metal) (10 pin PCB board mounting)	IH-0000146	3.00	107.) Fuel tank (green) (C&NW)(# 5029A)(notched for volume pot)	FC-2100591	*20.00
83.) PCB board (10 pin)	AG-0000039	8.00			
84.) Switch (large)	BB-0000006	5.00			
85.) Screw (M2X4.0mm)(roundhead)	IA-0000058	0.15			
86.) Wire strap (metal)(black)	IH-0000012	1.00			
87.) Spacer (metal)(black) (2.3X4.5X14.5mm)	ID-0000091	0.50			
88.) Screw (M2X18.0mm)(roundhead)	IA-0000095	0.15			
89.) Wire harness (145.0mm long wires) (10 pin PCB & 10 pin male plug)	BC-0000076	8.00			
90.) Coupler (non-operating) (43.6mm long)(screw base)(notched on bottom)	DD-0000036	3.00			
91.) Screw (4/40X6.0mm)(washer head)	IA-0000028	0.15			

*Requires Exchange
All parts are priced as each



E-8 A Unit (lead)

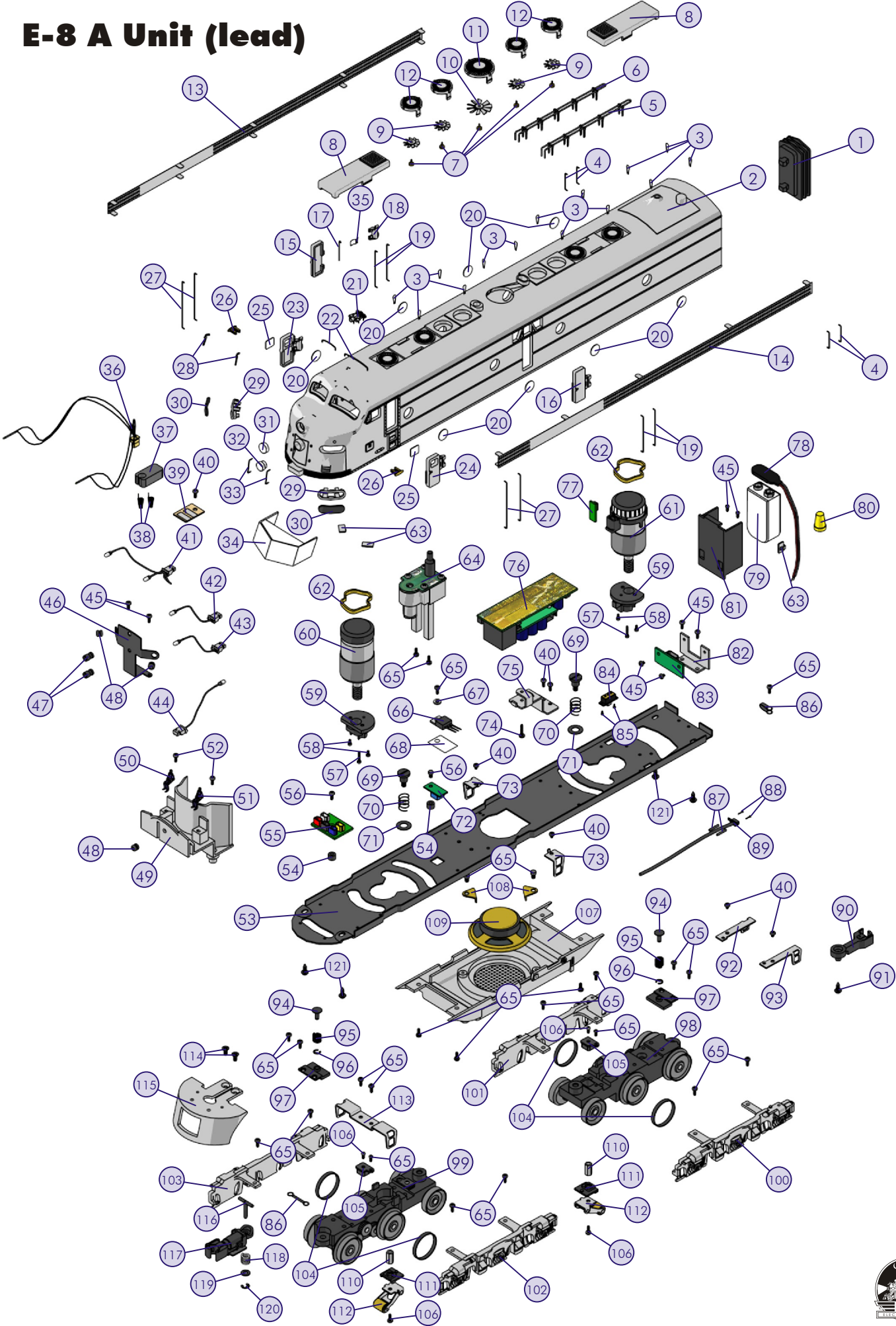
Parts

Name and Number	Part #	\$Price Per Unit
108.)Bracket (speaker) (9.5X12.0X5.4mm)	IH-0000231	1.00
109.)Speaker (Cuistack) (GF0501, 16 ohms, 0.25 watt)	BF-0000007	8.95
110.)Nut (2.5X5.0X7.0mm)	IC-0000008	0.50
111.)Insulator (pick-up)(bottom)	BD-0000024	2.00
112.)Pick-up (8.0X11.0mm roller)(28.0mm long)	BD-0000038	5.00
113.)Ladder (black) (Erie)(# 833)(# 832)(left front/right front) (Illinois Central)(# 4025)(# 4024)(left front/right front) (C&NW)(# 5029A)(# 5030A)(left front/right front)	FC-2100485	6.00
113.)Ladder (silver) (Santa Fe)(# 83)(# 84)(left front/right front)	FC-2100484	6.00
114.)Screw (4/40X6.0mm)(flathead)	IA-0000038	0.15
115.)Pilot (Erie) (dark green)(# 833)(# 832)	DG-2130019	15.00
115.)Pilot (Illinois Central) (black)(# 4025)(# 4024)	DG-2130020	15.00
115.)Pilot (Santa Fe) (silver)(# 83)(# 84)	DG-2130021	15.00
115.)Pilot (C&NW) (green)(# 5029A)(# 5030A)	DG-2130022	15.00
116.)T-bar	IG-0000001	0.50
117.)Proto-Coupler 2.0® (51.0mm long)	DD-0000032	10.00
118.)Spring (6.5X14.0mm)(w/ 0.5mm thick wire)	IE-0000022	0.50
119.)Washer (4.5X10.0X1.0mm)	ID-0000090	0.15
120.)E-clip (3.0X8.0X0.5mm)	IF-0000002	0.15
121.)Screw (M3X18.0mm)(washer head)(self-drilling)	IA-0000107	0.15

*Requires Exchange
All parts are priced as each



E-8 A Unit (lead)



E-8 B Unit

Parts

Name and Number	Part #	\$Price Per Unit	Name and Number	Part #	\$Price Per Unit
1.) Diaphragm (3 rib)	FI-0000017	2.00	11.) Fan shroud (large)	FC-2100536	6.00
2.) Shell (Erie)	FC-2100592	*100.00	(C&NW)(green)(# 5029A)(# 5030A)(#5029B)		
(# 833B)(dark & light green, yellow, black)			12.) Fan shroud (small)	FC-2100537	5.00
2.) Shell (Illinois Central)	FC-2100593	*100.00	(Erie)(dark green)(# 833)(# 832)(833B)		
(# 4104)(brown, orange, yellow, green, black)			12.) Fan shroud (small)	FC-2100538	5.00
2.) Shell (Santa Fe)	FC-2100594	*100.00	(Illinois Central)(brown)(# 4025)(# 4024)(# 4104)		
(B unit)(yellow, red, silver, black)			12.) Fan shroud (small)	FC-2100539	5.00
2.) Shell (C&NW)	FC-2100595	*100.00	(Santa Fe)(silver)(# 83)(# 84)(B unit)		
(# 5029B)(yellow, green, black, red)			12.) Fan shroud (small)	FC-2100540	5.00
3.) Lift ring (Erie)	FC-2100512	0.50	(C&NW)(green)(# 5029A)(# 5030A)(#5029B)		
(dark green)(# 833)(# 832)(# 833B)			13.) Vent (Erie)(right)	FC-2100596	9.00
3.) Lift ring (Illinois Central)	FC-2100513	0.50	(dark green)(# 833B)		
(brown)(# 4025)(# 4024)(# 4104)			13.) Vent (Illinois Central)(right)	FC-2100597	9.00
3.) Lift ring (Santa Fe)	FC-2100514	0.50	(brown)(# 4104)		
(silver)(# 83)(# 84)(B unit)			13.) Vent (Santa Fe)(right)	FC-2100598	9.00
3.) Lift ring (C&NW)	FC-2100515	0.50	(silver)(B unit)		
(green)(# 5029A)(# 5030A)(# 5029B)			13.) Vent (C&NW)(right)	FC-2100599	9.00
4.) Handrail (rear)(Erie)	FC-2100516	1.00	(green)(# 5029B)		
(18.0mm long)(dark green)(# 833)(# 832)(833B)			14.) Vent (Erie)(left)	FC-2100600	9.00
4.) Handrail (rear)(brown)	FC-2100517	1.00	(dark green)(# 833B)		
(18.0mm long)(Illinois Central)(# 4025)(# 4024)(4104)			14.) Vent (Illinois Central)(left)	FC-2100601	9.00
4.) Handrail (rear)(Santa Fe)	FC-2100518	1.00	(brown)(# 4104)		
(18.0mm long)(silver)(# 83)(# 84)(B unit)			14.) Vent (Santa Fe)(left)	FC-2100602	9.00
4.) Handrail (rear)(C&NW)	FC-2100519	1.00	(silver)(B unit)		
(18.0mm long)(green)(# 5029A)(# 5030A)(# 5029B)			14.) Vent (C&NW)(left)	FC-2100603	9.00
5.) Piping (w/ stanchions)(left)	FC-2100520	4.00	(green)(# 5029B)		
(Erie)(dark green)(# 833)(# 832)(833B)			15.) Door (right middle)	FC-2100549	6.00
5.) Piping (w/ stanchions)(left)	FC-2100521	4.00	(Erie)(dark & light green, yellow)(# 833)(# 832)(833B)		
(Illinois Central)(brown)(# 4025)(# 4024)(# 4104)			15.) Door (right middle)	FC-2100550	6.00
5.) Piping (w/ stanchions)(left)	FC-2100522	4.00	(Illinois Central)(brown, orange, yellow)		
(Santa Fe)(silver)(# 83)(# 84)(B unit)			(# 4025)(# 4024)(# 4104)		
5.) Piping (w/ stanchions)(left)	FC-2100523	4.00	15.) Door (right middle)	FC-2100551	6.00
(C&NW)(green)(# 5029A)(# 5030A)(#5029B)			(Santa Fe)(silver, black, yellow)(# 83)(# 84)(B unit)		
6.) Piping (w/ stanchions)(right)	FC-2100524	4.00	15.) Door (right middle)	FC-2100552	6.00
(Erie)(dark green)(# 833)(# 832)(833B)			(C&NW)(yellow, black)(# 5029A)(# 5030A)(# 5029B)		
6.) Piping (w/ stanchions)(right)	FC-2100525	4.00	16.) Door (left middle)	FC-2100553	6.00
(Illinois Central)(brown)(# 4025)(# 4024)(# 4104)			(Erie)(dark & light green, yellow)(# 833)(# 832)(833B)		
6.) Piping (w/ stanchions)(right)	FC-2100526	4.00	16.) Door (left middle)	FC-2100554	6.00
(Santa Fe)(silver)(# 83)(# 84)(B unit)			(Illinois Central)(brown, orange, yellow)		
6.) Piping (w/ stanchions)(right)	FC-2100527	4.00	(# 4025)(# 4024)(# 4104)		
(C&NW)(green)(# 5029A)(# 5030A)(#5029B)			16.) Door (left middle)	FC-2100555	6.00
7.) Pin (for fan)(black)	FC-2100528	1.00	(Santa Fe)(silver, black, yellow)(# 83)(# 84)(B unit)		
8.) Winterization hatch	FC-2100529	6.00	16.) Door (left middle)	FC-2100556	6.00
(Erie)(dark green)(# 833)(# 832)(833B)			(C&NW)(yellow, black)(# 5029A)(# 5030A)(# 5029B)		
8.) Winterization hatch	FC-2100530	6.00	17.) Pin (door hinge)	FC-2100365	0.25
(Illinois Central)(brown)(# 4025)(# 4024)(# 4104)			(21.3mm long)		
8.) Winterization hatch	FC-2100531	6.00	18.) Hinge (door)(plastic)	FC-2100364	1.00
(Santa Fe)(silver)(# 83)(# 84)(B unit)			19.) Handrail (Erie)	FC-2100557	1.00
8.) Winterization hatch	FC-2100532	6.00	(34.0mm long)(dark green)(# 833)(# 832)(833B)		
(C&NW)(green)(# 5029A)(# 5030A)(#5029B)			19.) Handrail (Illinois Central)	FC-2100558	1.00
9.) Fan (gray)	FC-2100407	2.00	(34.0mm long)(brown)(# 4025)(# 4024)(# 4104)		
(10 blades)(small)			19.) Handrail (Santa Fe)	FC-2100559	1.00
10.) Fan (gray)	FC-2100408	2.00	(34.0mm long)(silver)(# 83)(# 84)(B unit)		
(10 blades)(large)			19.) Handrail (C&NW)	FC-2100560	1.00
11.) Fan shroud (large)	FC-2100533	6.00	(34.0mm long)(green)(# 5029A)(# 5030A)(# 5029B)		
(Erie)(dark green)(# 833)(# 832)(833B)			20.) Lens (clear)	FA-0000066	2.00
11.) Fan shroud (large)	FC-2100534	6.00	(portal)(2.7X10.0mm)		
(Illinois Central)(brown)(# 4025)(# 4024)(# 4104)					
11.) Fan shroud (large)	FC-2100535	6.00			
(Santa Fe)(silver)(# 83)(# 84)(B unit)					

*Requires Exchange

All parts are priced as each



E-8 B Unit

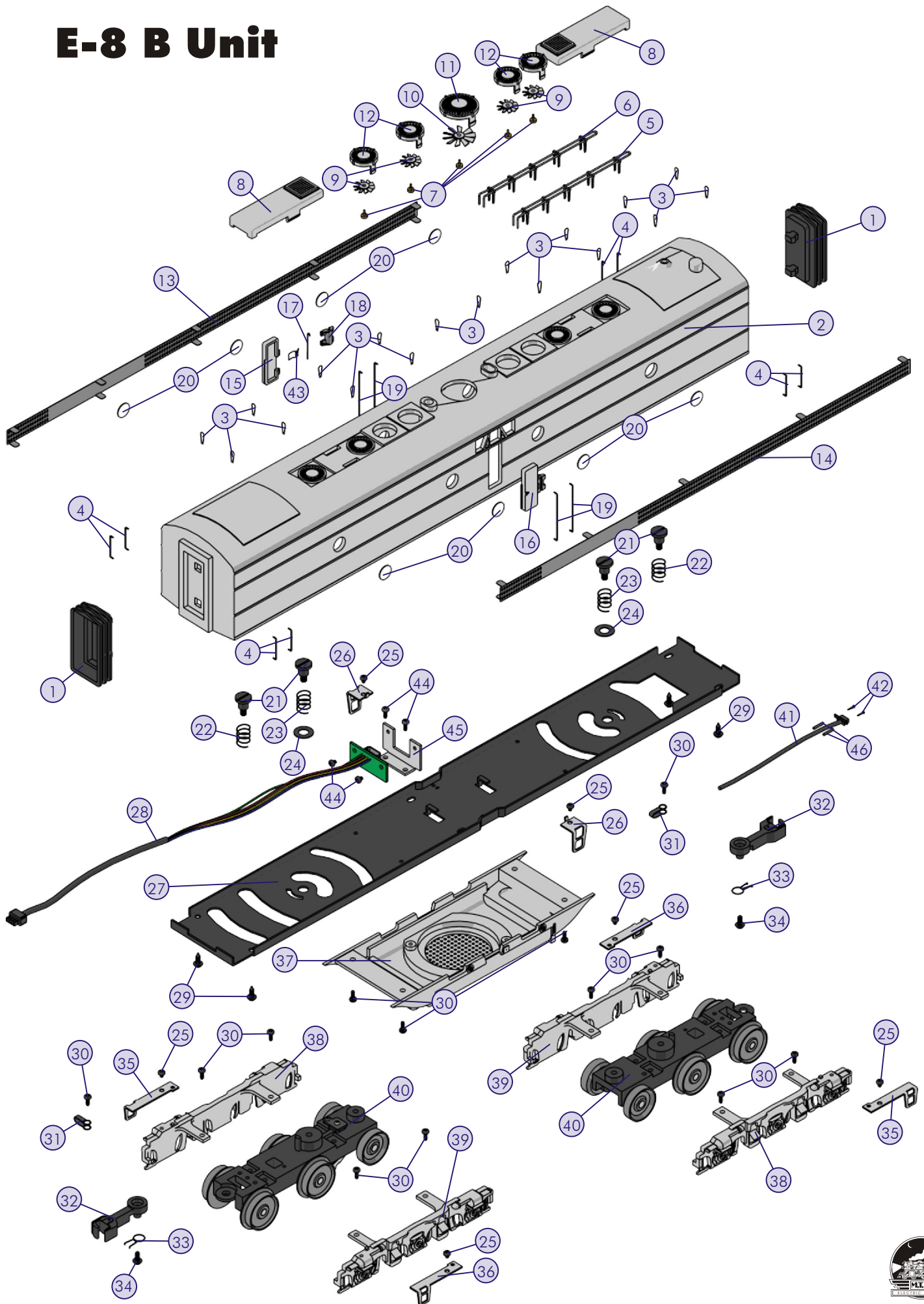
Parts

Name and Number	Part #	\$Price Per Unit	Name and Number	Part #	\$Price Per Unit
21.) Bolt (8/32X15.0mm) (6.0X8.0mm oversized shank) (1.8X10.0mm slotted head)	IA-0000088	1.00	39.) Truck side (silver)(right rear) (Santa Fe)(# 83)(# 84)(B unit)	DB-2100025	8.00
22.) Spring (8.5X12.0mm) (w/ 0.7mm thick wire)	IE-0000057	0.50	40.) Truck (non-powered) (3 axle)(w/ support post at end of truck) (tapped for PCB board)	DA-2100006	*35.00
23.) Spring (8.5X13.0mm) (w/ 0.5mm thick wire)	IE-0000058	0.50	41.) Wire harness (255.0mm long wires) (w/ 10 pin male plug and 10 pin PCB)	BC-0000077	8.00
24.) Washer (7.0X12.0X0.6mm)	ID-0000089	0.15	42.) Screw (M2X18.0mm)(roundhead)	IA-0000095	0.15
25.) Screw (4/40X4.0mm)(roundhead)	IA-0000021	0.15	43.) Spring (door)	IE-0000055	1.00
26.) Ladder (black) (Erie)(# 833)(# 832)(# 833B) (Illinois Central)(# 4025)(# 4024)(# 4104)	FC-2100469	3.00	44.) Screw (4/40X3.0mm)(roundhead)	IA-0000275	0.15
26.) Ladder (silver) (Santa Fe)(# 83)(# 84)(B unit)	FC-2100468	3.00	45.) Bracket (metal) (10 pin PCB board mounting)	IH-0000146	3.00
26.) Ladder (green) (C&NW)(# 5029A)(# 5030A)(# 5029B)	FC-2100589	3.00	46.) Spacer (metal)(black) (2.3X4.5X14.5mm)	ID-0000091	0.50
27.) Chassis (black)(B unit)	DH-2100024	*15.00			
28.) Wire harness (365.0mm long wires)(w/ 1 male 10 pin black plug) (w/ 1 10 pin PCB board)	BC-0000078	8.00			
29.) Screw (M3X18.0mm)(washer head)(self-drilling)	IA-0000107	0.15			
30.) Screw (4/40X6.0mm)(roundhead)	IA-0000003	0.15			
31.) Wire strap (metal)(black)	IH-0000012	1.00			
32.) Coupler (non-operating) (43.6mm long)(screw base)(notched on bottom)	DD-0000036	3.00			
33.) Spring (centering) (long prongs on spring)	IE-0000056	0.50			
34.) Screw (M2.5X6.0mm)(washer head)	IA-0000108	0.15			
35.) Ladder (black)(left rear) (Erie)(# 833)(# 832)(# 833B) (Illinois Central)(# 4025)(# 4024)(# 4104) (C&NW)(# 5029A)(# 5030A)(# 5029B)	FC-2100481	3.00			
35.) Ladder (silver)(left rear) (Santa Fe)(# 83)(# 84)(B unit)	FC-2100480	3.00			
36.) Ladder (black)(right rear) (Erie)(# 833)(# 832)(# 833B) (Illinois Central)(# 4025)(# 4024)(# 4104) (C&NW)(# 5029A)(# 5030A)(# 5029B)	FC-2100477	3.00			
36.) Ladder (silver)(right rear) (Santa Fe)(# 83)(# 84)(B unit)	FC-2100476	3.00			
37.) Fuel tank (black) (Erie)(# 832)(# 833B) (Illinois Central)(# 4024)(# 4104)	FC-2100604	*20.00			
37.) Fuel tank (silver) (Santa Fe)(# 84)(B unit)	FC-2100605	*20.00			
37.) Fuel tank (green) (C&NW)(# 5030A)(# 5029B)	FC-2100606	*20.00			
38.) Truck side (black)(left rear) (Erie)(# 833)(# 832)(# 833B) (Illinois Central)(# 4025)(# 4024)(# 4104) (C&NW)(# 5029A)(# 5030A)(# 5029B)	DB-2100023	8.00			
38.) Truck side (silver)(left rear) (Santa Fe)(# 83)(# 84)(B unit)	DB-2100022	8.00			
39.) Truck side (black)(right rear) (Erie)(# 833)(# 832)(# 833B) (Illinois Central)(# 4025)(# 4024)(# 4104) (C&NW)(# 5029A)(# 5030A)(# 5029B)	DB-2100026	8.00			

*Requires Exchange
All parts are priced as each



E-8 B Unit



E-8 A Unit (trailing)

Parts

Name and Number	Part #	\$Price Per Unit	Name and Number	Part #	\$Price Per Unit
1.) Diaphragm (3 rib)	FI-0000017	2.00	11.) Fan shroud (large)	FC-2100536	6.00
2.) Shell (Erie)	FC-2100508	*100.00	(C&NW)(green)(# 5029A)(# 5030A)(#5029B)		
(# 833)(# 832)(dark & light green, yellow, black)			12.) Fan shroud (small)	FC-2100537	5.00
2.) Shell (Illinois Central)	FC-2100607	*100.00	(Erie)(dark green)(# 833)(# 832)(833B)		
(# 4024)(brown, orange, yellow, green, black)			12.) Fan shroud (small)	FC-2100538	5.00
2.) Shell (Santa Fe)	FC-2100510	*100.00	(Illinois Central)(brown)(# 4025)(# 4024)(# 4104)		
(# 83)(# 84)(yellow, red, silver, black)			12.) Fan shroud (small)	FC-2100539	5.00
2.) Shell (C&NW)	FC-2100608	*100.00	(Santa Fe)(silver)(# 83)(# 84)(B unit)		
(# 5030A)(yellow, green, black, red)			12.) Fan shroud (small)	FC-2100540	5.00
3.) Lift ring (Erie)	FC-2100512	0.50	(C&NW)(green)(# 5029A)(# 5030A)(#5029B)		
(dark green)(# 833)(# 832)(# 833B)			13.) Vent (Erie)(right)	FC-2100541	9.00
3.) Lift ring (Illinois Central)	FC-2100513	0.50	(dark green)(# 833)(# 832)		
(brown)(# 4025)(# 4024)(# 4104)			13.) Vent (Illinois Central)(right)	FC-2100542	9.00
3.) Lift ring (Santa Fe)	FC-2100514	0.50	(brown)(# 4025)(# 4024)		
(silver)(# 83)(# 84)(B unit)			13.) Vent (Santa Fe)(right)	FC-2100543	9.00
3.) Lift ring (C&NW)	FC-2100515	0.50	(silver)(# 83)(# 84)		
(green)(# 5029A)(# 5030A)(# 5029B)			13.) Vent (C&NW)(right)	FC-2100544	9.00
4.) Handrail (rear)(Erie)	FC-2100516	1.00	(green)(# 5029A)(# 5030A)		
(18.0mm long)(dark green)(# 833)(# 832)(833B)			14.) Vent (Erie)(left)	FC-2100545	9.00
4.) Handrail (rear)(brown)	FC-2100517	1.00	(dark green)(# 833)(# 832)		
(18.0mm long)(Illinois Central)(# 4025)(# 4024)(4104)			14.) Vent (Illinois Central)(left)	FC-2100546	9.00
4.) Handrail (rear)(Santa Fe)	FC-2100518	1.00	(brown)(# 4025)(# 4024)		
(18.0mm long)(silver)(# 83)(# 84)(B unit)			14.) Vent (Santa Fe)(left)	FC-2100547	9.00
4.) Handrail (rear)(C&NW)	FC-2100519	1.00	(silver)(# 83)(# 84)		
(18.0mm long)(green)(# 5029A)(# 5030A)(# 5029B)			14.) Vent (C&NW)(left)	FC-2100548	9.00
5.) Piping (w/ stanchions)(left)	FC-2100520	4.00	(green)(# 5029A)(# 5030A)		
(Erie)(dark green)(# 833)(# 832)(833B)			15.) Door (right middle)	FC-2100549	6.00
5.) Piping (w/ stanchions)(left)	FC-2100521	4.00	(Erie)(dark & light green, yellow)(# 833)(# 832)(833B)		
(Illinois Central)(brown)(# 4025)(# 4024)(# 4104)			15.) Door (right middle)	FC-2100550	6.00
5.) Piping (w/ stanchions)(left)	FC-2100522	4.00	(Illinois Central)(brown, orange, yellow)		
(Santa Fe)(silver)(# 83)(# 84)(B unit)			(# 4025)(# 4024)(# 4104)		
5.) Piping (w/ stanchions)(left)	FC-2100523	4.00	15.) Door (right middle)	FC-2100551	6.00
(C&NW)(green)(# 5029A)(# 5030A)(#5029B)			(Santa Fe)(silver, black, yellow)(# 83)(# 84)(B unit)		
6.) Piping (w/ stanchions)(right)	FC-2100524	4.00	15.) Door (right middle)	FC-2100552	6.00
(Erie)(dark green)(# 833)(# 832)(833B)			(C&NW)(yellow, black)(# 5029A)(# 5030A)(# 5029B)		
6.) Piping (w/ stanchions)(right)	FC-2100525	4.00	16.) Door (left middle)	FC-2100553	6.00
(Illinois Central)(brown)(# 4025)(# 4024)(# 4104)			(Erie)(dark & light green, yellow)(# 833)(# 832)(833B)		
6.) Piping (w/ stanchions)(right)	FC-2100526	4.00	16.) Door (left middle)	FC-2100554	6.00
(Santa Fe)(silver)(# 83)(# 84)(B unit)			(Illinois Central)(brown, orange, yellow)		
6.) Piping (w/ stanchions)(right)	FC-2100527	4.00	(# 4025)(# 4024)(# 4104)		
(C&NW)(green)(# 5029A)(# 5030A)(#5029B)			16.) Door (left middle)	FC-2100555	6.00
7.) Pin (for fan)(black)	FC-2100528	1.00	(Santa Fe)(silver, black, yellow)(# 83)(# 84)(B unit)		
8.) Winterization hatch	FC-2100529	6.00	16.) Door (left middle)	FC-2100556	6.00
(Erie)(dark green)(# 833)(# 832)(833B)			(C&NW)(yellow, black)(# 5029A)(# 5030A)(# 5029B)		
8.) Winterization hatch	FC-2100530	6.00	17.) Pin (door hinge)	FC-2100365	0.25
(Illinois Central)(brown)(# 4025)(# 4024)(# 4104)			(21.3mm long)		
8.) Winterization hatch	FC-2100531	6.00	18.) Hinge (door)(plastic)	FC-2100364	1.00
(Santa Fe)(silver)(# 83)(# 84)(B unit)			19.) Handrail (Erie)	FC-2100557	1.00
8.) Winterization hatch	FC-2100532	6.00	(34.0mm long)(dark green)(# 833)(# 832)(833B)		
(C&NW)(green)(# 5029A)(# 5030A)(#5029B)			19.) Handrail (Illinois Central)	FC-2100558	1.00
9.) Fan (gray)	FC-2100407	2.00	(34.0mm long)(brown)(# 4025)(# 4024)(# 4104)		
(10 blades)(small)			19.) Handrail (Santa Fe)	FC-2100559	1.00
10.) Fan (gray)	FC-2100408	2.00	(34.0mm long)(silver)(# 83)(# 84)(B unit)		
(10 blades)(large)			19.) Handrail (C&NW)	FC-2100560	1.00
11.) Fan shroud (large)	FC-2100533	6.00	(34.0mm long)(green)(# 5029A)(# 5030A)(# 5029B)		
(Erie)(dark green)(# 833)(# 832)(833B)			20.) Lens (clear)	FA-0000066	2.00
11.) Fan shroud (large)	FC-2100534	6.00	(portal)(2.7X10.0mm)		
(Illinois Central)(brown)(# 4025)(# 4024)(# 4104)					
11.) Fan shroud (large)	FC-2100535	6.00			
(Santa Fe)(silver)(# 83)(# 84)(B unit)					

*Requires Exchange
All parts are priced as each



E-8 A Unit (trailing)

Parts

Name and Number	Part #	\$Price Per Unit
21.) Air horns (3 horns) (Erie)(dark green)(# 833)(# 832)	FC-2100561	3.00
21.) Air horns (3 horns) (Illinois Central)(brown)(# 4025)(# 4024)	FC-2100562	3.00
21.) Air horns (3 horns) (Santa Fe)(red)(# 83)(# 84)	FC-2100563	3.00
21.) Air horns (3 horns) (C&NW)(green)(# 5029A)(# 5030A)	FC-2100564	3.00
22.) Handrail (Erie) (23.0mm long)(dark green)(# 833)(# 832)	FC-2100565	1.00
22.) Handrail (Illinois Central) (23.0mm long)(brown)(# 4025)(# 4024)	FC-2100566	1.00
22.) Handrail (Santa Fe) (23.0mm long)(red)(# 83)(# 84)	FC-2100567	1.00
22.) Handrail (C&NW) (23.0mm long)(green)(# 5029A)(# 5030A)	FC-2100568	1.00
23.) Door (right front) (Erie)(dark & light green)(# 833)(# 832)	FC-2100569	6.00
23.) Door (right front) (Illinois Central)(brown)(# 4025)(# 4024)	FC-2100570	6.00
23.) Door (right front) (Santa Fe)(red)(# 83)(# 84)	FC-2100571	6.00
23.) Door (right front) (C&NW)(green, yellow)(# 5029A)(# 5030A)	FC-2100572	6.00
24.) Door (left front) (Erie)(dark & light green)(# 833)(# 832)	FC-2100573	6.00
24.) Door (left front) (Illinois Central)(brown)(# 4025)(# 4024)	FC-2100574	6.00
24.) Door (left front) (Santa Fe)(red)(# 83)(# 84)	FC-2100575	6.00
24.) Door (left front) (C&NW)(green, yellow)(# 5029A)(# 5030A)	FC-2100576	6.00
25.) Window lens (clear) (7.3X8.7X2.5mm)(door)	FA-0000067	1.00
26.) Builder's plate (EMD)	FC-2100453	3.00
27.) Handrail (Erie) (45.5mm long)(dark green)(# 833)(# 832)	FC-2100577	1.00
27.) Handrail (Illinois Central) (45.5mm long)(brown)(# 4025)(# 4024)	FC-2100578	1.00
27.) Handrail (Santa Fe) (45.5mm long)(red)(# 83)(# 84)	FC-2100579	1.00
27.) Handrail (C&NW) (45.5mm long)(green)(# 5029A)(# 5030A)	FC-2100580	1.00
28.) Windshield wipers (black)	FC-2100458	1.00
29.) Number board housing (Erie)(dark green)(# 833)(# 832)	FC-2100581	4.00
29.) Number board housing (Illinois Central)(brown)(# 4025)(# 4024)	FC-2100582	4.00
29.) Number board housing (Santa Fe)(red)(# 83)(# 84)	FC-2100583	4.00
29.) Number board housing (C&NW)(yellow)(# 5029A)(# 5030A)	FC-2100584	4.00
30.) Number board (Erie)(# 832)	FG-2100086	1.00
30.) Number board (Illinois Central)(# 4024)	FG-2100087	1.00
30.) Number board (Santa Fe)(# 84)	FG-2100088	1.00
30.) Number board (C&NW)(# 5030A)	FG-2100089	1.00

Parts

Name and Number	Part #	\$Price Per Unit
31.) Lens (mars light)(clear) (8.5mm)	FA-0000068	2.00
32.) Lens (headlight)(clear) (8.0X7.0X6.0mm)	FA-2130006	2.00
33.) Handrail (Erie) (12.5mm long)(dark green)(# 833)(# 832)	FC-2100585	1.00
33.) Handrail (Illinois Central) (12.5mm long)(brown)(# 4025)(# 4024)	FC-2100586	1.00
33.) Handrail (Santa Fe) (12.5mm long)(red)(# 83)(# 84)	FC-2100587	1.00
33.) Handrail (C&NW) (12.5mm long)(green)(# 5029A)(# 5030A)	FC-2100588	1.00
34.) Windshield	FA-0000069	6.00
35.) L.E.D.s (red)(6V) (275.0mm long wires)	CE-0000010	4.00
36.) Contact spring base	BH-0000001	2.00
37.) Contact spring	IE-0000015	0.50
38.) Contact spring board (13.0X21.0X1.0mm)	BH-0000041	2.00
39.) Screw (M3X3.0mm)(roundhead)	IA-0000296	0.15
40.) Bulbs (grain of wheat) (clear)(6V)(60.0mm long black wires)	CC-0000004	3.00
41.) Bulb (mars light) (clear)(6V)(60.0mm long white wires)	CB-0000003	3.00
42.) Bulb (grain of wheat) (clear)(6V)(60.0mm long green wires)	CA-0000034	2.00
43.) Screw (4/40X3.0mm)(roundhead)	IA-0000275	0.15
44.) Bracket (metal)(black)	IH-0000227	3.00
45.) Grommet (cupped)	IH-0000144	0.15
46.) Grommet	IH-0000010	0.15
47.) Bulb (grain of wheat) (clear)(6V)(60.0mm long black wires)	CG-0000023	2.00
48.) Screw (4/40X10.0mm)(roundhead)	IA-0000279	0.15
49.) Engineer	FI-0000001	5.00
50.) Conductor	FI-0000009	5.00
51.) Interior detail	FC-2100467	8.00
52.) Chassis (black)(A unit) (no hole cutout for speaker)	DH-2100025	*15.00
53.) Spacer (black) (3.0X6.0X4.0mm)(plastic)	ID-0000071	0.50
54.) Patch board	AG-0000038	8.00
55.) Screw (4/40X8.0mm)(roundhead)	IA-0000011	0.15
56.) Rubber band	BI-4500004	0.50
57.) Motor (RS-385PH) (8.0X24.0mm worm gear w/ 16.0mm long threads) (9.0X30.0mm flywheel)(brass)	BE-0000065	25.00
58.) Motor mount (black) (fits BE-0000065)	BI-0000048	15.00
59.) Screw (yellow zink) (M2.5X6.0mm)(roundhead w/lock washer)	IA-0000001	0.15
60.) Screw (M3X14.0mm)(roundhead)(w/ lock washer)	IA-0000012	0.15
61.) Washer (black) (7.0X12.0X0.6mm)	ID-0000089	0.15

*Requires Exchange
All parts are priced as each



E-8 A Unit (trailing)

Parts

Name and Number	Part #	\$Price Per Unit	Name and Number	Part #	\$Price Per Unit
62.) Spring (8.0X6.0mm) (w/ 0.6mm thick wire)	IE-0000054	0.50	92.) Fuel tank (black) (Erie)(# 833)(notched for volume pot) (Illinois Central)(# 4025)(notched for volume pot)	FC-2100590	*20.00
63.) Bolt (8/32X15.0mm) (6.0X8.0mm oversized shank) (1.8X10.0mm slotted head)	IA-0000088	1.00	92.) Fuel tank (silver) (Santa Fe)(# 84)(B unit)	FC-2100605	*20.00
64.) Ladder (black) (Erie)(# 833)(# 832)(# 833B) (Illinois Central)(# 4025)(# 4024)(# 4104)	FC-2100469	3.00	92.) Fuel tank (green) (C&NW)(# 5030A)(# 5029B)	FC-2100606	*20.00
64.) Ladder (silver) (Santa Fe)(# 83)(# 84)(B unit)	FC-2100468	3.00	93.) Truck side (black)(left rear) (Erie)(# 833)(# 832)(# 833B) (Illinois Central)(# 4025)(# 4024)(# 4104) (C&NW)(# 5029A)(# 5030A)(# 5029B)	DB-2100023	8.00
64.) Ladder (green) (C&NW)(# 5029A)(# 5030A)(# 5029B)	FC-2100589	3.00	93.) Truck side (silver)(left rear) (Santa Fe)(# 83)(# 84)(B unit)	DB-2100022	8.00
65.) Screw (4/40X4.0mm)(roundhead)	IA-0000021	0.15	94.) Truck side (black)(right rear) (Erie)(# 833)(# 832)(# 833B) (Illinois Central)(# 4025)(# 4024)(# 4104) (C&NW)(# 5029A)(# 5030A)(# 5029B)	DB-2100026	8.00
66.) Bracket (Proto-Sound 2.0® slave board mounting)	IH-0000148	3.00	94.) Truck side (silver)(right rear) (Santa Fe)(# 83)(# 84)(B unit)	DB-2100025	8.00
67.) Screw (4/40X6.0mm)(roundhead)	IA-0000003	0.15	95.) Truck side (black)(left front) (Erie)(# 833)(# 832)(# 833B) (Illinois Central)(# 4025)(# 4024)(# 4104) (C&NW)(# 5029A)(# 5030A)(# 5029B)	DB-2100029	8.00
68.) Insulator washer	ID-0000025	0.15	95.) Truck side (silver)(left front) (Santa Fe)(# 83)(# 84)(B unit)	DB-2100028	8.00
69.) Insulator	ID-0000024	0.15	96.) Truck side (black)(right front) (Erie)(# 833)(# 832)(# 833B) (Illinois Central)(# 4025)(# 4024)(# 4104) (C&NW)(# 5029A)(# 5030A)(# 5029B)	DB-2100032	8.00
70.) Screw (4/40X4.0mm)(roundhead)	IA-0000021	0.15	96.) Truck side (silver)(right front) (Santa Fe)(# 83)(# 84)(B unit)	DB-2100031	8.00
71.) Smoke unit (new P2.0) (20.5mm high smoke stack)	AA-0000026	50.00	97.) Screw (nickel) (M3X6.0mm)(roundhead)	IA-0000015	0.15
72.) Wire strap (metal)(white)	IH-0000103	1.00	98.) Insulator (pick-up)(top)	BD-0000015	2.00
73.) Slave board (P2.0®)	AC-0000011	*59.95	99.) Traction tire	DE-0000018	0.75
74.) Wire nut (yellow)	BI-4500003	0.25	100.) Nut (2.5X5.0X7.0mm)	IC-0000008	0.50
75.) Switch (large)	BB-0000006	5.00	101.) Insulator (pick-up)(bottom)	BD-0000024	2.00
76.) Screw (M2X4.0mm)(roundhead)	IA-0000058	0.15	102.) Pick-up (8.0X11.0mm roller)(28.0mm long)	BD-0000038	5.00
77.) Screw (M3X18.0mm)(washer head)(self-drilling)	IA-0000107	0.15	103.) Truck (powered)(3 axle) (w/ support post at end of truck) (has screw holes for PCB board mounting)	DA-2100005	*35.00
78.) Wire strap (metal)(black)	IH-0000012	1.00	104.) Ladder (black) (Erie)(# 833)(# 832)(left front/right front) (Illinois Central)(# 4025)(# 4024)(left front/right front) (C&NW)(# 5029A)(# 5030A)(left front/right front)	FC-2100485	6.00
79.) Wire harness (285.0mm long wires) (10 pin male HRS-DF3 plug & 10 pin male plug)	BC-0000079	8.00	104.) Ladder (silver) (Santa Fe)(# 83)(# 84)(left front/right front)	FC-2100484	6.00
80.) T-bar	IG-0000001	0.50	105.) Screw (4/40X6.0mm)(flathead)	IA-0000038	0.15
81.) Coupler (non-operating) (43.6mm long)(T-bar mounting base)	DD-0000037	3.00	106.) Pilot (Erie) (dark green)(# 833)(# 832)	DG-2130019	15.00
82.) Proto-Coupler 2.0® (51.0mm long)	DD-0000032	10.00	106.) Pilot (Illinois Central) (black)(# 4025)(# 4024)	DG-2130020	15.00
83.) Spring (6.5X14.0mm)(w/ 0.5mm thick wire)	IE-0000022	0.50	106.) Pilot (Santa Fe) (silver)(# 83)(# 84)	DG-2130021	15.00
84.) Washer (4.5X10.0X1.0mm)	ID-0000090	0.15	106.) Pilot (C&NW) (green)(# 5029A)(# 5030A)	DG-2130022	15.00
85.) E-clip (3.0X8.0X0.5mm)	IF-0000002	0.15	107.) Spring (door)	IE-0000055	1.00
86.) Pin (black)(9.0mm head) (3.0X9.2mm)(1 e-clip groove)	IG-0000032	1.00			
87.) Spring (6.5X6.0mm)(w/ 0.5mm thick wire)	IE-0000059	0.50			
88.) E-clip (2.5X6.0X0.5mm)	IF-0000004	0.15			
89.) Bracket (black)(metal)	IH-0000147	2.00			
90.) Ladder (black)(left rear) (Erie)(# 833)(# 832)(# 833B) (Illinois Central)(# 4025)(# 4024)(# 4104) (C&NW)(# 5029A)(# 5030A)(# 5029B)	FC-2100481	3.00			
90.) Ladder (silver)(left rear) (Santa Fe)(# 83)(# 84)(B unit)	FC-2100480	3.00			
91.) Ladder (black)(right rear) (Erie)(# 833)(# 832)(# 833B) (Illinois Central)(# 4025)(# 4024)(# 4104) (C&NW)(# 5029A)(# 5030A)(# 5029B)	FC-2100477	3.00			
91.) Ladder (silver)(right rear) (Santa Fe)(# 83)(# 84)(B unit)	FC-2100476	3.00			

*Requires Exchange

All parts are priced as each



E-8 A Unit (trailing)

